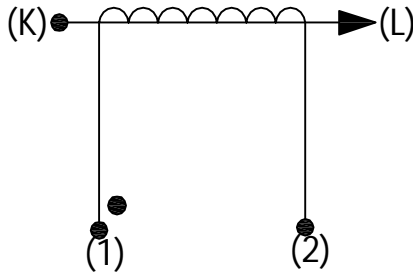


| | |
|----------------------|---------------------|
| Product Type | Current Transformer |
| AMGIS Part Number | #U |
| Customer Part Number | |
| Place of Manufacture | |

SCHEMATIC:



ELECTRICAL SPECIFICATION:

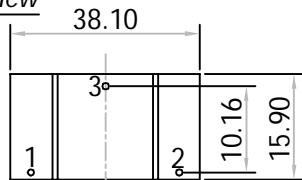
Rated input current = 75Amps
 Primary to Secondary isolation = 2500VAC
 Operating Frequency = 50 / 60 Hz
 Turns Ratio = 1 : 1000
 DC Resistance = 24.00 Ω
 Output Voltage = 7.5V @ 75A / 100Ω, 0.5700W
 I_o @ V_{rms} : 9.26V = 1520μArms
 Ratio Correction factor (RCF*) = 1.001@10% (Multiply current reading by this factor to compensate for transformer losses)

| 100Ω | 500Ω | 2000Ω | 5000Ω |
|------|------|-------|-------|
| 0.10 | 0.39 | 0.57 | 0.65 |

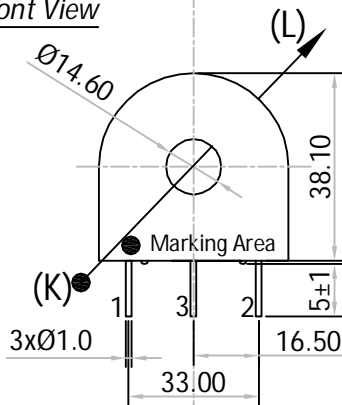
MECHANICAL SPECIFICATION :

OUTPUT RESPONSE vs INPUT CURRENT @ RATED BURDEN :

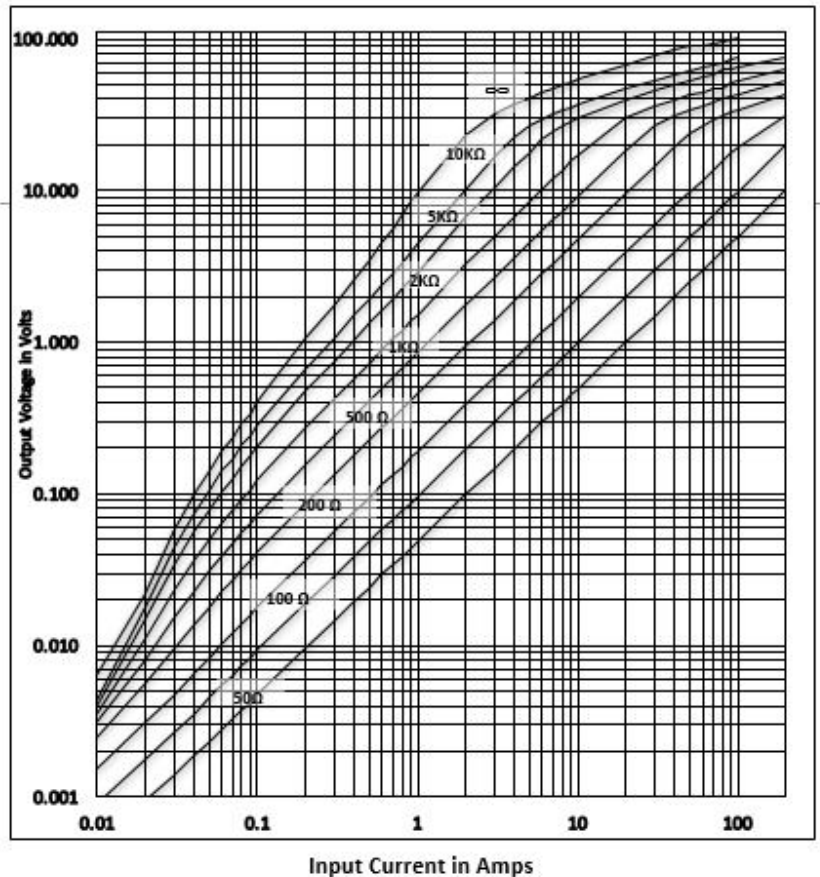
Pin Side View



Front View

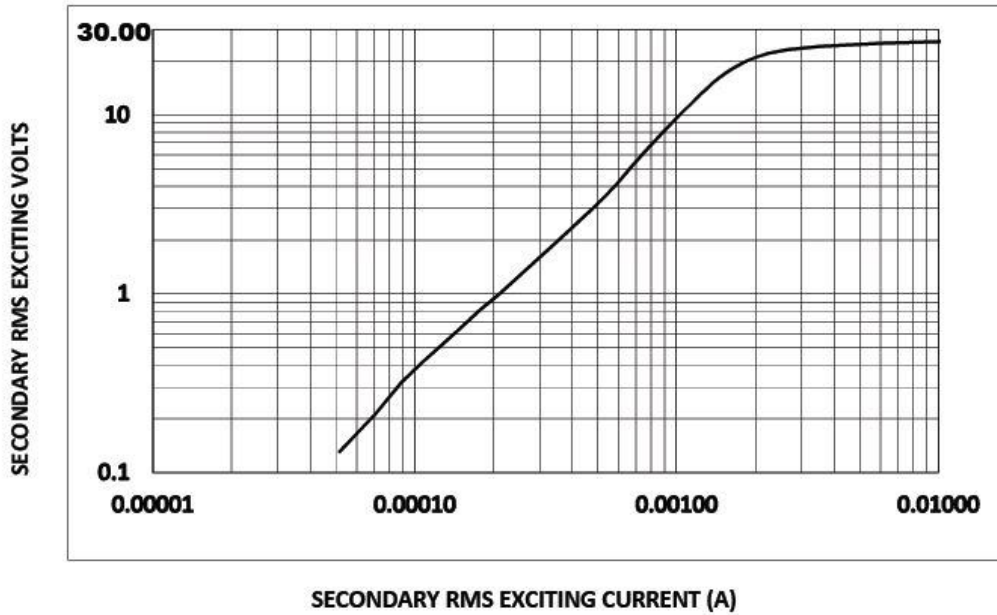


All dimensions are in mm
 Linear dimensional tolerance ±0.2mm

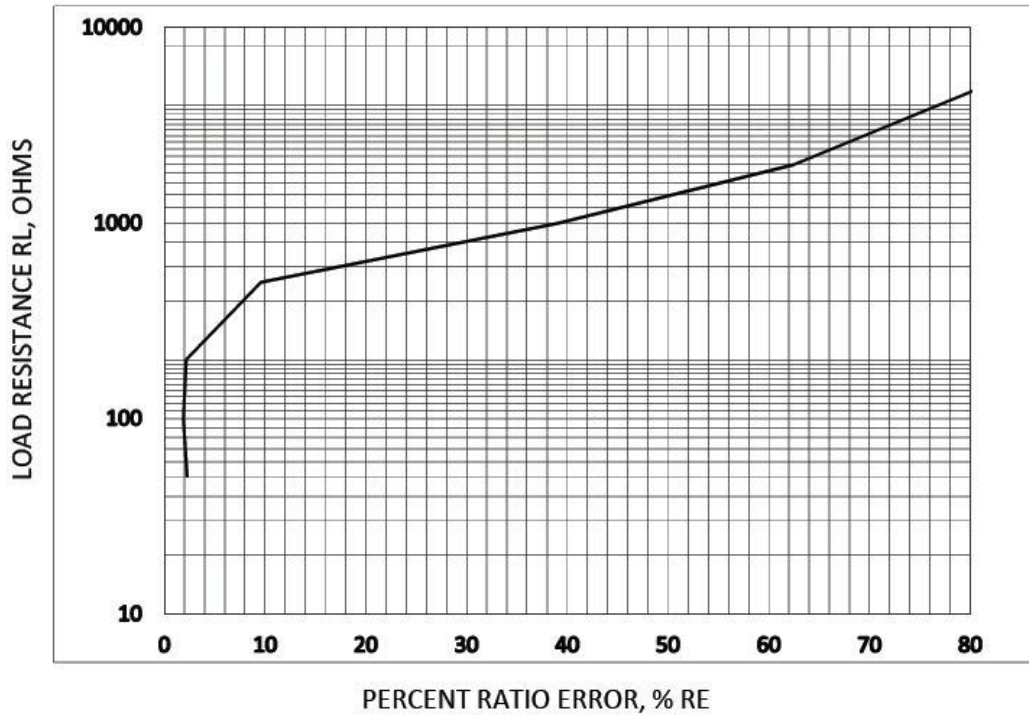


Note : Un-Used pin → #3

TYPICAL EXCITATION CURVE :



RATIO ERROR (%) vs RATED BURDEN @ INPUT CURRENT :



TRAFO WEIGHT:

Approx. Weight = 0.0652 kg / pc

MARKING INFORMATION:

L01-6219
 Ac yr / wk code
 ●
 Dot mark for Start pin identification

| | | | | |
|-------------------------|-------|-----|-----------|-------------|
| -----Initial Issue----- | 1 | 0 | Balaji. R | 18-Nov'2015 |
| Changes | Issue | Rev | Initial | Date |