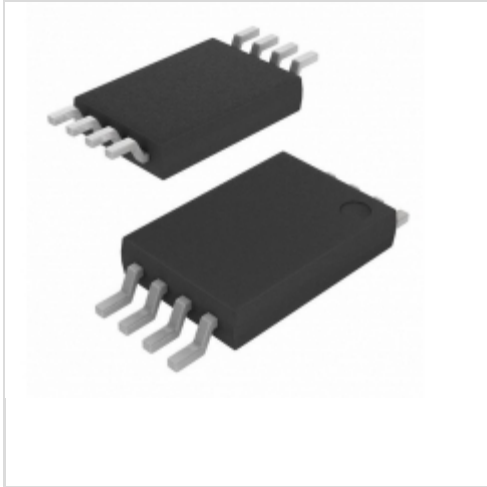


AT93C86A-10TI-1.8

Microchip Technology

IC EEPROM 16KBIT 2MHZ 8TSSOP
 Contains lead / RoHS non-compliant
 Integrated Circuits (ICs)

[AT93C86A-10TI-1.8.pdf](#)

Buy Now

We can supply Microchip Technology AT93C86A-10TI-1.8, use the request quote form to request AT93C86A-10TI-1.8 price, Microchip Technology Datasheet PDF and lead time. Zeanoit.com is a professional electronic components distributor. With 3+ Million line items of available electronic components can ship in short lead-time, over 250 thousand part numbers of electronic components in stock for immediately delivery, which may include part number AT93C86A-10TI-1.8. The price and lead time for AT93C86A-10TI-1.8 depending on the quantity required, availability and warehouse location.

Shopping Process
1
Confirm the product
2
submit the order
3
payment
4
wait for delivery
5
receive the goods
Specifications

Voltage - Supply:	1.8 V ~ 5.5 V
Supplier Device Package:	8-TSSOP
Speed:	250kHz, 1MHz, 2MHz
Series:	-
Packaging:	Tube
Package / Case:	8-TSSOP (0.173", 4.40mm Width)
Operating Temperature:	-40°C ~ 85°C (TA)
Memory Type:	Non-Volatile
Memory Size:	16Kb (2K x 8, 1K x 16)
Memory Format:	EEPROM
Interface:	Microwire, 3-Wire Serial

Related products

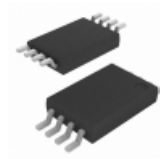

AT93C86A-10SU-2.7
 IC EEPROM 16KBIT 2MHZ 8SOIC
[Microchip Technology](#)

RFQ



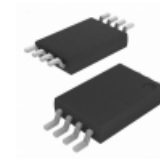
AT93C86A-SQ27
[ATMEL](#)

RFQ



AT93C86A-10TI-2.7
 IC EEPROM 16KBIT 2MHZ 8TSSOP
[Microchip Technology](#)

RFQ



AT93C86A-10TU-2.7
 IC EEPROM 16KBIT 2MHZ 8TSSOP
[Microchip Technology](#)

RFQ



AT93C86A-10SI-2.7
 IC EEPROM 16KBIT 2MHZ 8SOIC
[Microchip Technology](#)

RFQ



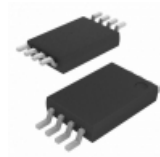
AT93C86A-10TQ-2.7
 Three-wire Automotive Temperature
 Serial EEPROM 16K (2048 x 8 or 1024 x 16)

RFQ



AT93C86A-10SQ-2.7
 Three-wire Automotive Temperature
 Serial EEPROM 16K (2048 x 8 or 1024 x 16)

RFQ



AT93C86A-10TU-1.8
 IC EEPROM 16KBIT 2MHZ 8TSSOP
[Microchip Technology](#)

RFQ



AT93C86A-10SU-1.8
 IC EEPROM 16KBIT 2MHZ 8SOIC
[Microchip Technology](#)

RFQ



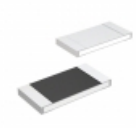
AT93C86A-10SU
[ATMEL](#)

RFQ

Guess You May Looking For

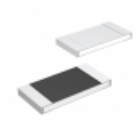

RT0805BRD076K34L
 RES SMD 6.34K OHM 0.1% 1/8W 0805
[Yageo](#)

RFQ



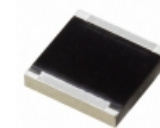
MCR18ERTF1500
 RES SMD 150 OHM 1% 1/4W 1206
[Rohm Semiconductor](#)

RFQ



MCR100JZHJ473
 RES SMD 47K OHM 5% 1W 2512
[Rohm Semiconductor](#)

RFQ



RP42525R0050GTTR
 RES SMD 50 OHM 2% 20W 2525
[AVX Corporation](#)

RFQ



RE1206DRE071K18L
 RES SMD 1.18K OHM 0.5% 1/4W 1206
[Yageo](#)

RFQ



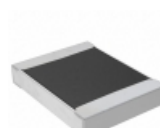
AA0402FR-072M61L
 RES SMD 2.61M OHM 1% 1/16W 0402
[Yageo](#)

RFQ



RR0816P-2803-D-44D
 RES SMD 280K OHM 0.5% 1/16W 0603
[Susumu](#)

RFQ



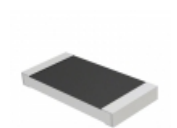
RMCF1210JT1M80
 RES SMD 1.8M OHM 5% 1/3W 1210
[Stackpole Electronics Inc.](#)

RFQ



RNCF0805DTC619K
 RES SMD 619K OHM 0.5% 1/8W 0805
[Stackpole Electronics Inc.](#)

RFQ



RMCP2010JT24R0
 RES SMD 24 OHM 5% 1W 2010
[Stackpole Electronics Inc.](#)

RFQ