

MAX6375XR26-T



Maxim Integrated

IC VOLT DETECTOR LP 2.63V SC70-3
Contains lead / RoHS non-compliant
Integrated Circuits (ICs)

- [1.MAX6375XR26-T.pdf](#)
- [2.MAX6375XR26-T.pdf](#)

Buy Now

part#MAX6375XR26-T is available, see description of MAX6375XR26-T as below . use the request quote form to request MAX6375XR26-T price and lead time. Buy Electronic Components at zeanoit.com .we are an independent distributor of electronic components with extensive inventory in stock. The price and lead time for MAX6375XR26-T depending on the quantity required, availability and warehouse location.Contact us today and our sales team will send you quotation soon.
Email: sales@zeanoit.com

Shopping Process

1

Confirm the product

2

submit the order

3

payment

4

wait for delivery

5

receive the goods

Specifications

Voltage - Threshold:	2.63V
Type:	Simple Reset/Power-On Reset
Supplier Device Package:	SC-70-3
Series:	-
Reset Timeout:	20 μs Typical Propagation Delay
Reset:	Active Low
Packaging:	Tape & Reel (TR)
Package / Case:	SC-70, SOT-323
Output:	Push-Pull, Totem Pole
Operating Temperature:	-40°C ~ 85°C (TA)
Number of Voltages Monitored:	1
Mounting Type:	Surface Mount

Related products



MAX6375XR27-T
in stock
[MAXIM](#)

RFQ



MAX6375XR28+T
IC VOLT DETECT LP 2.80V SC70-3
[Maxim Integrated](#)

RFQ



MAX6375XR26-T
in stock
[MAXIM](#)

RFQ



MAX6375XR28-T
in stock
[MAXIM](#)

RFQ



MAX6375XR29+
IC VOLT DETECT LP 2.93V SC70-3
[Maxim Integrated](#)

RFQ



MAX6375XR25-T
in stock
[MAXIM](#)

RFQ



MAX6375XR29+T
IC VOLT DETECT LP 2.93V SC70-3
[Maxim Integrated](#)

RFQ



MAX6375XR25+T
[MAXIM](#)

RFQ



MAX6375XR26+T
in stock
[MAXIM](#)

RFQ



MAX6375XR25-T
IC VOLT DETECTOR LP 2.50V SC70-3
[Maxim Integrated](#)

RFQ

Guess You May Looking For



MCR10EZP1R0
RES SMD 1 OHM 5% 1/8W 0805
[Rohm Semiconductor](#)

RFQ



RG2012N-1472-B-T1
RES SMD 14.7K OHM 0.1% 1/8W 0805
[Susumu](#)

RFQ



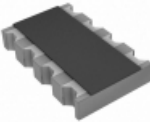
CRL1206-JW-2R70ELF
RES SMD 2.7 OHM 5% 1/4W 1206
[Bourns Inc.](#)

RFQ



4420P-2-101LF
RES ARRAY 19 RES 100 OHM 20SOIC
[Bourns Inc.](#)

RFQ



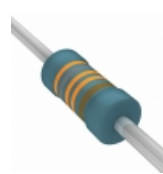
742C083334JTR
RES ARRAY 4 RES 330K OHM 1206
[CTS Resistor Products](#)

RFQ



CMF504K0200FHEB
RES 4.02K OHM 1/4W 1% AXIAL
[Vishay Dale](#)

RFQ



MRS25000C3833FCT00
RES 383K OHM 0.6W 1% AXIAL
[Vishay BC Components](#)

RFQ



CMF20270R00JNRE
RES 270 OHM 1W 5% AXIAL
[Vishay Dale](#)

RFQ



RN55C7321FRE6
RES 7.32K OHM 1/8W 1% AXIAL
[Vishay Dale](#)

RFQ



CMF55191R00DHEA
RES 191 OHM 1/2W 0.5% AXIAL
[Vishay Dale](#)

RFQ