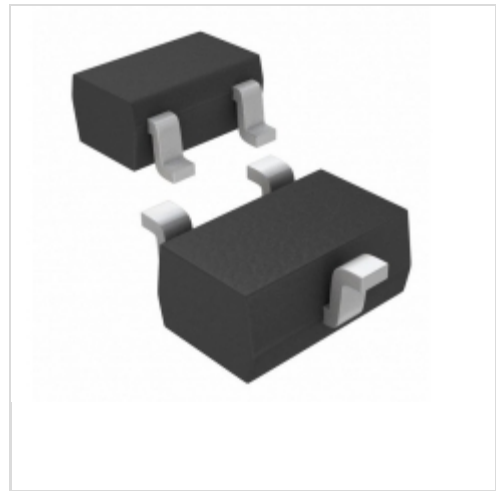


MAX6381XR39D2+T



Maxim Integrated

IC MPU/RESET CIRC 3.90V SC70-3

Lead free / RoHS Compliant

Integrated Circuits (ICs)

1.MAX6381XR39D2+T.pdf

2.MAX6381XR39D2+T.pdf

Buy Now

Out Stock

0 pcs

Minimum:1

Multiples:100

Manufacturer lead time 10 weeks

PRICE

| | |
|---------|--------|
| 1 pcs | \$5.89 |
| 10 pcs | \$5.56 |
| 25 pcs | \$4.45 |
| 50 pcs | \$4.22 |
| 100 pcs | \$3.89 |
| 250 pcs | \$3.69 |
| 500 pcs | \$2.78 |

Images are for reference only.

See Product Specifications for product details.

If you are interested to buy MAX6381XR39D2+T,Just Email us.

Sales@zeanoit.com

our sales team will reply you within 24 hours

Shopping Process

1

Confirm the product

2

submit the order

3

payment

4

wait for delivery

5

receive the goods

Specifications

| | |
|--------------------------------------|-----------------------------|
| Voltage - Threshold: | 3.9V |
| Type: | Simple Reset/Power-On Reset |
| Supplier Device Package: | SC-70-3 |
| Series: | - |
| Reset Timeout: | 20 ms Minimum |
| Reset: | Active Low |
| Packaging: | Tape & Reel (TR) |
| Package / Case: | SC-70, SOT-323 |
| Output: | Push-Pull, Totem Pole |
| Operating Temperature: | -40°C ~ 125°C (TA) |
| Number of Voltages Monitored: | 1 |
| Mounting Type: | Surface Mount |

Related products



MAX6381XR43D2+T

IC MPU/RESET CIRC 4.30V SC70-3

[Maxim Integrated](#)

RFQ



MAX6381XR31D3+T

[MAXIM](#)

RFQ

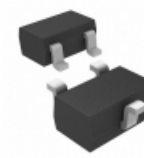


MAX6381XR31D1+T

IC MPU/RESET CIRC 3.10V SC70-3

[Maxim Integrated](#)

RFQ

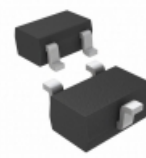


MAX6381XR44D1+T

IC MPU/RESET CIRC 4.40V SC70-3

[Maxim Integrated](#)

RFQ



MAX6381XR43D1+T

IC MPU/RESET CIRC 4.30V SC70-3

[Maxim Integrated](#)

RFQ

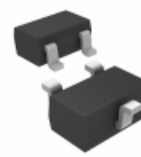


MAX6381XR31D2+T

IC MPU/RESET CIRC 3.10V SC70-3

[Maxim Integrated](#)

RFQ



MAX6381XR31D3-T

IC MPU/RESET CIRC 3.08V SC70-3

[Maxim Integrated](#)

RFQ

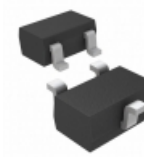


MAX6381XR30D3+T

IC MPU/RESET CIRC 3.00V SC70-3

[Maxim Integrated](#)

RFQ

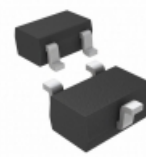


MAX6381XR44D2+T

IC MPU/RESET CIRC 4.40V SC70-3

[Maxim Integrated](#)

RFQ



MAX6381XR44D3+T

IC MPU/RESET CIRC 4.38V SC70-3

[Maxim Integrated](#)

RFQ

Guess You May Looking For



RG3216N-5601-B-T1

RES SMD 5.6K OHM 0.1% 1/4W 1206

[Susumu](#)

RFQ



AF122-FR-07634RL

RES ARRAY 2 RES 634 OHM 0404

[Yageo](#)

RFQ



766161151G

RES ARRAY 15 RES 150 OHM 16SOIC

[CTS Resistor Products](#)

RFQ



Y1735V0300FV0L

RES NETWORK 4 RES 20K OHM AXIAL

[Vishay Foil Resistors \(Division of Vishay Precisio](#)

RFQ



SQP500JB-300R

RES 300 OHM 5W 5% AXIAL

[Yageo](#)

RFQ

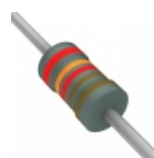


ALSR0510R00JE12

RES 10 OHM 5W 5% AXIAL

[Vishay Dale](#)

RFQ



RNF12FTD2K32

RES 2.32K OHM 1/2W 1% AXIAL

[Stackpole Electronics Inc.](#)

RFQ

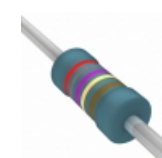


CMF552K7400FKRE

RES 2.74K OHM 1/2W 1% AXIAL

[Vishay Dale](#)

RFQ



MRS25000C2879FC100

RES 28.7 OHM 0.6W 1% AXIAL

[Vishay BC Components](#)

RFQ



RN60D2872FRE6

RES 28.7K OHM 1/4W 1% AXIAL

[Vishay Dale](#)

RFQ