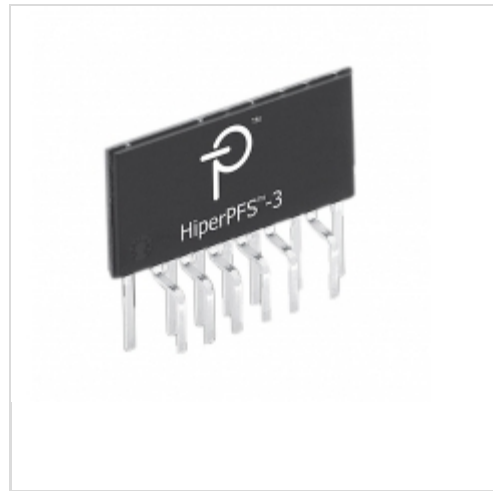


PFS725EG



Power Integrations

IC PFC CTLR 480W 180V ESIP
Lead free / RoHS Compliant
Integrated Circuits (ICs)

[PFS725EG.pdf](#)

Buy Now

We can supply Power Integrations PFS725EG, use the request quote form to request PFS725EG price, Power Integrations Datasheet PDF and lead time. Zeano.com is a professional electronic components distributor. With 3+ Million line items of available electronic components can ship in short lead-time, over 250 thousand part numbers of electronic components in stock for immediately delivery, which may include part number PFS725EG. The price and lead time for PFS725EG depending on the quantity required, availability and warehouse location.

In Stock

148 pcs

Minimum: 1

Multiples: 100

Manufacturer lead time 10 weeks

PRICE

1 pcs	\$5.73
10 pcs	\$5.115
25 pcs	\$4.604
100 pcs	\$4.194

Shopping Process

1

Confirm the product

2

submit the order

3

payment

4

wait for delivery

5

receive the goods

Specifications

Voltage - Supply:	10 V ~ 12 V
Supplier Device Package:	eSIP-7G
Series:	HiperPFS™
Packaging:	Tube
Package / Case:	7-SIP, 6 Leads, Exposed Pad, Formed Leads
Operating Temperature:	-40°C ~ 125°C
Mounting Type:	Through Hole
Mode:	Continuous Conduction (CCM)
Frequency - Switching:	24kHz ~ 95kHz
Current - Startup:	-

Related products



PFS7314V
POWER

RFQ



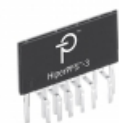
PFS716EG
IC PFC CTLR 385W 90V ESIP
[Power Integrations](#)

RFQ



PFS728EG
IC PFC CTLR 900W 180V ESIP
[Power Integrations](#)

RFQ



PFS714EG
IC PFC CTLR 385W 90V ESIP
[Power Integrations](#)

RFQ



PFS727EG
IC PFC CTLR 750W 180V ESIP
[Power Integrations](#)

RFQ



PFS713EG
HIGH POWER PFC CONTROLLER
[Power Integrations](#)

RFQ



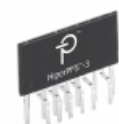
PFS726EG
IC PFC CTLR 600W 180V ESIP
[Power Integrations](#)

RFQ



PFS729EG
IC PFC CTLR 1000W 180V ESIP
[Power Integrations](#)

RFQ



PFS724EG
IC PFC CTLR 350W 180V ESIP
[Power Integrations](#)

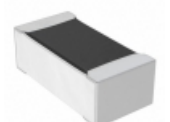
RFQ



PFS723EG
IC PFC CTLR 280W 180V ESIP
[Power Integrations](#)

RFQ

Guess You May Looking For



RN73C1E1K07BTG
RES SMD 1.07KOHM 0.1% 1/16W 0402
[TE Connectivity Passive Product](#)

RFQ



RG3216V-5621-B-T5
RES SMD 5.62K OHM 0.1% 1/4W 1206
[Susumu](#)

RFQ



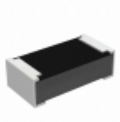
S3-2K21F8
RES SMD 2.21K OHM 1% 3W 6327
[Riedon](#)

RFQ



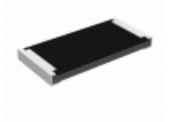
KRL3216T4-M-R010-F-T1
RES SMD 0.01 OHM 1W 1206 WIDE
[Susumu](#)

RFQ



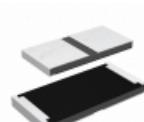
RCP0603B470RGEC
RES SMD 470 OHM 2% 3.9W 0603
[Vishay Dale](#)

RFQ



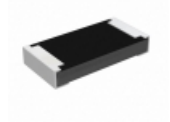
RCP2512B68R0GEB
RES SMD 68 OHM 2% 22W 2512
[Vishay Dale](#)

RFQ



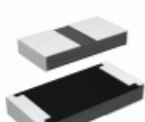
RCP2512W1K10JEB
RES SMD 1.1K OHM 5% 22W 2512
[Vishay Dale](#)

RFQ



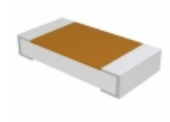
RCP1206B1K60JEC
RES SMD 1.6K OHM 5% 11W 1206
[Vishay Dale](#)

RFQ



RCP1206W13R0GEC
RES SMD 13 OHM 2% 11W 1206
[Vishay Dale](#)

RFQ



TNP1206102RAZEN00
RES SMD 102 OHM 0.05% 1/4W 1206
[Vishay Dale](#)

RFQ