

AT27LV256A-90TC



Microchip Technology

IC OTP 256KBIT 90NS 28TSOP
Contains lead / RoHS non-compliant
Integrated Circuits (ICs)

[AT27LV256A-90TC.pdf](#)

Buy Now

Images are for reference only.

See Product Specifications for product details.

If you are interested to buy AT27LV256A-90TC,Just Email us.

Sales@zeanoit.com

our sales team will reply you within 24 hours

Shopping Process

1

Confirm the product

2

submit the order

3

payment

4

wait for delivery

5

receive the goods

Specifications

Voltage - Supply:	3 V ~ 3.6 V, 4.5 V ~ 5.5 V
Supplier Device Package:	28-TSOP
Speed:	90ns
Series:	-
Packaging:	Tray
Package / Case:	28-TSSOP (0.465", 11.80mm Width)
Operating Temperature:	0°C ~ 70°C (TC)
Memory Type:	Non-Volatile
Memory Size:	256Kb (32K x 8)
Memory Format:	EPROM
Interface:	Parallel

Related products



AT27LV512-12TC
[ATMEL](#)

RFQ



AT27LV256A-90RI
IC OTP 256KBIT 90NS 28SOIC
[Microchip Technology](#)

RFQ



AT27LV256A-90RC
IC OTP 256KBIT 90NS 28SOIC
[Microchip Technology](#)

RFQ



AT27LV256A-90RU
IC OTP 256KBIT 90NS 28SOIC
[Microchip Technology](#)

RFQ



AT27LV512A
in stock
[ATMEL](#)

RFQ



AT27LV256A-90TI
IC OTP 256KBIT 90NS 28TSOP
[Microchip Technology](#)

RFQ



AT27LV256A-90TU
IC OTP 256KBIT 90NS 28TSOP
[Microchip Technology](#)

RFQ



AT27LV256A-90JU
IC OTP 256KBIT 90NS 32PLCC
[Microchip Technology](#)

RFQ



AT27LV256A_07
256K (32K x 8) Low-voltage OTP EPROM
[ATMEL](#)

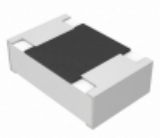
RFQ



AT27LV256A-90JU-T
90NS, PLCC, IND TEMP, GREEN
[Microchip Technology](#)

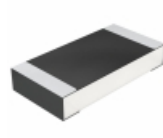
RFQ

Guess You May Looking For



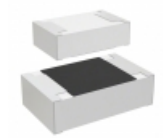
ERJ-6BQF1R5V
RES SMD 1.5 OHM 1% 1/3W 0805
[Panasonic Electronic Components](#)

RFQ



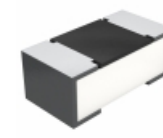
CRCW120653R6FKEA
RES SMD 53.6 OHM 1% 1/4W 1206
[Vishay Dale](#)

RFQ



CR0805-FX-6803ELF
RES SMD 680K OHM 1% 1/8W 0805
[Bourns Inc.](#)

RFQ



CRCW02013K00FNED
RES SMD 3K OHM 1% 1/20W 0201
[Vishay Dale](#)

RFQ



AT0603DRE072K8L
RES SMD 2.8K OHM 0.5% 1/10W 0603
[Yageo](#)

RFQ



KTR10EZPJ153
RES SMD 15K OHM 5% 1/8W 0805
[Rohm Semiconductor](#)

RFQ



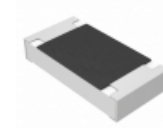
RL73N1JR10FTD
RES SMD 0.1 OHM 1% 1/10W 0603
[TE Connectivity Passive Product](#)

RFQ



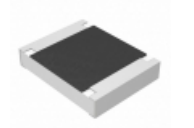
CRCW0805825RFHEAP
RES SMD 825 OHM 1% 1/8W 0805
[Vishay Dale](#)

RFQ



ERJ-S08F7320V
RES SMD 732 OHM 1% 1/4W 1206
[Panasonic Electronic Components](#)

RFQ



ERJ-S14J753U
RES SMD 75K OHM 5% 1/2W 1210
[Panasonic Electronic Components](#)

RFQ