

## LNK6418K-TL



### Power Integrations

IC LINKSWITCH CV/CC 10W 12ESOP  
Lead free / RoHS Compliant  
Integrated Circuits (ICs)

[LNK6418K-TL.pdf](#)

**Buy Now**

**Out Stock**

**0 pcs**

Minimum:1

Multiples:100

Manufacturer lead time 10 weeks

We can supply LNK6418K-TL, use the request quote form to request LNK6418K-TL price and lead time. Zeano is a professional electronic components distributor. With 3+ Million line items of available electronic components can ship in short lead-time, over 250 thousand part numbers of electronic components in stock for immediately delivery, which may include part number LNK6418K-TL. The price and lead time for LNK6418K-TL depending on the quantity required and warehouse location. Contact us and our sales representative will provide you price. We look forward to work with you.

## Shopping Process

**1**

Confirm the product

**2**

submit the order

**3**

payment

**4**

wait for delivery

**5**

receive the goods

## Specifications

<b>Voltage - Supply (Vcc/Vdd):</b>	-
<b>Voltage - Breakdown:</b>	725V
<b>Topology:</b>	Flyback
<b>Supplier Device Package:</b>	12-ESOP
<b>Series:</b>	LinkSwitch™-3
<b>Power (Watts):</b>	10W
<b>Packaging:</b>	Tape & Reel (TR)
<b>Package / Case:</b>	12-BESOP (0.350", 8.89mm Width) 11 Leads, Exposed Pad
<b>Output Isolation:</b>	Isolated
<b>Operating Temperature:</b>	-40°C ~ 150°C (TJ)
<b>Mounting Type:</b>	Surface Mount
<b>Internal Switch(s):</b>	Yes
<b>Frequency - Switching:</b>	Up to 85kHz
<b>Fault Protection:</b>	Current Limiting, Open Loop, Over Temperature, Short Circuit
<b>Duty Cycle:</b>	55%
<b>Control Features:</b>	-

## Related products



**LNK6425D**  
IC SWITCHER CV/CC 4.5W 8SOIC  
[Power Integrations](#)

RFQ



**LNK6417D-TL**  
IC LINKSWITCH CV/CC 7.5W 8SOIC  
[Power Integrations](#)

RFQ



**LNK6424D-TL**  
IC SWITCHER CV/CC 3.5W 8SOIC  
[Power Integrations](#)

RFQ



**LNK6418K**  
IC LINKSWITCH CV/CC 10W 12ESOP  
[Power Integrations](#)

RFQ



**LNK6417K**  
IC LINKSWITCH CV/CC 7.5W 12ESOP  
[Power Integrations](#)

RFQ



**LNK6424D**  
IC SWITCHER CV/CC 3.5W 8SOIC  
[Power Integrations](#)

RFQ



**LNK6417K-TL**  
IC LINKSWITCH CV/CC 7.5W 12ESOP  
[Power Integrations](#)

RFQ



**LNK6425D-TL**  
IC SWITCHER CV/CC 4.5W 8SOIC  
[Power Integrations](#)

RFQ



**LNK6418E**  
IC LINKSWITCH CV/CC 10W 7ESIP  
[Power Integrations](#)

RFQ



**LNK6426D**  
IC SWITCHER CV/CC 5.5W 8SOIC  
[Power Integrations](#)

RFQ

## Guess You May Looking For



**RNCF0805BTC1M62**  
RES SMD 1.62MOHM 0.1% 1/10W 0805  
[Stackpole Electronics Inc.](#)

RFQ



**KTR25JZPJ392**  
RES SMD 3.9K OHM 5% 1/3W 1210  
[Rohm Semiconductor](#)

RFQ



**RNCF1206DKE51R1**  
RES SMD 51.1 OHM 0.5% 1/4W 1206  
[Stackpole Electronics Inc.](#)

RFQ



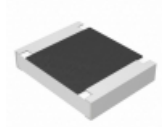
**RNCF1206BTC1K74**  
RES SMD 1.74K OHM 0.1% 1/3W 1206  
[Stackpole Electronics Inc.](#)

RFQ



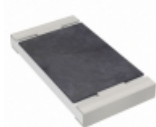
**RT0805BRE07887RL**  
RES SMD 887 OHM 0.1% 1/8W 0805  
[Yageo](#)

RFQ



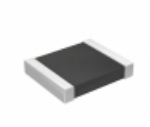
**ERJ-S14F3401U**  
RES SMD 3.4K OHM 1% 1/2W 1210  
[Panasonic Electronic Components](#)

RFQ



**AF2010JK-0720KL**  
RES SMD 20K OHM 5% 3/4W 2010  
[Yageo](#)

RFQ



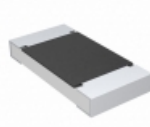
**RT1210DRD0729R4L**  
RES SMD 29.4 OHM 0.5% 1/4W 1210  
[Yageo](#)

RFQ



**AT0402CRD074K12L**  
RES SMD 4.12K OHM 1/16W 0402  
[Yageo](#)

RFQ



**CRCW2010187KFKTF**  
RES SMD 187K OHM 1% 3/4W 2010  
[Vishay Dale](#)

RFQ