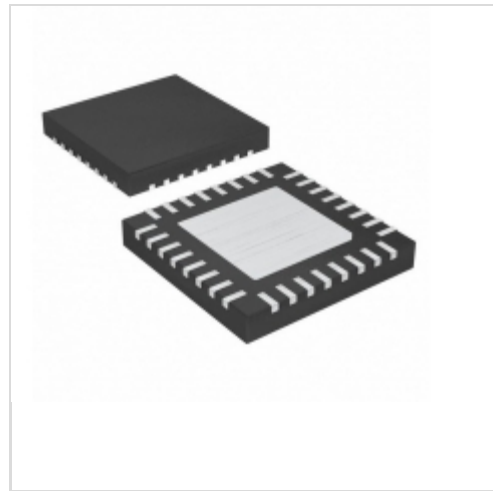


MAX3863ETJ+T



Maxim Integrated

IC LASR DRVR 2.7GBPS 3.6V 32TQFN
Lead free / RoHS Compliant
Integrated Circuits (ICs)

- [1.MAX3863ETJ+T.pdf](#)
- [2.MAX3863ETJ+T.pdf](#)

Buy Now

Images are for reference only.

See Product Specifications for product details.

If you are interested to buy MAX3863ETJ+T,Just Email us.

Sales@zeanoit.com

our sales team will reply you within 24 hours

Shopping Process

1

Confirm the product

2

submit the order

3

payment

4

wait for delivery

5

receive the goods

Specifications

Voltage - Supply:	3.15 V ~ 3.6 V
Type:	Laser Diode Driver (Fiber Optic)
Supplier Device Package:	32-TQFN-EP (5x5)
Series:	-
Packaging:	Tape & Reel (TR)
Package / Case:	32-WFQFN Exposed Pad
Operating Temperature:	-40°C ~ 85°C
Number of Channels:	1
Mounting Type:	Surface Mount
Data Rate:	2.7Gbps
Current - Supply:	58mA
Current - Modulation:	80mA
Current - Bias:	100mA

Related products



MAX3865

in stock
[MAXIM](#)

RFQ



MAX3863E/D

in stock
[MAXIM](#)

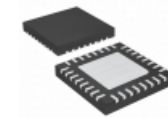
RFQ



MAX3864ESA

in stock
[MAXIM](#)

RFQ



MAX3863ETJ+

IC LASR DRVR 2.7GBPS 3.6V 32TQFN
[Maxim Integrated](#)

RFQ



MAX3863E/D*

in stock
[MAXIM](#)

RFQ



MAX3863EGJ

in stock
[MAXIM](#)

RFQ



MAX3864E/D

in stock
[MAXIM](#)

RFQ



MAX3863

in stock
[MAXIM](#)

RFQ



MAX3863EVKIT

Eval KIT MAX3863 2.7GBPS LASER D
[Maxim Integrated](#)

RFQ

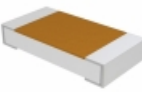


MAX3864

in stock
[MAXIM](#)

RFQ

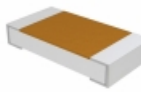
Guess You May Looking For



TNPW1206887KBEEA

RES SMD 887K OHM 0.1% 1/4W 1206
[Vishay Dale](#)

RFQ



TNPW1206412KBEEA

RES SMD 412K OHM 0.1% 1/4W 1206
[Vishay Dale](#)

RFQ



CSR1225FK12L0

RES SMD 0.012 OHM 3W 2512 WIDE
[Stackpole Electronics Inc.](#)

RFQ



RG1608N-1132-W-T5

RES SMD 11.3K OHM 1/10W 0603
[Susumu](#)

RFQ



RG1608N-2263-W-T5

RES SMD 226KOHM 0.05% 1/10W 0603
[Susumu](#)

RFQ



RG1608N-1651-W-T5

RES SMD 1.65K OHM 1/10W 0603
[Susumu](#)

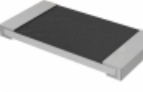
RFQ



RG1608N-7321-W-T5

RES SMD 7.32K OHM 1/10W 0603
[Susumu](#)

RFQ



RHC2512FT28R0

RES SMD 28 OHM 1% 2W 2512
[Stackpole Electronics Inc.](#)

RFQ



RG1608N-161-W-T1

RES SMD 160 OHM 0.05% 1/10W 0603
[Susumu](#)

RFQ



RG1608N-1540-W-T1

RES SMD 154 OHM 0.05% 1/10W 0603
[Susumu](#)

RFQ