

## AP1212LSL-U



[Diodes Incorporated](#)

IC PWR SWITCH USB HISIDE 8-SOIC

Lead free / RoHS Compliant

Integrated Circuits (ICs)

[AP1212LSL-U.pdf](#)

**Buy Now**

We can supply AP1212LSL-U, use the request quote form to request AP1212LSL-U price and lead time. Zeano is a professional electronic components distributor. With 3+ Million line items of available electronic components can ship in short lead-time, over 250 thousand part numbers of electronic components in stock for immediately delivery, which may include part number AP1212LSL-U. The price and lead time for AP1212LSL-U depending on the quantity required and warehouse location. Contact us and our sales representative will provide you price. We look forward to work with you.

### Shopping Process

**1**

Confirm the product

**2**

submit the order

**3**

payment

**4**

wait for delivery

**5**

receive the goods

### Specifications

<b>Voltage - Supply (Vcc/Vdd):</b>	Not Required
<b>Voltage - Load:</b>	2.7 V ~ 5.5 V
<b>Switch Type:</b>	USB Switch
<b>Supplier Device Package:</b>	8-SOP
<b>Series:</b>	-
<b>Rds On (Typ):</b>	110 mOhm
<b>Ratio - Input:Output:</b>	1:2
<b>Packaging:</b>	Tube
<b>Package / Case:</b>	8-SOIC (0.154", 3.90mm Width)
<b>Output Type:</b>	N-Channel
<b>Output Configuration:</b>	High Side
<b>Operating Temperature:</b>	-40°C ~ 125°C (TA)
<b>Number of Outputs:</b>	2
<b>Interface:</b>	On/Off
<b>Input Type:</b>	Non-Inverting
<b>Features:</b>	Status Flag
<b>Fault Protection:</b>	Current Limiting (Fixed), Over Temperature, UVLO
<b>Current - Output (Max):</b>	500mA

### Related products



**AP1212LSG-13**  
IC PWR SWITCH USB 1A 8-SOIC  
[Diodes Incorporated](#)

RFQ



**AP1231A182MR**  
[CHIPOWN](#)

RFQ



**AP1212LSL-13**  
IC PWR SWITCH USB HISIDE 8-SOIC  
[Diodes Incorporated](#)

RFQ



**AP1231B282F**  
[QQ2850920316](#)

RFQ



**AP1212HSLA**  
in stock  
[TI](#)

RFQ



**AP1212LA**  
[ANACHIP](#)

RFQ



**AP1231B152F**  
[QQ2850920316](#)

RFQ



**AP1212LSLA**  
in stock  
[TI](#)

RFQ



**AP1231B182F**  
[QQ2850920316](#)

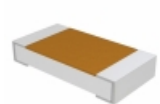
RFQ



**AP1212L**  
[ANACHIP](#)

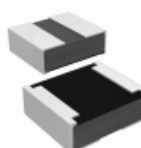
RFQ

### Guess You May Looking For



**D55342H07B511DRT5**  
RES SMD 511 OHM 1% 1/4W 1206  
[Vishay Dale](#)

RFQ



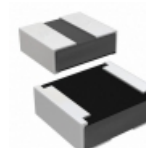
**RCP0505W39R0GEC**  
RES SMD 39 OHM 2% 5W 0505  
[Vishay Dale](#)

RFQ



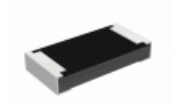
**M55342K06B19B1RT5**  
RES SMD 19.1KOHM 0.1% 0.15W 0805  
[Vishay Dale](#)

RFQ



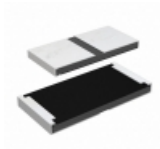
**RCP0505W16R0JS6**  
RES SMD 16 OHM 5% 5W 0505  
[Vishay Dale](#)

RFQ



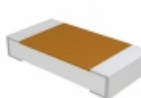
**RCP1206B13R0JED**  
RES SMD 13 OHM 5% 11W 1206  
[Vishay Dale](#)

RFQ



**RCP2512W150RJWB**  
RES SMD 150 OHM 5% 22W 2512  
[Vishay Dale](#)

RFQ



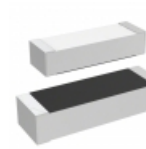
**D55342E07B62D0RWS**  
RES SMD 62 OHM 1% 1/4W 1206  
[Vishay Dale](#)

RFQ



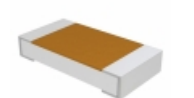
**M55342K06B2B08RWS**  
RES SMD 2.08KOHM 0.1% 0.15W 0805  
[Vishay Dale](#)

RFQ



**M55342E04B130DRWS**  
RES SMD 130 OHM 1% 0.15W 1505  
[Vishay Dale](#)

RFQ



**D55342E07B39H0RWI**  
RES SMD 39K OHM 2% 1/4W 1206  
[Vishay Dale](#)

RFQ