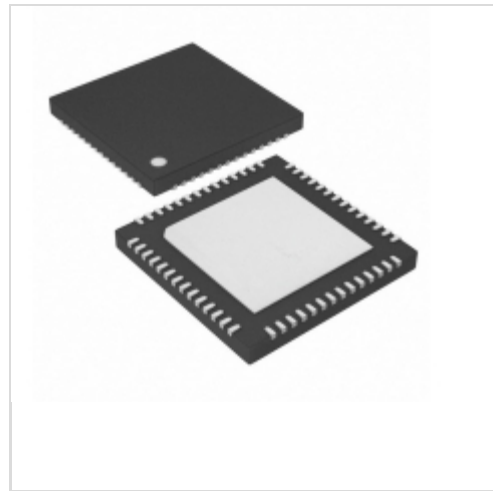


MAX5957AETN+



Maxim Integrated

IC CTRLR HOT-PLUG TRPL 56-TQFN

Lead free / RoHS Compliant

Integrated Circuits (ICs)

[1.MAX5957AETN+.pdf](#)

[2.MAX5957AETN+.pdf](#)

Buy Now

Out Stock

0 pcs

Minimum:1

Multiples:100

Manufacturer lead time 10 weeks

We can supply Maxim Integrated MAX5957AETN+, use the request quote form to request MAX5957AETN+ price, Maxim Integrated Datasheet PDF and lead time. Zeanoit.com is a professional electronic components distributor. With 3+ Million line items of available electronic components can ship in short lead-time, over 250 thousand part numbers of electronic components in stock for immediately delivery, which may include part number MAX5957AETN+. The price and lead time for MAX5957AETN+ depending on the quantity required, availability and warehouse location.

Shopping Process

1

Confirm the product

2

submit the order

3

payment

4

wait for delivery

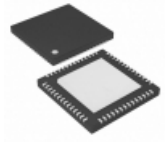
5

receive the goods

Specifications

Voltage - Supply:	3 V ~ 3.6 V, 10.8 V ~ 13.2 V
Type:	Hot Plug Controller
Supplier Device Package:	56-TQFN-EP (7x7)
Series:	-
Programmable Features:	Current Limit, Fault Timeout
Packaging:	Tube
Package / Case:	56-WFQFN Exposed Pad
Operating Temperature:	-40°C ~ 85°C
Number of Channels:	9
Mounting Type:	Surface Mount
Internal Switch(s):	Both
Features:	Auto Retry, SMBus, Thermal Limit, UVLO
Feature Pins:	-
Current - Supply:	-
Current - Output (Max):	-
Applications:	PCI Express®

Related products

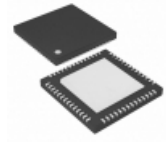


MAX5958AETN+

IC CTRLR HOT-PLUG TRPL 56-TQFN

[Maxim Integrated](#)

RFQ



MAX5957AETN+T

IC TRPL PCI EXP/HOT-PLUG 56-TQFN

[Maxim Integrated](#)

RFQ

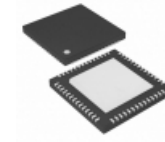


MAX5956BUEE+

IC DUAL HOT-SWAP CTRLR 16-QSOP

[Maxim Integrated](#)

RFQ



MAX5957LETN+

IC CTRLR HOT-PLUG TRPL 56-TQFN

[Maxim Integrated](#)

RFQ



MAX5956BEEE+

IC DUAL HOT-SWAP CTRLR 16-QSOP

[Maxim Integrated](#)

RFQ



MAX5959AECS+

IC CTRLR HOT-PLUG QD 80-TQFP

[Maxim Integrated](#)

RFQ



MAX5956BUEE+T

IC DUAL HOT-SWAP CTRLR 16-QSOP

[Maxim Integrated](#)

RFQ



MAX5959

in stock

[MAXIM](#)

RFQ



MAX5956AUUEE+T

IC DUAL HOT-SWAP CTRLR 16-QSOP

[Maxim Integrated](#)

RFQ



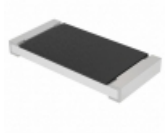
MAX5957

in stock

[MAXIM](#)

RFQ

Guess You May Looking For

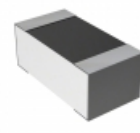


CRCW251218K7FKEGHP

RES SMD 18.7K OHM 1% 1.5W 2512

[Vishay Dale](#)

RFQ

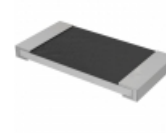


RN73C1J49K98TD

RES SMD 49.9KOHM 0.1% 1/16W 0603

[TE Connectivity Passive Product](#)

RFQ



CSR2512FT18L0

RES SMD 0.018 OHM 1% 2W 2512

[Stackpole Electronics Inc.](#)

RFQ

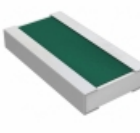


CSR1225FTR680

RES SMD 0.68 OHM 1% 3W 2512 WIDE

[Stackpole Electronics Inc.](#)

RFQ

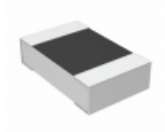


PRG3216P-1821-B-T5

RES SMD 1.82K OHM 1W 1206 WIDE

[Susumu](#)

RFQ

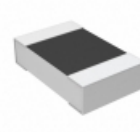


RP73D2A46R4BTDF

RES SMD 46.4 OHM 0.1% 1/8W 0805

[TE Connectivity Passive Product](#)

RFQ



RP73D2A10R5BTDF

RES SMD 10.5 OHM 0.1% 1/8W 0805

[TE Connectivity Passive Product](#)

RFQ



RG1005P-1400-W-T5

RES SMD 140 OHM 0.05% 1/16W 0402

[Susumu](#)

RFQ



HRG3216Q-18R2-D-T5

RES SMD 18.2 OHM 0.5% 1W 1206

[Susumu](#)

RFQ



HRG3216P-1301-D-T5

RES SMD 1.3K OHM 0.5% 1W 1206

[Susumu](#)

RFQ