

LTP5901IPC-IPRB1C1#PBF



Linear Technology / Analog Devices

RF TXRX MODULE 802.15.4 CHIP ANT
Lead free / RoHS Compliant
RF/IF and RFID

- 1.LTP5901IPC-IPRB1C1#PBF.pdf
- 2.LTP5901IPC-IPRB1C1#PBF.pdf

Buy Now

In Stock
39 pcs
Minimum:1
Multiples:100
Manufacturer lead time 10 weeks

Images are for reference only.

See Product Specifications for product details.

If you are interested to buy LTP5901IPC-IPRB1C1#PBF,Just Email us.

Sales@zeanoit.com

our sales team will reply you within 24 hours

Shopping Process

1

Confirm the product

2

submit the order

3

payment

4

wait for delivery

5

receive the goods

Specifications

Voltage - Supply:	2.1 V ~ 3.76 V
Series:	SmartMesh® IP
Serial Interfaces:	SPI, UART
Sensitivity:	-95dBm
RF Family/Standard:	802.15.4
Protocol:	Smartmesh IP™, 6LoWPAN
Power - Output:	8dBm
Packaging:	Tray
Package / Case:	Module
Operating Temperature:	-40°C ~ 85°C
Mounting Type:	Surface Mount
Modulation:	-
Memory Size:	512kB Flash, 72kB SRAM
Frequency:	2.4GHz
Data Rate:	250kbps
Current - Transmitting:	5.4mA ~ 9.7mA
Current - Receiving:	4.5mA
Antenna Type:	Integrated, Chip

Related products



LTP5901IPC-IPMA1D0#PBF

RF TXRX MODULE 802.15.4 CHIP ANT
[Linear Technology](#)

RFQ



LTP5901IPC-IPMA1D1#PBF

RF TXRX MODULE 802.15.4 CHIP ANT
[Linear Technology](#)

RFQ



LTP5901IPC-WHMA#PBF

RF TXRX MODULE 802.15.4 CHIP ANT
[Linear Technology](#)

RFQ



LTP5901IPC-IPRB1C2#PBF

RF TXRX MODULE 802.15.4 CHIP ANT
[Linear Technology](#)

RFQ



LTP5901IPC-WHMA1A2#PBF

RF TXRX MODULE 802.15.4 CHIP ANT
[Linear Technology](#)

RFQ



LTP5901IPC-IPRA1C1#PBF

RF TXRX MODULE 802.15.4 CHIP ANT
[Linear Technology](#)

RFQ



LTP5901IPC-IPRA1C2#PBF

RF TXRX MODULE 802.15.4 CHIP ANT
[Linear Technology](#)

RFQ



LTP5901IPC-IPRC1C1#PBF

RF TXRX MODULE 802.15.4 CHIP ANT
[Linear Technology](#)

RFQ



LTP5901IPC-IPRC1C2#PBF

RF TXRX MODULE 802.15.4 CHIP ANT
[Linear Technology](#)

RFQ



LTP5901IPC-IPMA#PBF

RF TXRX MODULE 802.15.4 CHIP ANT
[Linear Technology](#)

RFQ

Guess You May Looking For



M55342E06B221ERWS

RES SMD 221K OHM 1% 0.15W 0705
[Vishay Dale](#)

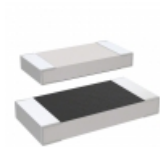
RFQ



M55342E06B52B3RWS

RES SMD 52.3KOHM 0.1% 0.15W 0805
[Vishay Dale](#)

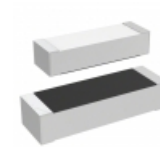
RFQ



M55342E03B229ARWS

RES SMD 229 OHM 0.1% 1/5W 1005
[Vishay Dale](#)

RFQ



M55342E04B8B45RWS

RES SMD 8.45KOHM 0.1% 0.15W 1505
[Vishay Dale](#)

RFQ



M55342E06B1B30RWS

RES SMD 1.3K OHM 0.1% 0.15W 0705
[Vishay Dale](#)

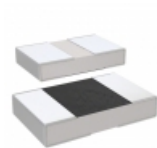
RFQ



M55342H02B150EPWS

RES SMD 150K OHM 1% 1/8W 0505
[Vishay Dale](#)

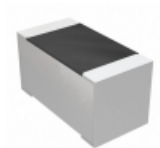
RFQ



M55342H11B100ERWS

RES SMD 100K OHM 1% 1/20W 0402
[Vishay Dale](#)

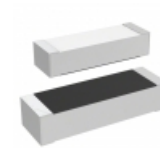
RFQ



M55342E12B9B42RT0

RES SMD 9.42KOHM 0.1% 1/10W 0603
[Vishay Dale](#)

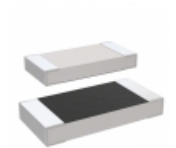
RFQ



M55342K04B3B48RWS

RES SMD 3.48KOHM 0.1% 0.15W 1505
[Vishay Dale](#)

RFQ



M55342K03B30B1RWS

RES SMD 30.1K OHM 0.1% 1/5W 1005
[Vishay Dale](#)

RFQ

