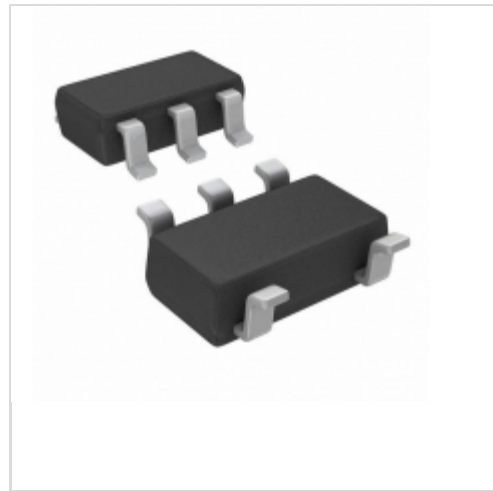


FPF2103



Fairchild/ON Semiconductor
IC SWITCH LOAD FULL FUNC SOT23-5
Lead free / RoHS Compliant
Integrated Circuits (ICs)

[FPF2103.pdf](#)

Buy Now

We can supply Fairchild/ON Semiconductor FPF2103, use the request quote form to request FPF2103 pirce, Fairchild/ON Semiconductor Datasheet PDF and lead time.Zeanoit.com is a professional electronic components distributor. With 3+ Million line items of available electronic components can ship in short lead-time, over 250 thousand part numbers of electronic components in stock for immediately delivery, which may include part number FPF2103.The price and lead time for FPF2103 depending on the quantity required, availability and warehouse location.

Out Stock
0 pcs
Minimum:1
Multiples:100
Manufacturer lead time 10 weeks

PRICE	
3000 pcs	\$0.378
6000 pcs	\$0.359
15000 pcs	\$0.346

Shopping Process

1

Confirm the product

2

submit the order

3

payment

4

wait for delivery

5

receive the goods

Specifications

Voltage - Supply (Vcc/Vdd):	Not Required
Voltage - Load:	1.8 V ~ 5.5 V
Switch Type:	General Purpose
Supplier Device Package:	SOT-23-5
Series:	IntelliMAX™
Rds On (Typ):	125 mOhm
Ratio - Input:Output:	1:1
Packaging:	Tape & Reel (TR)
Package / Case:	SC-74A, SOT-753
Output Type:	P-Channel
Output Configuration:	High Side
Operating Temperature:	-40°C ~ 85°C (TA)
Number of Outputs:	1
Interface:	On/Off
Input Type:	Non-Inverting
Features:	Status Flag
Fault Protection:	Current Limiting (Fixed), Over Temperature, UVLO
Current - Output (Max):	200mA

Related products



FPF2108
IC LOAD SWITCH ADVANCED SOT23-5
[Fairchild/ON Semiconductor](#)

RFQ



FPF2100
IC LOAD SWITCH FULL FUNC SOT23-5
[Fairchild/ON Semiconductor](#)

RFQ



FPF2104
IC SWITCH LOAD FULL FUNC SOT23-5
[Fairchild/ON Semiconductor](#)

RFQ



FPF2107
IC SWITCH LOAD FULL FUNC SOT23-5
[Fairchild/ON Semiconductor](#)

RFQ



FPF2102SB011
[FAIRCHILD](#)

RFQ



FPF2101
IC SWITCH LOAD FULL FUNC SOT23-5
[Fairchild/ON Semiconductor](#)

RFQ



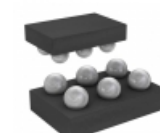
FPF2102
IC SWITCH LOAD FULL FUNC SOT23-5
[Fairchild/ON Semiconductor](#)

RFQ



FPF2106
IC SWITCH LOAD FULL FUNC SOT23-5
[Fairchild/ON Semiconductor](#)

RFQ



FPF2027
IC LOAD SWITCH 100MA 6-WLCSP
[Fairchild/ON Semiconductor](#)

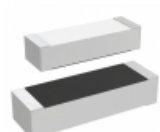
RFQ



FPF2105
IC SWITCH LOAD FULL FUNC SOT23-5
[Fairchild/ON Semiconductor](#)

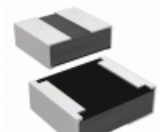
RFQ

Guess You May Looking For



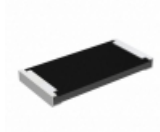
M55342E04B1E21RT5
RES SMD 1.21K OHM 1% 0.15W 1505
[Vishay Dale](#)

RFQ



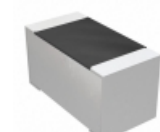
RCP0505W50R0JWB
RES SMD 50 OHM 5% 5W 0505
[Vishay Dale](#)

RFQ



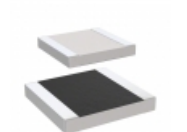
RCP2512B560RJET
RES SMD 560 OHM 5% 22W 2512
[Vishay Dale](#)

RFQ



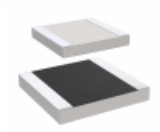
M55342E12B100JRWS
RES SMD 100 OHM 5% 1/10W 0603
[Vishay Dale](#)

RFQ



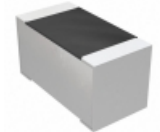
M55342H10B10E0RWS
RES SMD 10K OHM 1% 1/2W 1010
[Vishay Dale](#)

RFQ



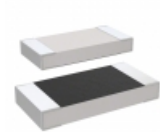
M55342H10B20E0RWS
RES SMD 20K OHM 1% 1/2W 1010
[Vishay Dale](#)

RFQ



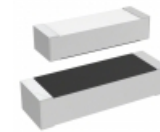
M55342H12B270MRWS
RES SMD 270 OHM 10% 1/10W 0603
[Vishay Dale](#)

RFQ



M55342K03B6B04RWS
RES SMD 6.04K OHM 0.1% 1/5W 1005
[Vishay Dale](#)

RFQ



M55342K04B2E00PT0V
RES SMD 2K OHM 1% 0.15W 1505
[Vishay Dale](#)

RFQ



Y11723K92000B9R
RES SMD 3.92KOHM 0.1% 1/10W 0805
[Vishay Foil Resistors \(Division of Vishay Preciso\)](#)

RFQ

