

BR24T128F-WE2



LAPIS Semiconductor

IC EEPROM 128KBIT 400KHZ 8SOP
Lead free / RoHS Compliant
Integrated Circuits (ICs)

[BR24T128F-WE2.pdf](#)

Buy Now

In Stock

867 pcs

Minimum:1

Multiples:100

Manufacturer lead time 10 weeks

PRICE

1 pcs	\$0.59
10 pcs	\$0.535
25 pcs	\$0.528
50 pcs	\$0.525
100 pcs	\$0.47
250 pcs	\$0.466
500 pcs	\$0.459
1000 pcs	\$0.442

Images are for reference only.

See Product Specifications for product details.

If you are interested to buy BR24T128F-WE2,Just Email us.

Sales@zeanoit.com

our sales team will reply you within 24 hours

Shopping Process

1

Confirm the product

2

submit the order

3

payment

4

wait for delivery

5

receive the goods

Specifications

Voltage - Supply:	1.6 V ~ 5.5 V
Supplier Device Package:	8-SOP
Speed:	400kHz
Series:	-
Packaging:	Original-Reel®
Package / Case:	8-SOIC (0.173", 4.40mm Width)
Operating Temperature:	-40°C ~ 85°C (TA)
Memory Type:	Non-Volatile
Memory Size:	128Kb (16K x 8)
Memory Format:	EEPROM
Interface:	I ² C, 2-Wire Serial

Related products



BR24T128FJ-WGE2
ROHM

RFQ



BR24T128FU-WE2
ROHM

RFQ



BR24T128-W
IC EEPROM 128KBIT 400KHZ 8DIP
Rohm Semiconductor

RFQ



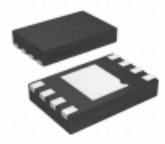
BR24T128FV-WE2
IC EEPROM 128KBIT 400KHZ 8SSOPB
Rohm Semiconductor

RFQ



BR24T08FVM-WTR
IC EEPROM 8KBIT 400KHZ 8MSOP
Rohm Semiconductor

RFQ



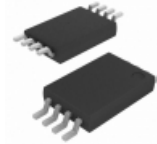
BR24T08NUX-WTR
IC EEPROM 8KBIT 400KHZ 8VSON
Rohm Semiconductor

RFQ



BR24T08NUX-WGTR
ROHM

RFQ



BR24T08FVT-WE2
IC EEPROM 8KBIT 400KHZ 8TSSOP-B
Rohm Semiconductor

RFQ



BR24T128FVJ-WE2
IC EEPROM 128K 400KHZ 8TSSOP-BJ
Rohm Semiconductor

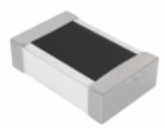
RFQ



BR24T128FJ-WE2
IC EEPROM 128KBIT 400KHZ 8SOP-J
Rohm Semiconductor

RFQ

Guess You May Looking For



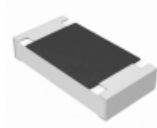
UCR10EVHJSR022
RES SMD 0.022 OHM 5% 1/3W 0805
Rohm Semiconductor

RFQ



CR0603-JW-330ELF
RES SMD 33 OHM 5% 1/10W 0603
Boums Inc.

RFQ



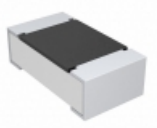
ERJ-L08UJ63MV
RES SMD 0.063 OHM 5% 1/3W 1206
Panasonic Electronic Components

RFQ



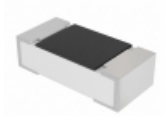
AA1206FR-07499RL
RES SMD 499 OHM 1% 1/4W 1206
Yageo

RFQ



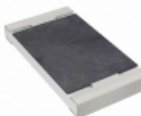
CRCW0603294RFKTA
RES SMD 294 OHM 1% 1/10W 0603
Vishay Dale

RFQ



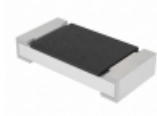
CRCW04021R65FKEDHP
RES SMD 1.65 OHM 1% 1/5W 0402
Vishay Dale

RFQ



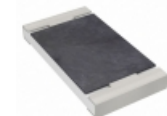
RC2010FK-0775RL
RES SMD 75 OHM 1% 3/4W 2010
Yageo

RFQ



CRCW1206120KJNEAHP
RES SMD 120K OHM 5% 3/4W 1206
Vishay Dale

RFQ



RT2010FKE0754K9L
RES SMD 54.9K OHM 1% 1/2W 2010
Yageo

RFQ



AT1206DRD071K69L
RES SMD 1.69K OHM 0.5% 1/4W 1206
Yageo

RFQ