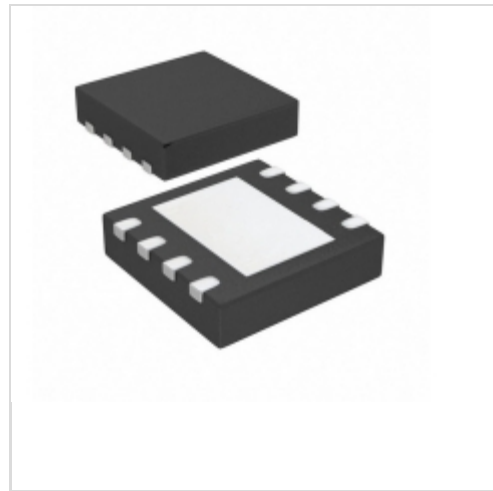


**MTCH810T-I/MF**


**Microchip Technology**  
 IC HAPTICS DRIVER 1CH 8DFN  
 Lead free / RoHS Compliant  
 Integrated Circuits (ICs)

- [1.MTCH810T-I/MF.pdf](#)
- [2.MTCH810T-I/MF.pdf](#)

**Buy Now**

**Out Stock**  
**0 pcs**  
 Minimum:1  
 Multiples:100  
 Manufacturer lead time 10 weeks

part#MTCH810T-I/MF is available, see description of MTCH810T-I/MF as below .  
 use the request quote form to request MTCH810T-I/MF price and lead time.  
 Buy Electronic Components at zeanoit.com .we are an independent distributor of  
 electronic components with extensive inventory in stock.  
 The price and lead time for MTCH810T-I/MF depending on the quantity required,  
 availability and warehouse location.Contact us today and our sales team will send you  
 quotation soon.  
 Email: sales@zeanoit.com

**Shopping Process**
**1**
**Confirm the product**
**2**
**submit the order**
**3**
**payment**
**4**
**wait for delivery**
**5**
**receive the goods**
**Specifications**

<b>Voltage - Supply:</b>	2.3 V ~ 5.5 V
<b>Voltage - Load:</b>	-
<b>Technology:</b>	-
<b>Supplier Device Package:</b>	8-DFN (3x3)
<b>Step Resolution:</b>	-
<b>Series:</b>	-
<b>Packaging:</b>	Tape & Reel (TR)
<b>Package / Case:</b>	8-VDFN Exposed Pad
<b>Output Configuration:</b>	Differential
<b>Operating Temperature:</b>	-40°C ~ 85°C (TA)
<b>Mounting Type:</b>	Surface Mount
<b>Motor Type - Stepper:</b>	-
<b>Motor Type - AC, DC:</b>	ERM
<b>Interface:</b>	I <sup>2</sup> C
<b>Function:</b>	Controller - Commutation, Direction Management
<b>Current - Output:</b>	-
<b>Applications:</b>	Haptic Feedback

**Related products**


**MTCMR-C1-N3**  
 MODEM CELLULAR DUAL CDMA  
[Multi-Tech Systems Inc.](#)

**RFQ**

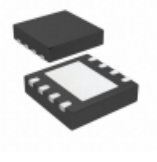

**MTCMR-C1-N2-NAM**  
 MODEM CELLULAR DUAL CDMA  
[Multi-Tech Systems Inc.](#)

**RFQ**

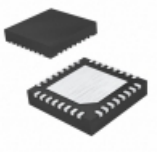

**MTCMR-C1-GP-N3**  
 MODEM CELLULAR DUAL CDMA  
[Multi-Tech Systems Inc.](#)

**RFQ**

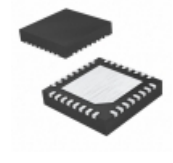

**MTCH652-I/SS**  
 IC TOUCH CTRLR  
[Microchip Technology](#)

**RFQ**


**MTCH810-I/MF**  
 IC HAPTICS DRIVER 1CH 8DFN  
[Microchip Technology](#)

**RFQ**


**MTCH652-I/MV**  
 IC TOUCH CTRLR  
[Microchip Technology](#)

**RFQ**


**MTCH652T-I/MV**  
 IC TOUCH CTRLR  
[Microchip Technology](#)

**RFQ**


**MTCMR-C1-N2**  
 MODEM CELLULAR DUAL CDMA  
[Multi-Tech Systems Inc.](#)

**RFQ**


**MTCMR-C1-GP-N2**  
 MODEM CELLULAR DUAL CDMA  
[Multi-Tech Systems Inc.](#)

**RFQ**


**MTCH652T-I/SS**  
 IC TOUCH CTRLR  
[Microchip Technology](#)

**RFQ**
**Guess You May Looking For**

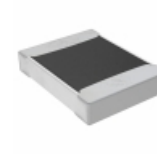

**PHP00805H6651BST1**  
 RES SMD 6.65K OHM 0.1% 5/8W 0805  
[Vishay Thin Film](#)

**RFQ**

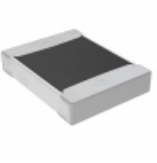

**RG1005V-6190-D-T10**  
 RES SMD 619 OHM 0.5% 1/16W 0402  
[Susumu](#)

**RFQ**


**SM6227FT50L0**  
 RES SMD 0.05 OHM 1% 3W 6227  
[Stackpole Electronics Inc.](#)

**RFQ**


**TNPW1210430RBEEN**  
 RES SMD 430 OHM 0.1% 1/3W 1210  
[Vishay Dale](#)

**RFQ**


**TNPW121018K0BEEN**  
 RES SMD 18K OHM 0.1% 1/3W 1210  
[Vishay Dale](#)

**RFQ**

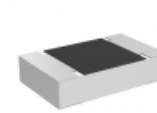

**RP73D1J110KBTG**  
 RES SMD 110K OHM 0.1% 1/10W 0603  
[TE Connectivity Passive Product](#)

**RFQ**


**RG2012V-3480-B-T5**  
 RES SMD 348 OHM 0.1% 1/8W 0805  
[Susumu](#)

**RFQ**


**RG3216V-1781-D-T5**  
 RES SMD 1.78K OHM 0.5% 1/4W 1206  
[Susumu](#)

**RFQ**


**TNPU08051K58BZEN00**  
 RES SMD 1.58K OHM 0.1% 1/8W 0805  
[Vishay Dale](#)

**RFQ**


**RCP0505W1K20JS3**  
 RES SMD 1.2K OHM 5% 5W 0505  
[Vishay Dale](#)

**RFQ**

