

MAX2206EBS+T10G45



[Maxim Integrated](#)

IC RF POWER DETECTOR UCSP

Lead free / RoHS Compliant

RF/IF and RFID

[MAX2206EBS+T10G45.pdf](#)

Buy Now

We can supply Maxim Integrated MAX2206EBS+T10G45, use the request quote form to request MAX2206EBS+T10G45 price, Maxim Integrated Datasheet PDF and lead time. Zeanoit.com is a professional electronic components distributor. With 3+ Million line items of available electronic components can ship in short lead-time, over 250 thousand part numbers of electronic components in stock for immediately delivery, which may include part number MAX2206EBS+T10G45. The price and lead time for MAX2206EBS+T10G45 depending on the quantity required, availability and warehouse location.

Shopping Process

1

Confirm the product

2

submit the order

3

payment

4

wait for delivery

5

receive the goods

Specifications

Voltage - Supply:	2.7 V ~ 5 V
Series:	-
RF Type:	Cellular, GSM, EDGE
Packaging:	Tape & Reel (TR)
Package / Case:	4-WFBGA, CSPBGA
Input Range:	-25dB ~ 15dB
Frequency:	800MHz ~ 2GHz
Current - Supply:	3.5mA
Accuracy:	±0.3dB

Related products



MAX2206EBS

in stock
[MAXIM](#)

RFQ



MAX2206EBS-T

IC RF POWER DETECTOR 4-UCSP
[Maxim Integrated](#)

RFQ



MAX2206EBS-T10

in stock
[MAXIM](#)

RFQ



MAX2207EBS

in stock
[MAXIM](#)

RFQ



MAX2206EBS-T

in stock
[MAXIM](#)

RFQ



MAX2206EBS+

[MAXIM](#)

RFQ



MAX2206EBS+T10

IC RF POWER DETECTOR UCSP
[Maxim Integrated](#)

RFQ



MAX2205EVKIT+

KIT EVAL FOR MAX2205
[Maxim Integrated](#)

RFQ



MAX2206EBS+T

[MAXIM](#)

RFQ

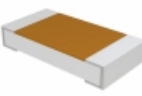


MAX2206EVKIT

EVAL KIT
[Maxim Integrated](#)

RFQ

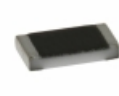
Guess You May Looking For



TNPW1206107KBEEN

RES SMD 107K OHM 0.1% 1/4W 1206
[Vishay Dale](#)

RFQ



TNPW0805330RBEEN

RES SMD 330 OHM 0.1% 1/8W 0805
[Vishay Dale](#)

RFQ



PAT0805E1870BST1

RES SMD 187 OHM 0.1% 1/5W 0805
[Vishay Thin Film](#)

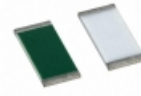
RFQ



PAT0805E2212BST1

RES SMD 22.1K OHM 0.1% 1/5W 0805
[Vishay Thin Film](#)

RFQ



PAT0805E2871BST1

RES SMD 2.87K OHM 0.1% 1/5W 0805
[Vishay Thin Film](#)

RFQ



PAT0805E4372BST1

RES SMD 43.7K OHM 0.1% 1/5W 0805
[Vishay Thin Film](#)

RFQ



PAT0805E69R8BST1

RES SMD 69.8 OHM 0.1% 1/5W 0805
[Vishay Thin Film](#)

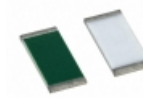
RFQ



PAT0805E5420BST1

RES SMD 542 OHM 0.1% 1/5W 0805
[Vishay Thin Film](#)

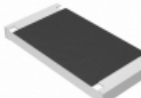
RFQ



PAT0805E5491BST1

RES SMD 5.49K OHM 0.1% 1/5W 0805
[Vishay Thin Film](#)

RFQ



ERJ-A1BJR39U

RES SMD 0.39 OHM 1.33W 2512 WIDE
[Panasonic Electronic Components](#)

RFQ