

**SBR8E20P5-7D**



**Diodes Incorporated**  
 DIODE SBR 20V 8A POWERDI5  
 Lead free / RoHS Compliant  
 Discrete Semiconductor Products

[SBR8E20P5-7D.pdf](#)

**Buy Now**

**Out Stock**  
**0 pcs**  
 Minimum:1  
 Multiples:100  
 Manufacturer lead time 10 weeks

Images are for reference only.  
 See Product Specifications for product details.  
 If you are interested to buy SBR8E20P5-7D,Just Email us.  
 Sales@zeanoit.com  
 our sales team will reply you within 24 hours

Shopping Process

**1**

Confirm the product

**2**

submit the order

**3**

payment

**4**

wait for delivery

**5**

receive the goods

Specifications

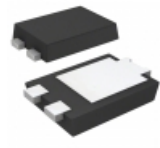
<b>Voltage - Forward (Vf) (Max) @ If:</b>	450mV @ 8A
<b>Voltage - DC Reverse (Vr) (Max):</b>	20V
<b>Supplier Device Package:</b>	PowerDI@5
<b>Speed:</b>	Standard Recovery >500ns, > 200mA (Io)
<b>Series:</b>	-
<b>Packaging:</b>	Tape & Reel (TR)
<b>Package / Case:</b>	PowerDI™ 5
<b>Operating Temperature - Junction:</b>	-55°C ~ 150°C
<b>Mounting Type:</b>	Surface Mount
<b>Diode Type:</b>	Super Barrier
<b>Current - Reverse Leakage @ Vr:</b>	500µA @ 20V
<b>Current - Average Rectified (Io):</b>	8A
<b>Capacitance @ Vr, F:</b>	-

Related products



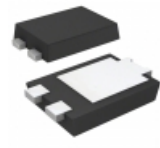
**SBR8E20P5-13**  
 DIODE SBR 20V 8A POWERDI5  
[Diodes Incorporated](#)

RFQ



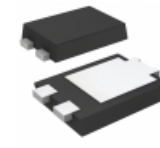
**SBR8E45P5-13D**  
 DIODE RECT SBR 45V 5A POWERDI5  
[Diodes Incorporated](#)

RFQ



**SBR8E45P5-7D**  
 DIODE RECT SBR 45V 8A POWERDI5  
[Diodes Incorporated](#)

RFQ



**SBR8E20P5-13D**  
 DIODE SBR 20V 8A POWERDI5  
[Diodes Incorporated](#)

RFQ



**SBR8E45P5-7**  
 DIODE RECT SBR 45V 8A POWERDI5  
[Diodes Incorporated](#)

RFQ



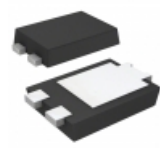
**SBR8E20P5-7**  
 DIODE SBR 20V 8A POWERDI5  
[Diodes Incorporated](#)

RFQ



**SBR8B60P5-7D**  
 DIODE SBR 60V 5A POWERDI5  
[Diodes Incorporated](#)

RFQ



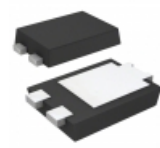
**SBR8B60P5-7**  
 DIODE SBR 60V 5A POWERDI5  
[Diodes Incorporated](#)

RFQ



**SBR8E45P5-13**  
 DIODE RECT SBR 45V 5A POWERDI5  
[Diodes Incorporated](#)

RFQ



**SBR8E60P5-13**  
 DIODE ARRY SBR 60V 8A POWERDI5  
[Diodes Incorporated](#)

RFQ

Guess You May Looking For



**SIT1602BC-73-25S-8.192000E**  
 -20 TO 70C, 2016, 50PPM, 2.5V, 8  
[SITIME](#)

RFQ



**SIT1602BC-33-25S-6.000000Y**  
 -20 TO 70C, 5032, 50PPM, 2.5V, 6  
[SITIME](#)

RFQ



**SIT1602BC-33-28S-6.000000Y**  
 -20 TO 70C, 5032, 50PPM, 2.8V, 6  
[SITIME](#)

RFQ



**SIT1602BC-72-33S-72.000000E**  
 -20 TO 70C, 2016, 25PPM, 3.3V, 7  
[SITIME](#)

RFQ



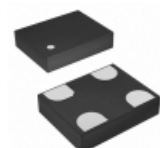
**SIT1602BI-71-25N-38.000000E**  
 -40 TO 85C, 2016, 20PPM, 2.5V, 3  
[SITIME](#)

RFQ



**SIT1602BC-22-18N-62.500000E**  
 -20 TO 70C, 3225, 25PPM, 1.8V, 6  
[SITIME](#)

RFQ



**SIT1602BI-21-18N-77.760000E**  
 -40 TO 85C, 3225, 20PPM, 1.8V, 7  
[SITIME](#)

RFQ



**SIT8008AI-22-33E-33.000000D**  
 OSC MEMS 33.0000MHZ LVCMOS SMD  
[SITIME](#)

RFQ



**TB-66.667MBE-T**  
 OSC MEMS 66.667MHZ CMOS SMD  
[TXC CORPORATION](#)

RFQ



**SIT1602BC-71-25S-14.000000G**  
 -20 TO 70C, 2016, 20PPM, 2.5V, 1  
[SITIME](#)

RFQ