

## HMC136



**ADI (Analog Devices, Inc.)**

IC BI-PHASE MODULATOR DIE

Lead free / RoHS Compliant

RF/IF and RFID

[HMC136.pdf](#)

**Buy Now**

We can supply ADI (Analog Devices, Inc.) HMC136, use the request quote form to request HMC136 price, ADI (Analog Devices, Inc.) Datasheet PDF and lead time. Zeanoit.com is a professional electronic components distributor. With 3+ Million line items of available electronic components can ship in short lead-time, over 250 thousand part numbers of electronic components in stock for immediately delivery, which may include part number HMC136. The price and lead time for HMC136 depending on the quantity required, availability and warehouse location.

### Shopping Process

**1**

Confirm the product

**2**

submit the order

**3**

payment

**4**

wait for delivery

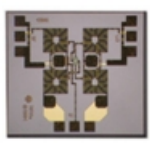
**5**

receive the goods

### Specifications

<b>Voltage - Supply:</b>	-
<b>Test Frequency:</b>	4GHz ~ 8GHz
<b>Series:</b>	-
<b>RF Frequency:</b>	4GHz ~ 8GHz
<b>Packaging:</b>	Bulk
<b>Package / Case:</b>	Die
<b>P1dB:</b>	8dBm
<b>Output Power:</b>	-
<b>LO Frequency:</b>	-
<b>Function:</b>	Modulator
<b>Current - Supply:</b>	5mA

### Related products



**HMC130**  
IC MMIC MIXER DBL-BAL DIE  
[Analog Devices Inc.](#)

RFQ



**HMC12DTES**  
CONN EDGE DUAL FEMALE 24POS 0.100  
[Sullins Connector Solutions](#)

RFQ



**HMC13DRAI-S734**  
CONN EDGE DUAL FEMALE 26POS 0.100  
[Sullins Connector Solutions](#)

RFQ



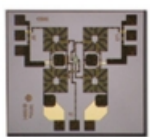
**HMC135**  
IC BI-PHASE MODULATOR DIE  
[Analog Devices Inc.](#)

RFQ



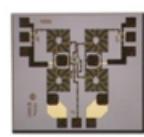
**HMC13DRAI**  
CONN EDGE DUAL FEMALE 26POS 0.100  
[Sullins Connector Solutions](#)

RFQ



**HMC130-SX**  
IC MMIC MIXER DBL-BAL DIE  
[Analog Devices Inc.](#)

RFQ



**HMC137**  
IC BI-PHASE MODULATOR DIE  
[Analog Devices Inc.](#)

RFQ



**HMC13DRAH-S734**  
CONN EDGE DUAL FEMALE 26POS 0.100  
[Sullins Connector Solutions](#)

RFQ



**HMC132C8**  
[HITTITE](#)

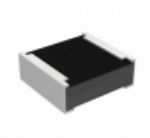
RFQ



**HMC13DRAH**  
CONN EDGE DUAL FEMALE 26POS 0.100  
[Sullins Connector Solutions](#)

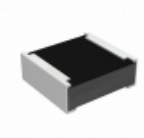
RFQ

### Guess You May Looking For



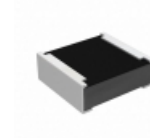
**RCP0505B33R0GS3**  
RES SMD 33 OHM 2% 5W 0505  
[Vishay Dale](#)

RFQ



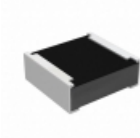
**RCP0505B22R0GS3**  
RES SMD 22 OHM 2% 5W 0505  
[Vishay Dale](#)

RFQ



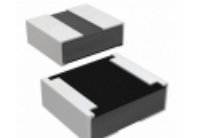
**RCP0505B360RJS3**  
RES SMD 360 OHM 5% 5W 0505  
[Vishay Dale](#)

RFQ



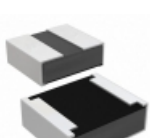
**RCP0505B270RJS3**  
RES SMD 270 OHM 5% 5W 0505  
[Vishay Dale](#)

RFQ



**RCP0505W390RGEB**  
RES SMD 390 OHM 2% 5W 0505  
[Vishay Dale](#)

RFQ



**RCP0505W680RGS3**  
RES SMD 680 OHM 2% 5W 0505  
[Vishay Dale](#)

RFQ



**WSLT59311L000FEB**  
RES SMD 0.001 OHM 1% 5W 5931  
[Vishay Dale](#)

RFQ



**S4-76R8F8**  
RES SMD 76.8 OHM 1% 2W 4525  
[Riedon](#)

RFQ



**RG1608V-1370-W-T1**  
RES SMD 137 OHM 0.05% 1/10W 0603  
[Susumu](#)

RFQ



**RG1005V-1330-W-T5**  
RES SMD 133 OHM 0.05% 1/16W 0402  
[Susumu](#)

RFQ