

## MC33033DWG



[AMI Semiconductor / ON Semiconductor](#)

IC MOTOR CONTROLLER ANALOG 20SO

Lead free / RoHS Compliant

Integrated Circuits (ICs)

[MC33033DWG.pdf](#)

[Buy Now](#)

part#MC33033DWG is available, see description of MC33033DWG as below . use the request quote form to request MC33033DWG price and lead time. Buy Electronic Components at zeanoit.com .we are an independent distributor of electronic components with extensive inventory in stock. The price and lead time for MC33033DWG depending on the quantity required, availability and warehouse location.Contact us today and our sales team will send you quotation soon.  
Email: sales@zeanoit.com

### Shopping Process

1

Confirm the product

2

submit the order

3

payment

4

wait for delivery

5

receive the goods

### Specifications

<b>Voltage - Supply:</b>	10 V ~ 30 V
<b>Voltage - Load:</b>	-
<b>Technology:</b>	-
<b>Supplier Device Package:</b>	20-SOIC
<b>Step Resolution:</b>	-
<b>Series:</b>	-
<b>Packaging:</b>	Tube
<b>Package / Case:</b>	20-SOIC (0.295", 7.50mm Width)
<b>Output Configuration:</b>	Pre-Driver - Half Bridge (3)
<b>Operating Temperature:</b>	-40°C ~ 85°C (TA)
<b>Mounting Type:</b>	Surface Mount
<b>Motor Type - Stepper:</b>	-
<b>Motor Type - AC, DC:</b>	Brushless DC (BLDC)
<b>Interface:</b>	Analog
<b>Function:</b>	Controller - Commutation, Direction Management
<b>Current - Output:</b>	-
<b>Applications:</b>	General Purpose

### Related products



**MC33033PG**  
IC MOTOR CONTROLLER ANALOG 20DIP  
[ON Semiconductor](#)

[RFQ](#)



**MC33030DWR2G**  
IC MOTOR DRIVER ANALOG 16SOIC  
[ON Semiconductor](#)

[RFQ](#)



**MC33033DW**  
IC MOTOR CONTROLLER ANALOG 20SO  
[ON Semiconductor](#)

[RFQ](#)



**MC33033DWR2**  
IC MOTOR CONTROLLER ANALOG 20SO  
[ON Semiconductor](#)

[RFQ](#)



**MC33033DWR2G**  
IC MOTOR CONTROLLER ANALOG 20SO  
[ON Semiconductor](#)

[RFQ](#)



**MC33030P**  
IC MOTOR DRIVER ANALOG 16DIP  
[ON Semiconductor](#)

[RFQ](#)



**MC33030PG**  
IC MOTOR DRIVER ANALOG 16DIP  
[ON Semiconductor](#)

[RFQ](#)



**MC33030DWR2**  
IC MOTOR DRIVER ANALOG 16SOIC  
[ON Semiconductor](#)

[RFQ](#)



**MC33035DW**  
IC MOTOR CONTROLLER ANALOG 24SO  
[ON Semiconductor](#)

[RFQ](#)



**MC33033P**  
IC MOTOR CONTROLLER ANALOG 20DIP  
[ON Semiconductor](#)

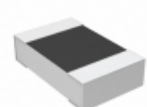
[RFQ](#)

### Guess You May Looking For



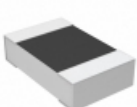
**RCP0603W68R0GEA**  
RES SMD 68 OHM 2% 3.9W 0603  
[Vishay Dale](#)

[RFQ](#)



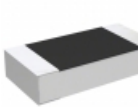
**RP73D2A97R6BTG**  
RES SMD 97.6 OHM 0.1% 1/8W 0805  
[TE Connectivity Passive Product](#)

[RFQ](#)



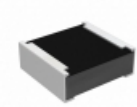
**RP73D2A154KBTG**  
RES SMD 154K OHM 0.1% 1/8W 0805  
[TE Connectivity Passive Product](#)

[RFQ](#)



**RP73D2B750KBTG**  
RES SMD 750K OHM 0.1% 1/4W 1206  
[TE Connectivity Passive Product](#)

[RFQ](#)



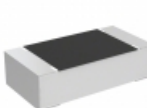
**RCP0505B100RJTP**  
RES SMD 100 OHM 5% 5W 0505  
[Vishay Dale](#)

[RFQ](#)



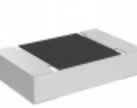
**RCP0603W15R0GEB**  
RES SMD 15 OHM 2% 3.9W 0603  
[Vishay Dale](#)

[RFQ](#)



**TNPU06038K66BZEN00**  
RES SMD 8.66KOHM 0.1% 1/10W 0603  
[Vishay Dale](#)

[RFQ](#)



**TNPU080517K4BZEN00**  
RES SMD 17.4K OHM 0.1% 1/8W 0805  
[Vishay Dale](#)

[RFQ](#)



**RCP0505W220RGEB**  
RES SMD 220 OHM 2% 5W 0505  
[Vishay Dale](#)

[RFQ](#)



**RG2012V-7680-W-T1**  
RES SMD 768 OHM 0.05% 1/8W 0805  
[Susumu](#)

[RFQ](#)