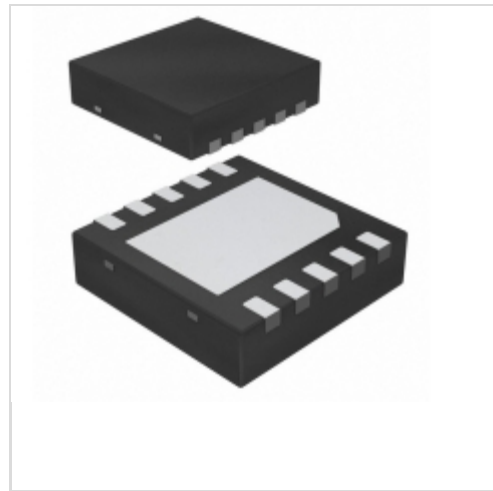


## LM5101ASDX/NOPB



N/A  
IC DVR HALF-BRIDGE HV 10WSON  
Lead free / RoHS Compliant  
Integrated Circuits (ICs)

 **Buy Now**

**Out Stock**

**0 pcs**

Minimum:1

Multiples:1

Manufacturer lead time 10 weeks

Images are for reference only.

See Product Specifications for product details.

If you are interested to buy LM5101ASDX/NOPB, Just Email us.

Sales@zeanoit.com

our sales team will reply you within 24 hours

### Shopping Process

**1**

**Confirm the product**

**2**

**submit the order**

**3**

**payment**

**4**

**wait for delivery**

**5**

**receive the goods**

### Specifications

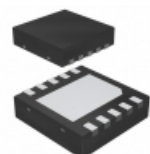
<b>Voltage - Supply:</b>	9 V ~ 14 V
<b>Supplier Device Package:</b>	10-WSON (4x4)
<b>Series:</b>	-
<b>Rise / Fall Time (Typ):</b>	430ns, 260ns
<b>Packaging:</b>	Tape & Reel (TR)
<b>Package / Case:</b>	10-WDFN Exposed Pad
<b>Operating Temperature:</b>	-40°C ~ 125°C (TJ)
<b>Number of Drivers:</b>	2
<b>Mounting Type:</b>	Surface Mount
<b>Logic Voltage - VIL, VIH:</b>	2.3V, -
<b>Input Type:</b>	Non-Inverting
<b>High Side Voltage - Max (Bootstrap):</b>	118V
<b>Gate Type:</b>	N-Channel MOSFET
<b>Driven Configuration:</b>	Half-Bridge
<b>Current - Peak Output (Source, Sink):</b>	3A, 3A
<b>Channel Type:</b>	Independent

### Related products



**LM5101BMA/NOPB**  
IC DRVR HALF BRDGD 100V 2A 8-SOIC  
[N/A](#)

**RFQ**



**LM5101ASD/NOPB**  
IC DVR HALF-BRIDGE HV 10WSON  
[N/A](#)

**RFQ**



**LM5101ASDX-1/NOPB**  
IC DVR HALF-BRIDGE HV 8WSON  
[N/A](#)

**RFQ**



**LM5101BMAX/NOPB**  
IC DVR HALF BRIDG 100V 2A 8-SOIC  
[N/A](#)

**RFQ**



**LM5101BMAX**  
IC DVR HALF BRIDG 100V 2A 8-SOIC  
[N/A](#)

**RFQ**



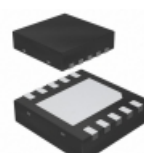
**LM5101ASD-1/NOPB**  
IC DVR HALF-BRIDGE HV 8WSON  
[N/A](#)

**RFQ**



**LM5101BSD**  
IC DRIVER HALF-BRIDGE HV 10WSON  
[N/A](#)

**RFQ**



**LM5101ASDX**  
IC DVR HALF-BRIDGE HV 10WSON  
[N/A](#)

**RFQ**



**LM5101BMA**  
IC DRVR HALF BRDGD 100V 2A 8-SOIC  
[N/A](#)

**RFQ**



**LM5101ASD-1**  
[TI](#)

**RFQ**

### Guess You May Looking For



**RG3216N-2262-D-T5**  
RES SMD 22.6K OHM 0.5% 1/4W 1206  
[Susumu](#)

**RFQ**



**RNCF2010BKE470R**  
RES SMD 470 OHM 0.1% 1/3W 2010  
[Stackpole Electronics Inc.](#)

**RFQ**



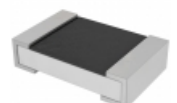
**RNCF1210BTC8R45**  
RES SMD 8.45 OHM 0.1% 1/3W 1210  
[Stackpole Electronics Inc.](#)

**RFQ**



**RNCF1210BTC280R**  
RES SMD 280 OHM 0.1% 1/3W 1210  
[Stackpole Electronics Inc.](#)

**RFQ**



**PE0805FRF770R005L**  
RES SMD 0.005 OHM 1% 1/3W 0805  
[Yageo](#)

**RFQ**



**RNCF2512BTC360R**  
RES SMD 360 OHM 0.1% 3/4W 2512  
[Stackpole Electronics Inc.](#)

**RFQ**



**RT1210CRD07102RL**  
RES SMD 102 OHM 0.25% 1/4W 1210  
[Yageo](#)

**RFQ**



**RVC2512FT300K**  
RES SMD 300K OHM 1% 1W 2512  
[Stackpole Electronics Inc.](#)

**RFQ**



**RT0805WRD0739RL**  
RES SMD 39 OHM 0.05% 1/8W 0805  
[Yageo](#)

**RFQ**



**RNCF2512BKE1K69**  
RES SMD 1.69K OHM 0.1% 3/4W 2512  
[Stackpole Electronics Inc.](#)

**RFQ**