

LM3410YSDE/NOPB



N/A
 IC LED DRVR RGLTR DIM 2.8A 6WSON
 Lead free / RoHS Compliant
 Integrated Circuits (ICs)

Buy Now

Part No. LM3410YSDE/NOPB Is this a common-used part? : Yes
 Shipped from : HK or Singapore warehouse
 Same model may have multiple batches, images only for reference.
 ECAD Models : Contact us to get
 Email:sales@zeanoit.com

In Stock
441 pcs
 Minimum:1
 Multiples:1
 Manufacturer lead time 10 weeks

PRICE	
1 pcs	\$1.89
10 pcs	\$1.695
100 pcs	\$1.362

Shopping Process

1

Confirm the product

2

submit the order

3

payment

4

wait for delivery

5

receive the goods

Specifications

Voltage - Supply (Min):	2.7V
Voltage - Supply (Max):	5.5V
Voltage - Output:	3 V ~ 24 V
Type:	DC DC Regulator
Topology:	SEPIC, Step-Up (Boost)
Supplier Device Package:	6-WSON (3x3)
Series:	-
Packaging:	Original-Reel®
Package / Case:	6-WDFN Exposed Pad
Operating Temperature:	-40°C ~ 125°C (TJ)
Number of Outputs:	1
Mounting Type:	Surface Mount
Internal Switch(s):	Yes
Frequency:	525kHz
Dimming:	PWM
Current - Output / Channel:	2.8A (Switch)
Applications:	Backlight

Related products



LM3410YQMF/NOPB
 IC LED DRIVER RGLTR DIM SOT23-5
 N/A

RFQ



LM3411AM5-3.3
 IC VREF SHUNT 3.3V SOT23-5
 N/A

RFQ



LM3411AM5-3.3/NOPB
 IC VREF SHUNT 3.3V SOT23-5
 N/A

RFQ



LM3410MYX/NOPB
 IC LED DRVR RGLTR DIM 2.8A 8MSOP
 N/A

RFQ



LM3410YQMF
 in stock
 N/A

RFQ



LM3410YSDX/NOPB
 IC LED DRVR RGLTR DIM 2.8A 6WSON
 N/A

RFQ



LM3410YSD/NOPB
 IC LED DRVR RGLTR DIM 2.8A 6WSON
 N/A

RFQ



LM3410YQMF/NOPB
 IC LED DRIVER RGLTR DIM SOT23-5
 N/A

RFQ



LM3411AM5-5.0-NOPB
 NSC

RFQ



LM3411AM5-5.0
 IC VREF SHUNT 5V SOT23-5
 N/A

RFQ

Guess You May Looking For



RG1608N-3572-W-T1
 RES SMD 35.7K OHM 1/10W 0603
 Susumu

RFQ



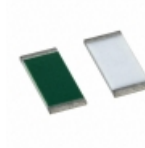
RG1005N-6982-B-T5
 RES SMD 69.8KOHM 0.1% 1/16W 0402
 Susumu

RFQ



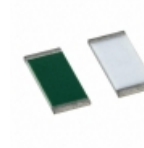
SMF5910KJT
 RES SMD 910K OHM 5% 5W 5329
 TE Connectivity Passive Product

RFQ



PAT0805E2432BST1
 RES SMD 24.3K OHM 0.1% 1/5W 0805
 Vishay Thin Film

RFQ



PAT0805E9650BST1
 RES SMD 965 OHM 0.1% 1/5W 0805
 Vishay Thin Film

RFQ



SM4124JT18L0
 RES SMD 0.018 OHM 5% 2W 4124
 Stackpole Electronics Inc.

RFQ



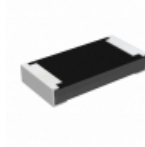
RT0805WRB07332RL
 RES SMD 332 OHM 0.05% 1/8W 0805
 Yageo

RFQ



RT0603WRB0716R5L
 RES SMD 16.5OHM 0.05% 1/10W 0603
 Yageo

RFQ



RCP1206B30R0JEA
 RES SMD 30 OHM 5% 11W 1206
 Vishay Dale

RFQ



PTN1206E1520BST1
 RES SMD 152 OHM 0.1% 0.4W 1206
 Vishay Thin Film

RFQ

