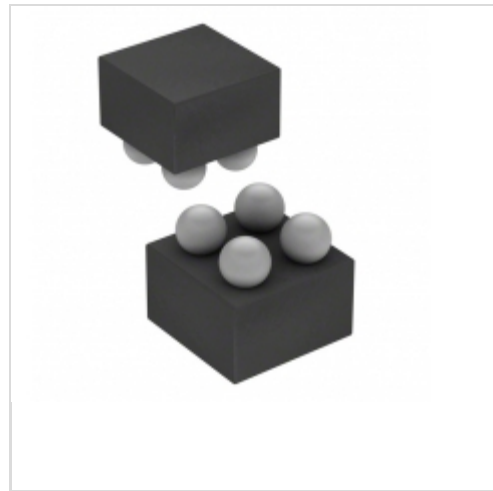


MAX2209EBS+T



Maxim Integrated

IC RF POWER DETECTOR 4-UCSP
Lead free / RoHS Compliant
RF/IF and RFID

[MAX2209EBS+T.pdf](#)

Buy Now

Images are for reference only.

See Product Specifications for product details.

If you are interested to buy MAX2209EBS+T,Just Email us.

Sales@zeanoit.com

our sales team will reply you within 24 hours

Shopping Process

1

Confirm the product

2

submit the order

3

payment

4

wait for delivery

5

receive the goods

Specifications

Voltage - Supply:	2.7 V ~ 5 V
Series:	-
RF Type:	W-CDMA, HSPDA
Packaging:	Tape & Reel (TR)
Package / Case:	4-WFBGA, CSPBGA
Input Range:	-25dBm ~ 0dBm
Frequency:	800MHz ~ 2GHz
Current - Supply:	3.6mA
Accuracy:	±0.5dB

Related products



MAX2209EBS+T10
IC RF POWER DETECTOR 4-UCSP
[Maxim Integrated](#)

RFQ



MAX2209AEVKIT+
EVAL KIT MAX2209A TIMING
[Maxim Integrated](#)

RFQ



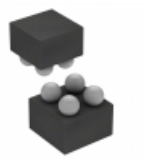
MAX2209EVKIT+
EVAL KIT MAX2209
[Maxim Integrated](#)

RFQ



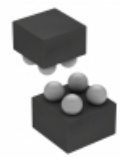
MAX2209EBS+
in stock
[MAXIM](#)

RFQ



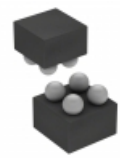
MAX2209AEBS+TG45
IC RF POWER DETECTOR 4UCSP
[Maxim Integrated](#)

RFQ



MAX2209AEBS+T10G45
IC RF POWER DETECTOR 4UCSP
[Maxim Integrated](#)

RFQ



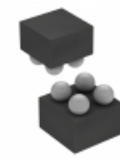
MAX2209AEBS+T10
IC RF POWER DETECTOR 4UCSP
[Maxim Integrated](#)

RFQ



MAX2209EBS+TG45
IC RF PWR DETECTOR 4UCSP
[Maxim Integrated](#)

RFQ



MAX2209EBS+T10G45
IC RF PWR DETECTOR 4UCSP
[Maxim Integrated](#)

RFQ



MAX220C
in stock
[MAXIM](#)

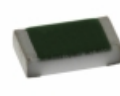
RFQ

Guess You May Looking For



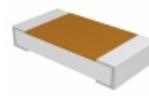
PAT0805E1822BST1
RES SMD 18.2K OHM 0.1% 1/5W 0805
[Vishay Thin Film](#)

RFQ



TNPW060386K6BEEN
RES SMD 86.6KOHM 0.1% 1/10W 0603
[Vishay Dale](#)

RFQ



TNPW1206107KBEEN
RES SMD 107K OHM 0.1% 1/4W 1206
[Vishay Dale](#)

RFQ



PAT0805E2612BST1
RES SMD 26.1K OHM 0.1% 1/5W 0805
[Vishay Thin Film](#)

RFQ



PAT0805E2871BST1
RES SMD 2.87K OHM 0.1% 1/5W 0805
[Vishay Thin Film](#)

RFQ



PAT0805E1292BST1
RES SMD 12.9K OHM 0.1% 1/5W 0805
[Vishay Thin Film](#)

RFQ



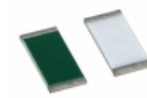
PAT0805E1332BST1
RES SMD 13.3K OHM 0.1% 1/5W 0805
[Vishay Thin Film](#)

RFQ



PAT0805E6261BST1
RES SMD 6.26K OHM 0.1% 1/5W 0805
[Vishay Thin Film](#)

RFQ



PAT0805E2292BST1
RES SMD 22.9K OHM 0.1% 1/5W 0805
[Vishay Thin Film](#)

RFQ



RG2012N-6980-W-T1
RES SMD 698 OHM 0.05% 1/8W 0805
[Susumu](#)

RFQ