

## SMS3923-015LF




Skyworks Solutions, Inc.

DIODE SCHOTTKY 20V 50MA SOT143

Lead free / RoHS Compliant

Discrete Semiconductor Products

 [SMS3923-015LF.pdf](#)

 [Buy Now](#)

Images are for reference only.

See Product Specifications for product details.

If you are interested to buy SMS3923-015LF, Just Email us.

Sales@zeanoit.com

our sales team will reply you within 24 hours

### Shopping Process

**1**

Confirm the product

**2**

submit the order

**3**

payment

**4**

wait for delivery

**5**

receive the goods

### Specifications

<b>Voltage - Peak Reverse (Max):</b>	20V
<b>Supplier Device Package:</b>	SOT-143
<b>Series:</b>	-
<b>Resistance @ If, F:</b>	-
<b>Power Dissipation (Max):</b>	75mW
<b>Packaging:</b>	Tape & Reel (TR)
<b>Package / Case:</b>	TO-253-4, TO-253AA
<b>Operating Temperature:</b>	150°C (TJ)
<b>Diode Type:</b>	Schottky - 2 Independent
<b>Current - Max:</b>	50mA
<b>Capacitance @ Vr, F:</b>	-

### Related products



**SMS3923-081LF/XBO**  
SKYWORKS

RFQ



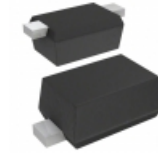
**SMS3923-005**  
Skyworks

RFQ



**SMS3923-001LF**  
DIODE SCHOTTKY 50MA  
Skyworks Solutions Inc.

RFQ



**SMS3923-079LF**  
DIODE SCHOTTKY 20V 50MA SC79  
Skyworks Solutions Inc.

RFQ



**SMS3923-040LF**  
DIODE SCHOTTKY 20V 50MA  
Skyworks Solutions Inc.

RFQ



**SMS3923-011LF**  
DIODE SCHOTTKY 20V 50MA SOD323  
Skyworks Solutions Inc.

RFQ



**SMS3923-081LF**  
DIODE SCHOTTKY 20V 50MA SC88  
Skyworks Solutions Inc.

RFQ



**SMS3923-011**  
SKYWORKS

RFQ



**SMS3923-005LF**  
DIODE SCHOTTKY 20V SOT-23  
Skyworks Solutions Inc.

RFQ



**SMS3923-075**  
SKYWORKS

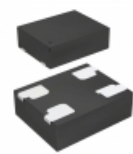
RFQ

### Guess You May Looking For



**SIT1602BC-72-25N-27.00000G**  
-20 TO 70C, 2016, 25PPM, 2.5V, 2  
SITIME

RFQ



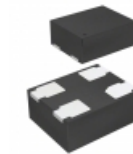
**SIT1602BC-13-33E-32.768000G**  
-20 TO 70C, 2520, 50PPM, 3.3V, 3  
SITIME

RFQ



**SIT1602BC-13-30E-62.500000G**  
-20 TO 70C, 2520, 50PPM, 3.0V, 6  
SITIME

RFQ



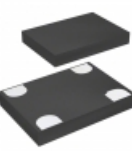
**SIT1602BC-72-28S-33.330000G**  
-20 TO 70C, 2016, 25PPM, 2.8V, 3  
SITIME

RFQ



**SIT1602BI-33-25N-35.840000X**  
-40 TO 85C, 5032, 50PPM, 2.5V, 3  
SITIME

RFQ



**SIT1602BI-83-28S-33.300000X**  
-40 TO 85C, 7050, 50PPM, 2.8V, 3  
SITIME

RFQ



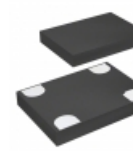
**SIT1602BC-33-18N-8.192000X**  
-20 TO 70C, 5032, 50PPM, 1.8V, 8  
SITIME

RFQ



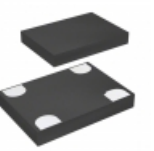
**SIT1602BC-83-18N-72.000000X**  
-20 TO 70C, 7050, 50PPM, 1.8V, 7  
SITIME

RFQ



**SIT1602BC-83-18E-50.000000X**  
-20 TO 70C, 7050, 50PPM, 1.8V, 5  
SITIME

RFQ



**SIT1602BC-83-28E-33.333300X**  
-20 TO 70C, 7050, 50PPM, 2.8V, 3  
SITIME

RFQ