

## NCP1605ADR2G



[AMI Semiconductor / ON Semiconductor](#)

IC PFC CONTROLLER CCM/DCM 16SOIC

Lead free / RoHS Compliant

Integrated Circuits (ICs)

[NCP1605ADR2G.pdf](#)

**Buy Now**

We can supply AMI Semiconductor / ON Semiconductor NCP1605ADR2G, use the request quote form to request NCP1605ADR2G price, AMI Semiconductor / ON Semiconductor Datasheet PDF and lead time. Zeanoit.com is a professional electronic components distributor. With 3+ Million line items of available electronic components can ship in short lead-time, over 250 thousand part numbers of electronic components in stock for immediately delivery, which may include part number NCP1605ADR2G. The price and lead time for NCP1605ADR2G depending on the quantity required, availability and warehouse location.

**Out Stock**

**0 pcs**

Minimum:1

Multiples:100

Manufacturer lead time 10 weeks

### Shopping Process

**1**

**Confirm the product**

**2**

**submit the order**

**3**

**payment**

**4**

**wait for delivery**

**5**

**receive the goods**

### Specifications

<b>Voltage - Supply:</b>	10 V ~ 20 V
<b>Supplier Device Package:</b>	16-SOIC
<b>Series:</b>	Soft-Skip™
<b>Packaging:</b>	Tape & Reel (TR)
<b>Package / Case:</b>	16-SOIC (0.154", 3.90mm Width)
<b>Operating Temperature:</b>	0°C ~ 125°C
<b>Mounting Type:</b>	Surface Mount
<b>Mode:</b>	Critical Conduction (CRM), Discontinuous Conduction (DCM)
<b>Frequency - Switching:</b>	250kHz
<b>Current - Startup:</b>	12mA

### Related products



**NCP1602BOOSTGEVB**  
EVAL BOARD NCP1602BOOSTG  
[ON Semiconductor](#)

RFQ



**NCP1605LCDTVGEVB**  
BOARD EVAL NCP1605/1396  
[ON Semiconductor](#)

RFQ



**NCP1606ADR**  
[ON](#)

RFQ



**NCP1603D100R2G**  
IC CTRL PFC/PWM COMBO 16-SOIC  
[ON Semiconductor](#)

RFQ



**NCP1605BDR2G**  
IC POWER FACTOR CTRLR ENH 16-SOIC  
[ON Semiconductor](#)

RFQ



**NCP1605FORWGEVB**  
EVAL BOARD FOR NCP1605FORWG  
[ON Semiconductor](#)

RFQ



**NCP1602BEASNT1G**  
IC PFC CONTROLLER CRM 6TSOP  
[ON Semiconductor](#)

RFQ



**NCP1603D100G**  
[ON](#)

RFQ



**NCP1605DR2G**  
IC PFC CONTROLLER CCM/DCM 16SOIC  
[ON Semiconductor](#)

RFQ



**NCP1603D100R2**  
IC CTRLR PFC/PWM HV START 16SOIC  
[ON Semiconductor](#)

RFQ

### Guess You May Looking For



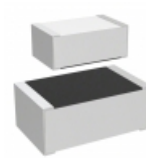
**RG2012V-1401-P-T1**  
RES SMD 1.4K OHM 0.02% 1/8W 0805  
[Susumu](#)

RFQ



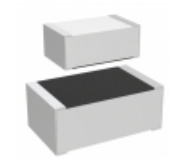
**RG3216V-1620-B-T5**  
RES SMD 162 OHM 0.1% 1/4W 1206  
[Susumu](#)

RFQ



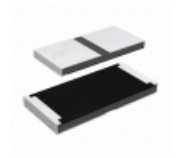
**M55342K06B40B2RT1**  
RES SMD 40.2KOHM 0.1% 0.15W 0805  
[Vishay Dale](#)

RFQ



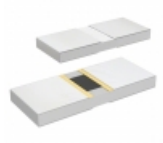
**M55342K06B412ART1**  
RES SMD 412 OHM 0.1% 0.15W 0705  
[Vishay Dale](#)

RFQ



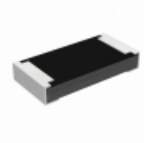
**RCP2512W620RGEB**  
RES SMD 620 OHM 2% 22W 2512  
[Vishay Dale](#)

RFQ



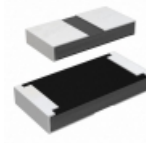
**PHP01206E4991BBT5**  
RES SMD 4.99K OHM 0.1% 1W 1206  
[Vishay Thin Film](#)

RFQ



**RCP1206B13R0JEC**  
RES SMD 13 OHM 5% 11W 1206  
[Vishay Dale](#)

RFQ



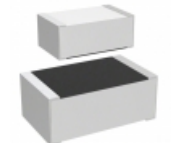
**RCP1206W390RJS2**  
RES SMD 390 OHM 5% 11W 1206  
[Vishay Dale](#)

RFQ



**RCP0603W33R0GEC**  
RES SMD 33 OHM 2% 3.9W 0603  
[Vishay Dale](#)

RFQ



**M55342H06B511DRT5**  
RES SMD 511 OHM 1% 0.15W 0705  
[Vishay Dale](#)

RFQ