

**BR24S64FJ-WE2**



**LAPIS Semiconductor**  
IC EEPROM 64KBIT 400KHZ 8SOP-J  
Lead free / RoHS Compliant  
Integrated Circuits (ICs)

[BR24S64FJ-WE2.pdf](#)

**Buy Now**

**Out Stock**  
**0 pcs**  
Minimum:1  
Multiples:100  
Manufacturer lead time 10 weeks

We can supply BR24S64FJ-WE2, use the request quote form to request BR24S64FJ-WE2 price and lead time. Zeano is a professional electronic components distributor. With 3+ Million line items of available electronic components can ship in short lead-time, over 250 thousand part numbers of electronic components in stock for immediately delivery, which may include part number BR24S64FJ-WE2. The price and lead time for BR24S64FJ-WE2 depending on the quantity required and warehouse location. Contact us and our sales representative will provide you price. We look forward to work with you.

Shopping Process

**1**

Confirm the product

**2**

submit the order

**3**

payment

**4**

wait for delivery

**5**

receive the goods

Specifications

|                                 |                                 |
|---------------------------------|---------------------------------|
| <b>Voltage - Supply:</b>        | 1.7 V ~ 5.5 V                   |
| <b>Supplier Device Package:</b> | 8-SOP-J                         |
| <b>Speed:</b>                   | 400kHz                          |
| <b>Series:</b>                  | -                               |
| <b>Packaging:</b>               | Tape & Reel (TR)                |
| <b>Package / Case:</b>          | 8-SOIC (0.154", 3.90mm Width)   |
| <b>Operating Temperature:</b>   | -40°C ~ 85°C (TA)               |
| <b>Memory Type:</b>             | Non-Volatile                    |
| <b>Memory Size:</b>             | 64Kb (8K x 8)                   |
| <b>Memory Format:</b>           | EEPROM                          |
| <b>Interface:</b>               | I <sup>2</sup> C, 2-Wire Serial |

Related products



**BR24S64F-WSE2**  
ROHM

RFQ



**BR24S64FVJ-WE2**  
IC EEPROM 64KBIT 400KHZ 8TSSOP  
Rohm Semiconductor

RFQ



**BR24S64F-WE2 SOP8**  
ROSH

RFQ



**BR24S64F-WF2**  
ROHM

RFQ



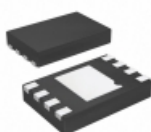
**BR24S64FUJ-WE2**  
ROHM

RFQ



**BR24S64F-WE2**  
IC EEPROM 64KBIT 400KHZ 8SOP  
Rohm Semiconductor

RFQ



**BR24S32NUX-WTR**  
IC EEPROM 32KBIT 400KHZ 8VSON  
Rohm Semiconductor

RFQ



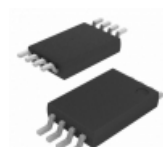
**BR24S64FVM**  
ROHM

RFQ



**BR24S64FVM-W0055TR**  
ROHM

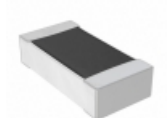
RFQ



**BR24S64FV-WE2**  
IC EEPROM 64KBIT 400KHZ 8SSOP  
Rohm Semiconductor

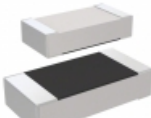
RFQ

Guess You May Looking For



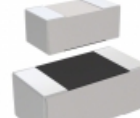
**RMCF0603JT47K0**  
RES SMD 47K OHM 5% 1/10W 0603  
Stackpole Electronics Inc.

RFQ



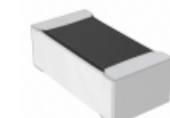
**RC3216J151CS**  
RES SMD 150 OHM 5% 1/4W 1206  
Samsung Electro-Mechanics America, Inc.

RFQ



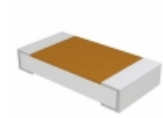
**RC1005J160CS**  
RES SMD 16 OHM 5% 1/16W 0402  
Samsung Electro-Mechanics America, Inc.

RFQ



**CPF0402B7K68E1**  
RES SMD 7.68KOHM 0.1% 1/16W 0402  
TE Connectivity Passive Product

RFQ



**TNPU12063K83BZEN00**  
RES SMD 3.83K OHM 0.1% 1/4W 1206  
Vishay Dale

RFQ



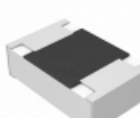
**RC0603FR-077R87L**  
RES SMD 7.87 OHM 1% 1/10W 0603  
Yageo

RFQ



**ERJ-PA3F8451V**  
RES SMD 8.45K OHM 1% 1/4W 0805  
Panasonic Electronic Components

RFQ



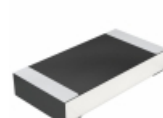
**ERJ-PB6D2942V**  
RES SMD 29.4K OHM 0.5% 1/4W 0805  
Panasonic Electronic Components

RFQ



**CR1206-FX-3923ELF**  
RES SMD 392K OHM 1% 1/4W 1206  
Bourns Inc.

RFQ



**CRCW12062R26FNEA**  
RES SMD 2.26 OHM 1% 1/4W 1206  
Vishay Dale

RFQ