

EYP-2MT102



Panasonic

TCO 50VDC 2A 102C(216F) STRAP
 Contains lead / RoHS non-compliant
 Circuit Protection

[EYP-2MT102.pdf](#)

Buy Now

We can supply Panasonic EYP-2MT102, use the request quote form to request EYP-2MT102 price, Panasonic Datasheet PDF and lead time. Zeanoit.com is a professional electronic components distributor. With 3+ Million line items of available electronic components can ship in short lead-time, over 250 thousand part numbers of electronic components in stock for immediately delivery, which may include part number EYP-2MT102. The price and lead time for EYP-2MT102 depending on the quantity required, availability and warehouse location.

Shopping Process

1

Confirm the product

2

submit the order

3

payment

4

wait for delivery

5

receive the goods

Specifications

Voltage - Rated DC:	50V
Voltage - Rated AC:	-
Series:	MT
Rated Functioning Temperature:	102°C (216°F)
Package / Case:	Strap
Maximum Temperature Limit:	150°C (302°F)
Holding Temperature:	70°C (158°F)
Current Rating:	2A
Approvals:	UL

Related products



EYP-2MT092A
 TCO 50VDC 2A 92C(198F) STRAP
[Panasonic Electronic Components](#)

RFQ



EYP-2MT102B
 TCO 50VDC 2A 102C(216F) STRAP
[Panasonic Electronic Components](#)

RFQ



EYP-2MT098A
 TCO 50VDC 2A 98C(208F) STRAP
[Panasonic Electronic Components](#)

RFQ



EYP-2BN183
 TCO 250VAC 2A 188C AXIAL
[Panasonic Electronic Components](#)

RFQ



EYP-2MT098
 TCO 50VDC 2A 98C(208F) STRAP
[Panasonic Electronic Components](#)

RFQ



EYP-2MT092B
 TCO 50VDC 2A 92C(198F) STRAP
[Panasonic Electronic Components](#)

RFQ



EYP-2MT092
 TCO 50VDC 2A 92C(198F) STRAP
[Panasonic Electronic Components](#)

RFQ



EYP-2BN163
 TCO 250VAC 2A 168C(334F) AXIAL
[Panasonic Electronic Components](#)

RFQ



EYP-2MT102A
 TCO 50VDC 2A 102C(216F) STRAP
[Panasonic Electronic Components](#)

RFQ



EYP-2MT098B
 TCO 50VDC 2A 98C(208F) STRAP
[Panasonic Electronic Components](#)

RFQ

Guess You May Looking For



1.5SMC43AT3G
 TVS DIODE 36.8VWM 59.3VC SMC
[Littelfuse Inc.](#)

RFQ



P6SMB540CA
 TVS DIODE 460VWM 740VC DO214AA
[Littelfuse Inc.](#)

RFQ



SMBJ33A/54
 TVS DIODE 33VWM 53.3VC SMD
[Vishay Semiconductor Diodes Division](#)

RFQ



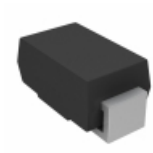
SM6T220CAHE3/5B
 TVS DIODE 188VWM 328VC SMB
[Vishay Semiconductor Diodes Division](#)

RFQ



1KSMB12A
 TVS DIODE 10.2VWM 16.7VC SMD
[Littelfuse Inc.](#)

RFQ



SMA5J9.0CA-M3/5A
 TVS DIODE 9VWM 15.4VC DO-214AC
[Vishay Semiconductor Diodes Division](#)

RFQ



1KSMB8.2A
 TVS DIODE 7.02VWM 12.1VC SMD
[Littelfuse Inc.](#)

RFQ



1.5SMC130A
 TVS DIODE 111VWM 179VC SMD
[Littelfuse Inc.](#)

RFQ



SMBJ12A/54
 TVS DIODE 12VWM 19.9VC SMD
[Vishay Semiconductor Diodes Division](#)

RFQ



P6SMB12CAHE3/5B
 TVS DIODE 10.2VWM 16.7VC SMB
[Vishay Semiconductor Diodes Division](#)

RFQ