

BR93L56FJ-WE2



LAPIS Semiconductor
IC EEPROM 2KBIT 2MHZ 8SOP-J
Lead free / RoHS Compliant
Integrated Circuits (ICs)

[BR93L56FJ-WE2.pdf](#)

Buy Now

part#BR93L56FJ-WE2 is available, see description of BR93L56FJ-WE2 as below .
use the request quote form to request BR93L56FJ-WE2 price and lead time.
Buy Electronic Components at zeanoit.com .we are an independent distributor of
electronic components with extensive inventory in stock.
The price and lead time for BR93L56FJ-WE2 depending on the quantity required,
availability and warehouse location.Contact us today and our sales team will send you
quotation soon.
Email: sales@zeanoit.com

Out Stock
0 pcs
Minimum:1
Multiples:100
Manufacturer lead time 10 weeks

PRICE	
1 pcs	\$0.44
10 pcs	\$0.436
25 pcs	\$0.404
50 pcs	\$0.402
100 pcs	\$0.357
250 pcs	\$0.353
500 pcs	\$0.347
1000 pcs	\$0.338

Shopping Process

1

Confirm the product

2

submit the order

3

payment

4

wait for delivery

5

receive the goods

Specifications

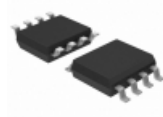
Voltage - Supply:	1.8 V ~ 5.5 V
Supplier Device Package:	8-SOP-J
Speed:	2MHz
Series:	-
Packaging:	Cut Tape (CT)
Package / Case:	8-SOIC (0.154", 3.90mm Width)
Operating Temperature:	-40°C ~ 85°C (TA)
Memory Type:	Non-Volatile
Memory Size:	2Kb (128 x 16)
Memory Format:	EEPROM
Interface:	Microwire, 3-Wire Serial

Related products



BR93L56-W
IC EEPROM 2KBIT 2MHZ 8DIP
[Rohm Semiconductor](#)

RFQ



BR93L56F-WE2
IC EEPROM 2KBIT 2MHZ 8SOP
[Rohm Semiconductor](#)

RFQ



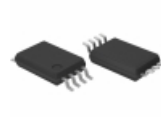
BR93L56
[ROM](#)

RFQ



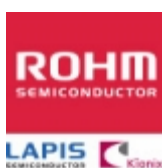
BR93L56RF-WE2
IC EEPROM 2KBIT 2MHZ 8SOP
[Rohm Semiconductor](#)

RFQ



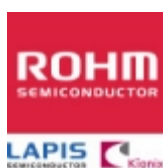
BR93L56FV-WE2
IC EEPROM 2KBIT 2MHZ 8SSOPB
[Rohm Semiconductor](#)

RFQ



BR93L56F-WFE2
[ROHM](#)

RFQ



BR93L56FV-WFE2
[ROHM](#)

RFQ



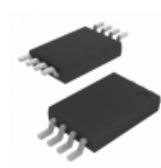
BR93L56RFJ-WE2
IC EEPROM 2KBIT 2MHZ 8SOP-J
[Rohm Semiconductor](#)

RFQ



BR93L56F
[ROHM](#)

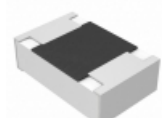
RFQ



BR93L56FVT-WE2
IC EEPROM 2KBIT 2MHZ 8TSSOP-B
[Rohm Semiconductor](#)

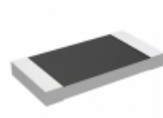
RFQ

Guess You May Looking For



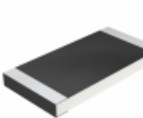
ERJ-6ENF3163V
RES SMD 316K OHM 1% 1/8W 0805
[Panasonic Electronic Components](#)

RFQ



3521200RFT
RES SMD 200 OHM 1% 2W 2512
[TE Connectivity Passive Product](#)

RFQ



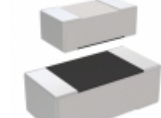
CRCW251212R1FKEG
RES SMD 12.1 OHM 1% 1W 2512
[Vishay Dale](#)

RFQ



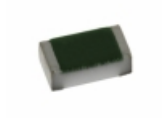
WSR2R0800FEA
RES SMD 0.08 OHM 1% 2W 4527
[Vishay Dale](#)

RFQ



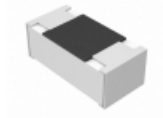
RC1608F4641CS
RES SMD 4.64K OHM 1% 1/10W 0603
[Samsung Electro-Mechanics America, Inc.](#)

RFQ



TNPW040282R0BEED
RES SMD 82 OHM 0.1% 1/16W 0402
[Vishay Dale](#)

RFQ



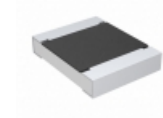
ERJ-1GNF7870C
RES SMD 787 OHM 1% 1/20W 0201
[Panasonic Electronic Components](#)

RFQ



CRCW0402604RDHEDP
RES SMD 604 OHM 0.5% 1/16W 0402
[Vishay Dale](#)

RFQ



CRCW121027R0JNTA
RES SMD 27 OHM 5% 1/2W 1210
[Vishay Dale](#)

RFQ



CSR0402FKR910
RES SMD 0.91 OHM 1% 1/8W 0402
[Stackpole Electronics Inc.](#)

RFQ