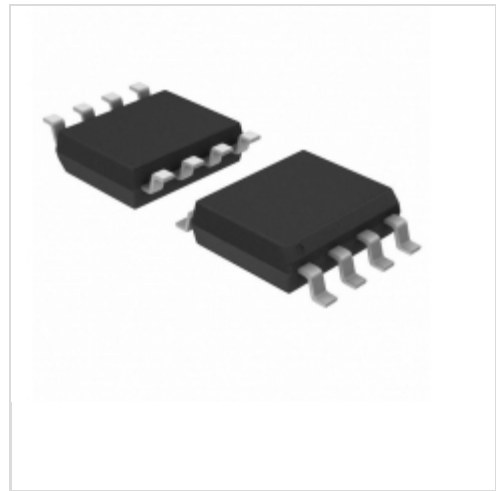



## AT24C02AN-10SI-2.5



### Microchip Technology

IC EEPROM 2KBIT 400KHZ 8SOIC  
Contains lead / RoHS non-compliant  
Integrated Circuits (ICs)

 [AT24C02AN-10SI-2.5.pdf](#)

 **Buy Now**

Images are for reference only.

See Product Specifications for product details.

If you are interested to buy AT24C02AN-10SI-2.5, Just Email us.

Sales@zeanoit.com

our sales team will reply you within 24 hours

### Shopping Process

**1**

Confirm the product

**2**

submit the order

**3**

payment

**4**

wait for delivery

**5**

receive the goods

### Specifications

<b>Voltage - Supply:</b>	2.5 V ~ 5.5 V
<b>Supplier Device Package:</b>	8-SOIC
<b>Speed:</b>	400kHz
<b>Series:</b>	-
<b>Packaging:</b>	Tube
<b>Package / Case:</b>	8-SOIC (0.154", 3.90mm Width)
<b>Operating Temperature:</b>	-40°C ~ 85°C (TA)
<b>Memory Type:</b>	Non-Volatile
<b>Memory Size:</b>	2Kb (256 x 8)
<b>Memory Format:</b>	EEPROM
<b>Interface:</b>	I <sup>2</sup> C, 2-Wire Serial

### Related products



#### AT24C02AN-10SI-2.5

in stock  
[ATMEL](#)

RFQ



#### AT24C02AN-10SI-1.8

IC EEPROM 2KBIT 400KHZ 8SOIC  
[Microchip Technology](#)

RFQ



#### AT24C02AN-10SQ-2.7

in stock  
[ATMEL](#)

RFQ



#### AT24C02AN-10SI-2.7

IC EEPROM 2KBIT 400KHZ 8SOIC  
[Microchip Technology](#)

RFQ



#### AT24C02AN-10SE-2.7

in stock  
[ATMEL](#)

RFQ



#### AT24C02AN-10SJ-2.7

[ATMEL](#)

RFQ



#### AT24C02AN-10SI

IC EEPROM 2KBIT 400KHZ 8SOIC  
[Microchip Technology](#)

RFQ



#### AT24C02AN-10SI-2.7-T

IC EEPROM 2KBIT 400KHZ 8SOIC  
[Microchip Technology](#)

RFQ

#### AT24C02AN-10SI

in stock  
[ATMEL](#)

RFQ

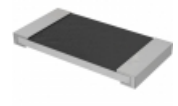


#### AT24C02AN-10SI-1.8-T

IC EEPROM 2KBIT 400KHZ 8SOIC  
[Microchip Technology](#)

RFQ

### Guess You May Looking For



#### RMCF2512FT825R

RES SMD 825 OHM 1% 1W 2512  
[Stackpole Electronics Inc.](#)

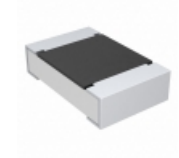
RFQ



#### CRG0402J4K7

RES SMD 4.7K OHM 5% 1/16W 0402  
[TE Connectivity Passive Product](#)

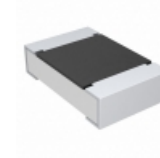
RFQ



#### CRCW080532K4FKEB

RES SMD 32.4K OHM 1% 1/8W 0805  
[Vishay Dale](#)

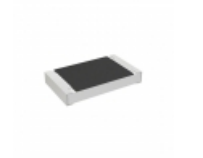
RFQ



#### CRCW08053K60JNTB

RES SMD 3.6K OHM 5% 1/8W 0805  
[Vishay Dale](#)

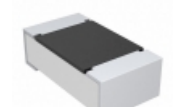
RFQ



#### RCS0603165KFKEA

RES SMD 165K OHM 1% 1/4W 0603  
[Vishay Dale](#)

RFQ



#### CRCW060311K5FKEAHP

RES SMD 11.5K OHM 1% 1/4W 0603  
[Vishay Dale](#)

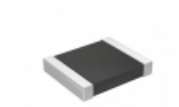
RFQ



#### ERJ-S03F1602V

RES SMD 16K OHM 1% 1/10W 0603  
[Panasonic Electronic Components](#)

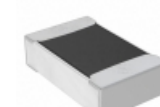
RFQ



#### AC1210FR-07402KL

RES SMD 402K OHM 1% 1/2W 1210  
[Yageo](#)

RFQ



#### RNCF0805DKE5K36

RES SMD 5.36K OHM 0.5% 1/8W 0805  
[Stackpole Electronics Inc.](#)

RFQ



#### RT0603CRE074K7L

RES SMD 4.7KOHM 0.25% 1/10W 0603  
[Yageo](#)

RFQ