

**LYT4217E2**



**Power Integrations**

IC LED DRIVER OFFL 7.73A ESIP-7C  
Lead free / RoHS Compliant  
Integrated Circuits (ICs)

[LYT4217E2.pdf](#)

**Buy Now**

**Out Stock**

**0 pcs**

Minimum:1

Multiples:100

Manufacturer lead time 10 weeks

part#LYT4217E2 is available, see description of LYT4217E2 as below .  
use the request quote form to request LYT4217E2 price and lead time.  
Buy Electronic Components at zeanoit.com .we are an independent distributor of electronic components with extensive inventory in stock.  
The price and lead time for LYT4217E2 depending on the quantity required, availability and warehouse location.Contact us today and our sales team will send you quotation soon.  
Email: sales@zeanoit.com

**Shopping Process**

**1**

**Confirm the product**

**2**

**submit the order**

**3**

**payment**

**4**

**wait for delivery**

**5**

**receive the goods**

**Specifications**

<b>Voltage - Supply (Min):</b>	85VAC
<b>Voltage - Supply (Max):</b>	132VAC
<b>Voltage - Output:</b>	-
<b>Type:</b>	AC DC Offline Switcher
<b>Topology:</b>	Flyback, Step-Down (Buck), Step-Up (Boost)
<b>Supplier Device Package:</b>	eSIP-7C
<b>Series:</b>	LYTSwitch™-4
<b>Packaging:</b>	Tube
<b>Package / Case:</b>	7-SIP, 6 Leads, Exposed Pad, Formed Leads
<b>Operating Temperature:</b>	-40°C ~ 150°C (TJ)
<b>Number of Outputs:</b>	1
<b>Mounting Type:</b>	Surface Mount
<b>Internal Switch(s):</b>	Yes
<b>Frequency:</b>	132kHz
<b>Dimming:</b>	-
<b>Current - Output / Channel:</b>	7.73A (Switch)
<b>Applications:</b>	-

**Related products**



**LYT4218E**  
IC LED DRIVER OFFLINE 9A ESIP-7C  
[Power Integrations](#)

**RFQ**



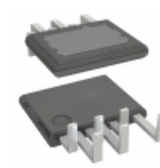
**LYT4216E2**  
IC LED DRIVER OFFL 6.88A ESIP-7C  
[Power Integrations](#)

**RFQ**



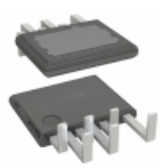
**LYT4218E2**  
IC LED DRIVER OFFLINE 9A ESIP-7C  
[Power Integrations](#)

**RFQ**



**LYT4216L**  
IC LED DRIVER OFFL 6.88A ESIP-7F  
[Power Integrations](#)

**RFQ**



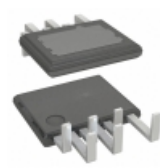
**LYT4218L**  
IC LED DRIVER OFFLINE 9A ESIP-7F  
[Power Integrations](#)

**RFQ**



**LYT4216E**  
[POWER](#)

**RFQ**



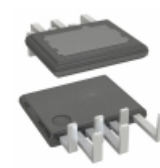
**LYT4215L**  
IC LED DRIVER OFFL 5.44A ESIP-7F  
[Power Integrations](#)

**RFQ**



**LYT4217E**  
IC LED DRIVER OFFL 7.73A ESIP-7C  
[Power Integrations](#)

**RFQ**



**LYT4217L**  
IC LED DRIVER OFFL 7.73A ESIP-7F  
[Power Integrations](#)

**RFQ**



**LYT4221E**  
IC LED DRIVER OFFL 1.37A ESIP-7C  
[Power Integrations](#)

**RFQ**

**Guess You May Looking For**



**TNPW060311K3BEEN**  
RES SMD 11.3KOHM 0.1% 1/10W 0603  
[Vishay Dale](#)

**RFQ**



**TNPW060339K0BEEN**  
RES SMD 39K OHM 0.1% 1/10W 0603  
[Vishay Dale](#)

**RFQ**



**TNPW0603160KBEEN**  
RES SMD 160K OHM 0.1% 1/10W 0603  
[Vishay Dale](#)

**RFQ**



**RG2012N-1073-W-T1**  
RES SMD 107K OHM 0.05% 1/8W 0805  
[Susumu](#)

**RFQ**



**CSSH2728JT12L0**  
RES SMD 0.012 OHM 4W 2827 WIDE  
[Stackpole Electronics Inc.](#)

**RFQ**



**CSSH2728FT24L0**  
RES SMD 0.024 OHM 4W 2827 WIDE  
[Stackpole Electronics Inc.](#)

**RFQ**



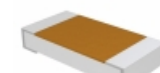
**RT1210CRB07715RL**  
RES SMD 715 OHM 0.25% 1/4W 1210  
[Yageo](#)

**RFQ**



**RT0603WRB07113RL**  
RES SMD 113 OHM 0.05% 1/10W 0603  
[Yageo](#)

**RFQ**



**TNPW12061M65BEEN**  
RES SMD 1.65M OHM 0.1% 1/4W 1206  
[Vishay Dale](#)

**RFQ**



**PHP00603E3791BST1**  
RES SMD 3.79K OHM 0.1% 3/8W 0603  
[Vishay Thin Film](#)

**RFQ**

