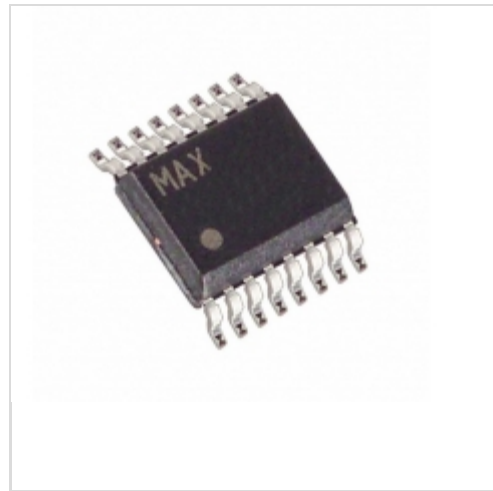


MAX6644LBAAEE+



Maxim Integrated

IC CNTRLR FAN SPEED 16-QSOP

Lead free / RoHS Compliant

Integrated Circuits (ICs)

[1.MAX6644LBAAEE+.pdf](#)

[2.MAX6644LBAAEE+.pdf](#)

Buy Now

In Stock

160 pcs

Minimum:1

Multiples:100

Manufacturer lead time 10 weeks

PRICE

1 pcs	\$2.34
10 pcs	\$2.22
25 pcs	\$1.83
50 pcs	\$1.74
250 pcs	\$1.69
500 pcs	\$1.50

We can supply Maxim Integrated MAX6644LBAAEE+, use the request quote form to request MAX6644LBAAEE+ price, Maxim Integrated Datasheet PDF and lead time. Zeano.com is a professional electronic components distributor. With 3+ Million line items of available electronic components can ship in short lead-time, over 250 thousand part numbers of electronic components in stock for immediately delivery, which may include part number MAX6644LBAAEE+. The price and lead time for MAX6644LBAAEE+ depending on the quantity required, availability and warehouse location.

Shopping Process

1

Confirm the product

2

submit the order

3

payment

4

wait for delivery

5

receive the goods

Specifications

Voltage - Supply:	3 V ~ 5.5 V
Topology:	ADC, PWM Generator, Tach Counter
Supplier Device Package:	16-QSOP
Series:	-
Sensor Type:	Internal and External
Sensing Temperature:	-40°C ~ 125°C, External Sensor
Packaging:	Tube
Package / Case:	16-SSOP (0.154", 3.90mm Width)
Output Type:	PWM
Output Fan:	Yes
Output Alarm:	Yes
Operating Temperature:	-40°C ~ 125°C
Mounting Type:	Surface Mount
Function:	Fan Control, Temp Monitor
Accuracy:	±3.5°C Local(Max), ±3°C Remote(Max)

Related products



MAX6646

in stock

[MAXIM](#)

RFQ



MAX6645ABFAUB+

IC CNTRLR FAN SPEED 10-UMAX

[Maxim Integrated](#)

RFQ



MAX6643LBFAEE+T

IC CTRLR PWM FAN-SPEED 16QSOP

[Maxim Integrated](#)

RFQ



MAX6645BAFAUB+T

IC CNTRLR FAN SPEED 10-UMAX

[Maxim Integrated](#)

RFQ



MAX6644LBAAEE+T

IC CNTRLR FAN SPEED 16-QSOP

[Maxim Integrated](#)

RFQ



MAX6644LBAAEE

[MAXIM](#)

RFQ



MAX6643LBFAEE+

IC CTRLR PWM FAN-SPEED 16QSOP

[Maxim Integrated](#)

RFQ



MAX6643LBBAEE+T

IC CNTRLR FAN SPEED 16-QSOP

[Maxim Integrated](#)

RFQ



MAX6645ABFAUB+T

IC CNTRLR FAN SPEED 10-UMAX

[Maxim Integrated](#)

RFQ



MAX6643LBBAEE+

IC CNTRLR FAN SPEED 16-QSOP

[Maxim Integrated](#)

RFQ

Guess You May Looking For



RN55C8061BR36

RES 8.06K OHM 1/8W .1% AXIAL

[Vishay Dale](#)

RFQ



0505J2500151GQT

CAP CER 150PF 250V COG/NPO 0505

[Knowles Syfer](#)

RFQ

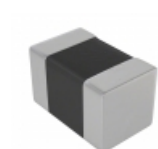


2EX102K1

CAP CER 1000PF 1KV X7R RADIAL

[Semtech Corporation](#)

RFQ



C0805C511F3GACTU

CAP CER 510PF 25V NPO 0805

[KEMET](#)

RFQ



M39003/03-3043/HSD

CAP TANT 270UF 10% 15V AXIAL

[Vishay Sprague](#)

RFQ



ROV10-820K-2

VARISTOR 82V 2.5KA DISC 10MM

[Littelfuse Inc.](#)

RFQ



0070.3011.A2

VARISTOR 47V 250A DISC 5MM

[Schurter Inc.](#)

RFQ



558-00289

FLAPPER DOOR SWIFTMARK 2.0"

[HellermannTyton](#)

RFQ



HM2P80PD5111N9LF

CONN HEADER 55POS TYPE CR VERT

[Amphenol FCI](#)

RFQ



RBM10DCWD

CONN EDGE DUAL FMALE 20POS 0.156

[Sullins Connector Solutions](#)

RFQ