

UCC3802N



N/A
 IC REG CTRLR PWM CM 8DIP
 Lead free / RoHS Compliant
 Integrated Circuits (ICs)

Buy Now

parts#UCC3802N is available, see description of UCC3802N as below .
 use the request quote form to request UCC3802N price and lead time.
 Buy Electronic Components at zeanoit.com .we are an independent distributor of electronic components with extensive inventory in stock.
 The price and lead time for UCC3802N depend on the quantity required, availability and warehouse location.Contact us today and our sales team will send you quotation soon.
 Email: sales@zeanoit.com

In Stock

137 pcs
 Minimum:1
 Multiples:1
 Manufacturer lead time 10 weeks

PRICE	
1 pcs	\$3.55
10 pcs	\$3.192
100 pcs	\$2.615
500 pcs	\$2.226
1000 pcs	\$1.877

Shopping Process



Confirm the product



submit the order



payment



wait for delivery



receive the goods

Specifications

Voltage - Supply (Vcc/Vdd):	8.3 V ~ 12 V
Voltage - Start Up:	12.5V
Voltage - Breakdown:	-
Topology:	Boost, Buck, Flyback, Forward
Supplier Device Package:	8-PDIP
Series:	-
Power (Watts):	-
Packaging:	Tube
Package / Case:	8-DIP (0.300", 7.62mm)
Output Isolation:	-
Operating Temperature:	-40°C ~ 85°C (TA)
Internal Switch(s):	No
Frequency - Switching:	Up to 1MHz
Fault Protection:	Current Limiting
Duty Cycle:	99%
Control Features:	Frequency Control

Related products



UCC3802D
 IC REG CTRLR PWM CM 8SOIC
[N/A](#)

RFQ



UCC3802DTR
 IC REG CTRLR PWM CM 8SOIC
[N/A](#)

RFQ



UCC3803DG4
 IC REG CTRLR MULT TOPOLOGY 8SOIC
[N/A](#)

RFQ



UCC3803
 in stock
[N/A](#)

RFQ



UCC3802DTRG4
 IC REG CTRLR PWM CM 8SOIC
[N/A](#)

RFQ



UCC3802DG4
 IC REG CTRLR PWM CM 8SOIC
[N/A](#)

RFQ



UCC3802DR
[IC](#)

RFQ



UCC3802NG4
 IC REG CTRLR PWM CM 8DIP
[N/A](#)

RFQ



UCC3803D
 IC REG CTRLR MULT TOPOLOGY 8SOIC
[N/A](#)

RFQ



UCC3802PW
 IC REG CTRLR PWM CM 8TSSOP
[N/A](#)

RFQ

Guess You May Looking For



CRGV2010F383K
 RES SMD 383K OHM 1% 1/2W 2010
[TE Connectivity Passive Product](#)

RFQ



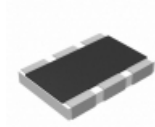
AC2512FK-07806RL
 RES SMD 806 OHM 1% 1W 2512
[Yageo](#)

RFQ



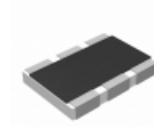
KTR25JZPJ393
 RES SMD 39K OHM 5% 1/3W 1210
[Rohm Semiconductor](#)

RFQ



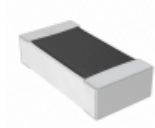
RC1218FK-0718RL
 RES SMD 18 OHM 1W 1812 WIDE
[Yageo](#)

RFQ



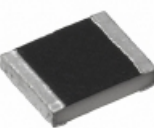
RC1218FK-077K5L
 RES SMD 7.5K OHM 1W 1812 WIDE
[Yageo](#)

RFQ



RNC0603BTE38K8
 RES SMD 38.8KOHM 0.1% 1/16W 0603
[Stackpole Electronics Inc.](#)

RFQ



CRCW121068K0JNEAHP
 RES SMD 68K OHM 5% 3/4W 1210
[Vishay Dale](#)

RFQ



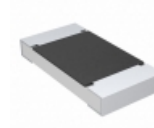
CRM2512-FX-12R1ELF
 RES SMD 12.1 OHM 1% 2W 2512
[Bourns Inc.](#)

RFQ



RNCF0402BKE90R9
 RES SMD 90.9 OHM 0.1% 1/16W 0402
[Stackpole Electronics Inc.](#)

RFQ



CRCW2010182RFKTF
 RES SMD 182 OHM 1% 3/4W 2010
[Vishay Dale](#)

RFQ

