

MSP430P325IPM

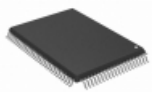

N/A
 IC MCU 16BIT 16KB OTP 64LQFP
 Lead free / RoHS Compliant
 Integrated Circuits (ICs)

Buy Now

We can supply MSP430P325IPM, use the request quote form to request MSP430P325IPM pirce, Datasheet PDF and lead time.Zeanoit.com is a professional electronic components distributor. With 3+ Million line items of available electronic components can ship in short lead-time, over 250 thousand part numbers of electronic components in stock for immediately delivery, which may include part number MSP430P325IPM.The price and lead time for MSP430P325IPM depending on the quantity required, availability and warehouse location.

Shopping Process
1
Confirm the product
2
submit the order
3
payment
4
wait for delivery
5
receive the goods
Specifications

Voltage - Supply (Vcc/Vdd):	2.5 V ~ 5.5 V
Supplier Device Package:	64-LQFP (10x10)
Speed:	8MHz
Series:	MSP430x3xx
RAM Size:	512 x 8
Program Memory Type:	OTP
Program Memory Size:	16KB (16K x 8)
Peripherals:	LCD, POR, WDT
Packaging:	Tray
Package / Case:	64-LQFP
Oscillator Type:	Internal
Operating Temperature:	-40°C ~ 85°C (TA)
Number of I/O:	14
EEPROM Size:	-
Data Converters:	A/D 6x14b
Core Size:	16-Bit
Core Processor:	MSP430
Connectivity:	UART/USART

Related products


MSP430P337IPJM
 IC MCU 16BIT 32KB OTP 100QFP
[N/A](#)

RFQ


MSP430P325IPG
 IC MCU 16BIT 16KB OTP 64QFP
[N/A](#)

RFQ


MSP430TCH5EPW
 IC MCU 16BIT
[N/A](#)

RFQ


MSP430P325AIPM
 IC MCU 16BIT 16KB OTP 64LQFP
[N/A](#)

RFQ

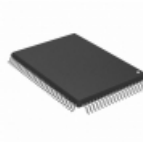

MSP430P325AIFN
 IC MCU 16BIT 16KB OTP 68PLCC
[N/A](#)

RFQ


MSP430TCH5EPWR
 IC MCU 16BIT HAPTICS 28-TSSOP
[N/A](#)

RFQ


MSP430P325IFN
 IC MCU 16BIT 16KB OTP 68PLCC
[N/A](#)

RFQ


MSP430P337AIPJMR
 IC MCU 16BIT 32KB OTP 100QFP
[N/A](#)

RFQ


MSP430P337AIPJM
 IC MCU 16BIT 32KB OTP 100QFP
[N/A](#)

RFQ


MSP430P325AIPG
 IC MCU 16BIT 16KB OTP 64QFP
[N/A](#)

RFQ
Guess You May Looking For


UCC2977PW
 IC TRANSFRM CNTLR 3-13.5V 8TSSOP

RFQ


S-80141BNMC-JG2T2G
 IC VOLT DETECTOR 4.1V SOT23-5
[SII Semiconductor Corporation](#)

RFQ

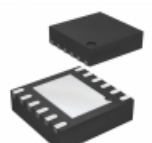

MAX6724UTRVD3+T
 IC SUPERVISOR MPU SOT23-6
[Maxim Integrated](#)

RFQ


ZR431FTA
 IC VREF SHUNT ADJ SOT23
[Diodes Incorporated](#)

RFQ


BD9E302EFJ-E2
 IC REG BUCK ADJ 3A SYNC
[Rohm Semiconductor](#)

RFQ


MIC2267YML-TR
 IC REG BUCK ADJ 0.5A SYNC 12MLF
[Microchip Technology](#)

RFQ


MIC4681-3.3BM
 IC REG BUCK 3.3V 1A 8SOIC
[Microchip Technology](#)

RFQ


MCP1826S-2502E/DB
 IC REG LDO 2.5V 1A SOT23-3
[Microchip Technology](#)

RFQ


TC2015-2.7VCTTR
 IC REG LDO 2.7V 0.1A SOT23-5
[Microchip Technology](#)

RFQ