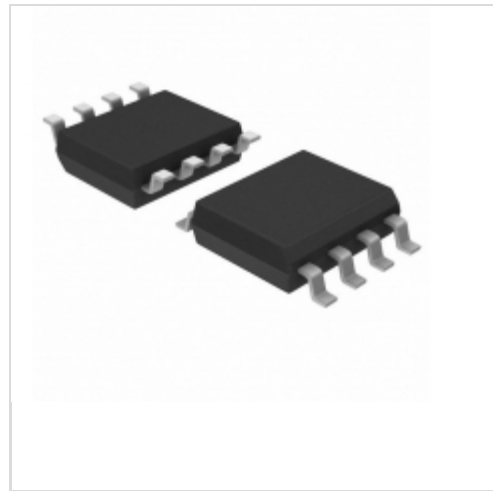


IS25LQ040B-JBLE-TR



ISSI (Integrated Silicon Solution, Inc.)

IC FLASH 4MBIT 104MHZ 8SOIC
Lead free / RoHS Compliant
Integrated Circuits (ICs)

[IS25LQ040B-JBLE-TR.pdf](#)

Buy Now

Out Stock

0 pcs

Minimum:1

Multiples:100

Manufacturer lead time 10 weeks

part#IS25LQ040B-JBLE-TR is available, see description of IS25LQ040B-JBLE-TR as below .

use the request quote form to request IS25LQ040B-JBLE-TR price and lead time. Buy Electronic Components at zeanoit.com .we are an independent distributor of electronic components with extensive inventory in stock.

The price and lead time for IS25LQ040B-JBLE-TR depending on the quantity required, availability and warehouse location.Contact us today and our sales team will send you quotation soon.

Email: sales@zeanoit.com

Shopping Process

1

Confirm the product

2

submit the order

3

payment

4

wait for delivery

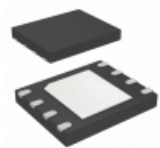
5

receive the goods

Specifications

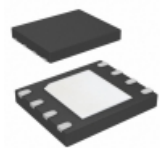
Voltage - Supply:	2.3 V ~ 3.6 V
Supplier Device Package:	8-SOIC
Speed:	104MHz
Series:	-
Packaging:	Tape & Reel (TR)
Package / Case:	8-SOIC (0.209", 5.30mm Width)
Operating Temperature:	-40°C ~ 105°C (TA)
Memory Type:	Non-Volatile
Memory Size:	4Mb (512K x 8)
Memory Format:	FLASH
Interface:	SPI Serial

Related products



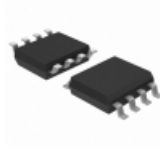
IS25LQ040B-JKLE-TR
IC FLASH 4MBIT 104MHZ 8WSOIC
[ISSI, Integrated Silicon Solution Inc](#)

RFQ



IS25LQ040B-JKLE
IC FLASH 4MBIT 104MHZ 8WSOIC
[ISSI, Integrated Silicon Solution Inc](#)

RFQ



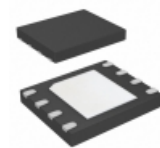
IS25LQ040B-JNLE-TR
IC FLASH 4MBIT 104MHZ 8SOIC
[ISSI, Integrated Silicon Solution Inc](#)

RFQ



IS25LQ040-JBLE
IC FLASH 4MBIT 104MHZ 8SOIC
[ISSI, Integrated Silicon Solution Inc](#)

RFQ



IS25LQ080-JKLE
IC FLASH 8MBIT 104MHZ 8WSOIC
[ISSI, Integrated Silicon Solution Inc](#)

RFQ



IS25LQ032B-JNLE
IC FLASH 32MBIT 104MHZ 8SOIC
[ISSI, Integrated Silicon Solution Inc](#)

RFQ



IS25LQ040B-JBLE
IC FLASH 4MBIT 104MHZ 8SOIC
[ISSI, Integrated Silicon Solution Inc](#)

RFQ



IS25LQ040-JBLE-TR
IC FLASH 4MBIT 104MHZ 8SOIC
[ISSI, Integrated Silicon Solution Inc](#)

RFQ



IS25LQ032B-JNLE-TR
IC FLASH 32MBIT 104MHZ 8SOIC
[ISSI, Integrated Silicon Solution Inc](#)

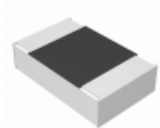
RFQ



IS25LQ040B-JNLE
IC FLASH 4MBIT 104MHZ 8SOIC
[ISSI, Integrated Silicon Solution Inc](#)

RFQ

Guess You May Looking For



ERA-6AEB2263V
RES SMD 226K OHM 0.1% 1/8W 0805
[Panasonic Electronic Components](#)

RFQ



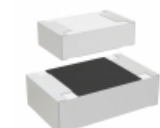
AC0201FR-0791RL
RES SMD 91 OHM 1% 1/20W 0201
[Yageo](#)

RFQ



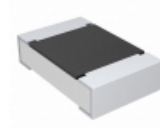
RE0603DRE0711RL
RES SMD 11 OHM 0.5% 1/10W 0603
[Yageo](#)

RFQ



CR0805-FX-1214ELF
RES SMD 1.21M OHM 1% 1/8W 0805
[Bourns Inc.](#)

RFQ



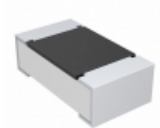
CRCW08057M32FKTA
RES SMD 7.32M OHM 1% 1/8W 0805
[Vishay Dale](#)

RFQ



RT0402FRD0743K2L
RES SMD 43.2K OHM 1% 1/16W 0402
[Yageo](#)

RFQ



CRCW06032K26FKEAHP
RES SMD 2.26K OHM 1% 1/4W 0603
[Vishay Dale](#)

RFQ



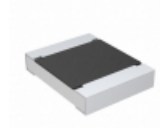
KTR10EZPJ184
RES SMD 180K OHM 5% 1/8W 0805
[Rohm Semiconductor](#)

RFQ



AT0603BRD071K5L
RES SMD 1.5K OHM 0.1% 1/10W 0603
[Yageo](#)

RFQ



CRCW1210649KFKTA
RES SMD 649K OHM 1% 1/2W 1210
[Vishay Dale](#)

RFQ