

AT28C17-15SI

Microchip Technology

IC EEPROM 16KBIT 150NS 28SOIC
 Contains lead / RoHS non-compliant
 Integrated Circuits (ICs)

[AT28C17-15SI.pdf](#)

Buy Now

We can supply AT28C17-15SI, use the request quote form to request AT28C17-15SI price and lead time. Zeano is a professional electronic components distributor. With 3+ Million line items of available electronic components can ship in short lead-time, over 250 thousand part numbers of electronic components in stock for immediately delivery, which may include part number AT28C17-15SI. The price and lead time for AT28C17-15SI depending on the quantity required and warehouse location. Contact us and our sales representative will provide you price. We look forward to work with you.

Shopping Process

1

Confirm the product

2

submit the order

3

payment

4

wait for delivery

5

receive the goods

Specifications

Voltage - Supply:	4.5 V ~ 5.5 V
Supplier Device Package:	28-SOIC
Speed:	150ns
Series:	-
Packaging:	Tube
Package / Case:	28-SOIC (0.295", 7.50mm Width)
Operating Temperature:	-40°C ~ 85°C (TC)
Memory Type:	Non-Volatile
Memory Size:	16Kb (2K x 8)
Memory Format:	EEPROM
Interface:	Parallel

Related products

AT28C17-20DI

in stock
[ATMEL](#)

RFQ


AT28C17-15SC

IC EEPROM 16KBIT 150NS 28SOIC
[Microchip Technology](#)

RFQ


AT28C17-15PI

IC EEPROM 16KBIT 150NS 28DIP
[Microchip Technology](#)

RFQ


AT28C17-20JI

IC EEPROM 16KBIT 200NS 32PLCC
[Microchip Technology](#)

RFQ


AT28C17-15SC

in stock
[ATMEL](#)

RFQ


AT28C17-20JC

in stock
[ATMEL](#)

RFQ


AT28C17-15PU

[AT](#)

RFQ


AT28C17-15PI

in stock
[ATMEL](#)

RFQ


AT28C17-20JC

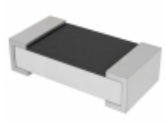
IC EEPROM 16KBIT 200NS 32PLCC
[Microchip Technology](#)

RFQ


AT28C17-15SI

in stock
[ATMEL](#)

RFQ

Guess You May Looking For

AC0603FR-07562RL

RES SMD 562 OHM 1% 1/10W 0603
[Yageo](#)

RFQ


RC0201FR-071R2L

RES SMD 1.2 OHM 1% 1/20W 0201
[Yageo](#)

RFQ


RE1206DRE075K11L

RES SMD 5.11K OHM 0.5% 1/4W 1206
[Yageo](#)

RFQ


RL0805FR-7W0R056L

RES SMD 0.056 OHM 1% 1/4W 0805
[Yageo](#)

RFQ


RT0603DRE0754R9L

RES SMD 54.9 OHM 0.5% 1/10W 0603
[Yageo](#)

RFQ


AA1206FR-073ML

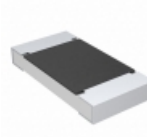
RES SMD 3M OHM 1% 1/4W 1206
[Yageo](#)

RFQ


RG1005P-4121-D-T10

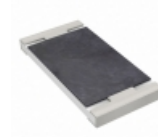
RES SMD 4.12KOHM 0.5% 1/16W 0402
[Susumu](#)

RFQ


CRCW2010680KFKEF

RES SMD 680K OHM 1% 3/4W 2010
[Vishay Dale](#)

RFQ


RC2512FK-07150KL

RES SMD 150K OHM 1% 1W 2512
[Yageo](#)

RFQ


RT0603CRE07205KL

RES SMD 205KOHM 0.25% 1/10W 0603
[Yageo](#)

RFQ