

## MAX16924ATM/V+T



**Maxim Integrated**

TRANSLATOR LL 16CH TFT AUTO TQFN

Lead free / RoHS Compliant

Integrated Circuits (ICs)

[MAX16924ATM/V+T.pdf](#)

**Buy Now**

Images are for reference only.

See Product Specifications for product details.

If you are interested to buy MAX16924ATM/V+T, Just Email us.

Sales@zeanoit.com

our sales team will reply you within 24 hours

### Shopping Process

**1**

Confirm the product

**2**

submit the order

**3**

payment

**4**

wait for delivery

**5**

receive the goods

### Specifications

**Voltage - Supply:** -

**Supplier Device Package:** -

**Series:** -

**Packaging:** -

**Package / Case:** -

**Operating Temperature:** -

**Mounting Type:** -

**Current - Supply:** -

**Applications:** -

### Related products



**MAX16927GTM/V+T**

[MAXIM](#)

RFQ

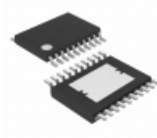


**MAX16922AUPG/V+**

IC DCDC CONV STPDN LDO 20TSSOP

[Maxim Integrated](#)

RFQ

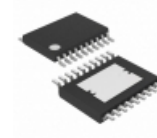


**MAX16922AUPG/V+T**

IC DCDC CONV STPDN LDO 20TSSOP

[Maxim Integrated](#)

RFQ



**MAX16922AUPH/V+T**

IC DCDC CONV STPDN LDO 20TSSOP

[Maxim Integrated](#)

RFQ

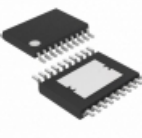


**MAX16924GTM/V+T**

TRANSLATOR LL 16CH TFT AUTO TQFN

[Maxim Integrated](#)

RFQ



**MAX16922AUPH/V+**

IC DCDC CONV STPDN LDO 20TSSOP

[Maxim Integrated](#)

RFQ



**MAX16924GTM/V+**

TRANSLATOR LL 16CH TFT AUTO TQFN

[Maxim Integrated](#)

RFQ



**MAX16924GGM/VY+**

TRANSLATOR LL 16CH TFT AUTO TQFN

[Maxim Integrated](#)

RFQ



**MAX16924GGM/VY+T**

TRANSLATOR LL 16CH TFT AUTO TQFN

[Maxim Integrated](#)

RFQ



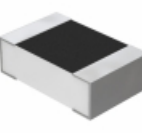
**MAX16924ATM/V+**

TRANSLATOR LL 16CH TFT AUTO TQFN

[Maxim Integrated](#)

RFQ

### Guess You May Looking For



**Y16243K90000T9R**

RES SMD 3.9K OHM 0.01% 1/5W 0805

[Vishay Foil Resistors \(Division of Vishay Preciso\)](#)

RFQ



**Y0794200R000Q0W**

RES SMD 200 OHM 0.0125W 0603

[Vishay Foil Resistors \(Division of Vishay Preciso\)](#)

RFQ



**CPSM055R000JE31**

RES SMD 5 OHM 5% 5W

[Vishay Dale](#)

RFQ

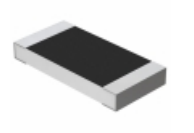


**Y174638R0000B9R**

RES SMD 38 OHM 0.1% 0.6W J LEAD

[Vishay Foil Resistors \(Division of Vishay Preciso\)](#)

RFQ



**Y16271K00000D13W**

RES SMD 1K OHM 0.5% 1/2W 2010

[Vishay Foil Resistors \(Division of Vishay Preciso\)](#)

RFQ



**9C06031A4322FKHFT**

RES SMD 43.2K OHM 1% 1/10W 0603

[Yageo](#)

RFQ



**9C04021A6203FLHF3**

RES SMD 620K OHM 1% 1/16W 0402

[Yageo](#)

RFQ



**9C08052A1101FKHFT**

RES SMD 1.1K OHM 1% 1/8W 0805

[Yageo](#)

RFQ



**9T12062A41R2CAHFT**

RES SMD 41.2 OHM 0.25% 1/8W 1206

[Yageo](#)

RFQ



**9T12062A3483BBHFT**

RES SMD 348K OHM 0.1% 1/8W 1206

[Yageo](#)

RFQ