

## FAN6961DY



**Fairchild/ON Semiconductor**

IC PFC CONTROLLER DCM 8DIP

Lead free / RoHS Compliant

Integrated Circuits (ICs)

[FAN6961DY.pdf](#)

**Buy Now**

We can supply Fairchild/ON Semiconductor FAN6961DY, use the request quote form to request FAN6961DY price, Fairchild/ON Semiconductor Datasheet PDF and lead time. Zeano.com is a professional electronic components distributor. With 3+ Million line items of available electronic components can ship in short lead-time, over 250 thousand part numbers of electronic components in stock for immediately delivery, which may include part number FAN6961DY. The price and lead time for FAN6961DY depending on the quantity required, availability and warehouse location.

### Shopping Process

**1**

Confirm the product

**2**

submit the order

**3**

payment

**4**

wait for delivery

**5**

receive the goods

### Specifications

<b>Voltage - Supply:</b>	13.5 V ~ 24.5 V
<b>Supplier Device Package:</b>	8-DIP
<b>Series:</b>	-
<b>Packaging:</b>	Tube
<b>Package / Case:</b>	8-DIP (0.300", 7.62mm)
<b>Operating Temperature:</b>	-40°C ~ 125°C
<b>Mounting Type:</b>	Through Hole
<b>Mode:</b>	Discontinuous Conduction (DCM)
<b>Frequency - Switching:</b>	60kHz
<b>Current - Startup:</b>	10µA

### Related products



**FAN6921MRMY**

IC CTRL PFC/FLYBACK 16SOIC

[Fairchild/ON Semiconductor](#)

RFQ



**FAN6921MLMY**

IC CTRL PFC/FLYBACK 16SOIC

[Fairchild/ON Semiconductor](#)

RFQ



**FAN6961SY**

IC PFC CONTROLLER DCM 8SOP

[Fairchild/ON Semiconductor](#)

RFQ



**FAN6961SYB**

[FAIRCHILD](#)

RFQ



**FAN6961SZ**

IC PFC CONTROLLER DCM 8SOP

[Fairchild/ON Semiconductor](#)

RFQ



**FAN6961S2B**

[FSC](#)

RFQ



**FAN6961DZ**

IC PFC CONTROLLER DCM 8DIP

[Fairchild/ON Semiconductor](#)

RFQ



**FAN6961**

[FSC](#)

RFQ



**FAN6921AAMLMY**

IC PWM PFC/QUASI-RES 16SOIC

[Fairchild/ON Semiconductor](#)

RFQ



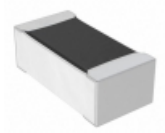
**FAN6921AMRMY**

IC PWM PFC/QUASI-RES 16SOIC

[Fairchild/ON Semiconductor](#)

RFQ

### Guess You May Looking For

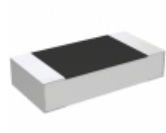


**RN73C1E499RBTG**

RES SMD 499 OHM 0.1% 1/16W 0402

[TE Connectivity Passive Product](#)

RFQ

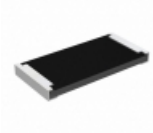


**RH73X2B10GKTN**

RES SMD 10G OHM 10% 1/4W 1206

[TE Connectivity Passive Product](#)

RFQ

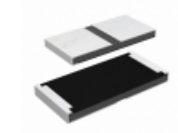


**RCP2512B1K50GS3**

RES SMD 1.5K OHM 2% 22W 2512

[Vishay Dale](#)

RFQ

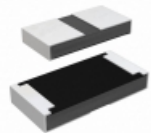


**RCP2512W22R0GS3**

RES SMD 22 OHM 2% 22W 2512

[Vishay Dale](#)

RFQ

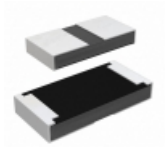


**RCP1206W270RGS2**

RES SMD 270 OHM 2% 11W 1206

[Vishay Dale](#)

RFQ



**RCP1206W390RJS2**

RES SMD 390 OHM 5% 11W 1206

[Vishay Dale](#)

RFQ



**PWR163S-25-R200J**

RES SMD 0.2 OHM 5% 25W DPAK

[Bourns Inc.](#)

RFQ

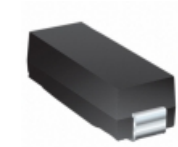


**RCP0603W390RJEC**

RES SMD 390 OHM 5% 3.9W 0603

[Vishay Dale](#)

RFQ



**PWR6327NR200JE**

RES SMD 0.2 OHM 5% 3W 6327

[Bourns Inc.](#)

RFQ



**M55342E06B15E0PT5**

RES SMD 15K OHM 1% 0.15W 0705

[Vishay Dale](#)

RFQ