

**TPS2211APWPG4**


N/A  
 IC PWR I/F SWTCH PC CARD20HTSSOP  
 Lead free / RoHS Compliant  
 Integrated Circuits (ICs)

**Buy Now**

**Out Stock**
**0 pcs**

Minimum:1

Multiples:1

Manufacturer lead time 10 weeks

- 1.Please confirm the Detail which include the part no.and the manufacturer of the products when ordering.
- 2.If you have bill of material(BOM) list require to quote.you could send to our email.
- 3.You can email us to change the order details before shipment.
- 4.Orders cannot be canceled after shipping the packages.

## Shopping Process


**Confirm the product**

**submit the order**

**payment**

**wait for delivery**

**receive the goods**

## Specifications

<b>Voltage - Supply (Vcc/Vdd):</b>	Not Required
<b>Voltage - Load:</b>	3.3V, 5V, 12V
<b>Switch Type:</b>	PCMCIA Switch
<b>Supplier Device Package:</b>	20-HTSSOP
<b>Series:</b>	-
<b>Rds On (Typ):</b>	70 mOhm
<b>Ratio - Input:Output:</b>	3:2
<b>Packaging:</b>	Tube
<b>Package / Case:</b>	20-TSSOP (0.173", 4.40mm Width) Exposed Pad
<b>Output Type:</b>	-
<b>Output Configuration:</b>	High Side
<b>Operating Temperature:</b>	-40°C ~ 85°C (TA)
<b>Number of Outputs:</b>	2
<b>Interface:</b>	Parallel
<b>Input Type:</b>	-
<b>Features:</b>	Status Flag
<b>Fault Protection:</b>	Current Limiting (Fixed), Over Temperature
<b>Current - Output (Max):</b>	1A

## Related products


**TPS2211APWR**

 IC PCMCIA POWER SWITCH 20TSSOP  
[N/A](#)

RFQ


**TPS2211AIDBRG4**

 IC PWR I/F SWITCH PC CARD 16SSOP  
[N/A](#)

RFQ


**TPS2211AIDBG4**

 IC PWR I/F SWITCH PC CARD 16SSOP  
[N/A](#)

RFQ


**TPS2211AIDBR**

 IC PWR I/F SWITCH PC CARD 16SSOP  
[N/A](#)

RFQ


**TPS2211ATDBR**

 in stock  
[N/A](#)

RFQ


**TPS2211APWPRG4**

 IC PWR I/F SWTCH PC CARD20HTSSOP  
[N/A](#)

RFQ


**TPS2211IDB**

 IC PWR I/F SWITCH PC CARD 16SSOP  
[N/A](#)

RFQ


**TPS2211APWPR**

 IC PWR I/F SWTCH PC CARD20HTSSOP  
[N/A](#)

RFQ


**TPS2211APW**

 IC PWR INTRFC SW PC CARD 20TSSOP  
[N/A](#)

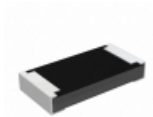
RFQ


**TPS2211APWP**

 IC PC CARD PWR SWITCH 20-HTSSOP  
[N/A](#)

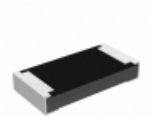
RFQ

## Guess You May Looking For


**RCP1206B30R0JS6**

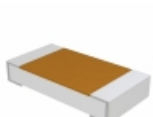
 RES SMD 30 OHM 5% 11W 1206  
[Vishay Dale](#)

RFQ


**RCP1206B180RJET**

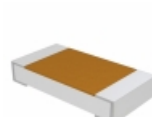
 RES SMD 180 OHM 5% 11W 1206  
[Vishay Dale](#)

RFQ


**D55342E07B8B66MBS**

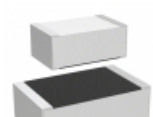
 RES SMD 8.66K OHM 0.1% 1/4W 1206  
[Vishay Dale](#)

RFQ


**D55342H07B750DRWS**

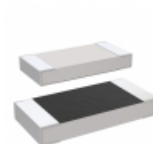
 RES SMD 750 OHM 1% 1/4W 1206  
[Vishay Dale](#)

RFQ


**M55342E06B35B7RWS**

 RES SMD 35.7KOHM 0.1% 0.15W 0805  
[Vishay Dale](#)

RFQ


**M55342E03B2B80RWS**

 RES SMD 2.8K OHM 0.1% 1/5W 1005  
[Vishay Dale](#)

RFQ


**M55342H04B3E40RWS**

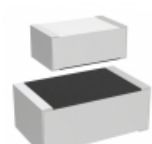
 RES SMD 3.4K OHM 1% 0.15W 1505  
[Vishay Dale](#)

RFQ


**M55342H02B120DPWS**

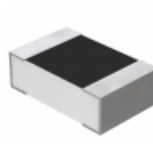
 RES SMD 120 OHM 1% 1/8W 0505  
[Vishay Dale](#)

RFQ


**M55342K06B287ARWS**

 RES SMD 287 OHM 0.1% 0.15W 0705  
[Vishay Dale](#)

RFQ


**Y40222K0000D0W**

 RES SMD 2K OHM 0.5% 1/5W 0805  
[Vishay Foil Resistors \(Division of Vishay Precisio](#)

RFQ

