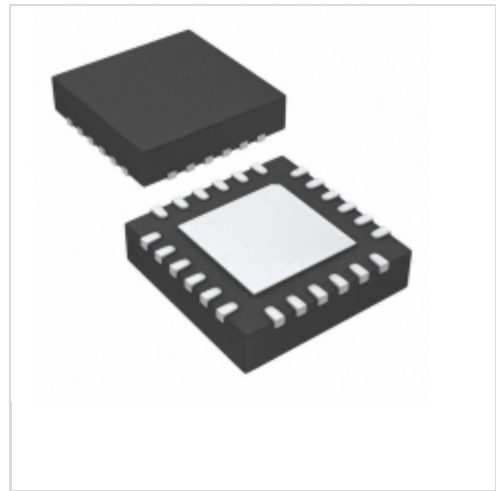


MAX78615+PPM/A03T

Maxim Integrated

IC ENERGY MEAS PROC 3PH TQFN

Lead free / RoHS Compliant

Integrated Circuits (ICs)

1.MAX78615+PPM/A03T.pdf

2.MAX78615+PPM/A03T.pdf

Buy Now

Images are for reference only.

See Product Specifications for product details.

If you are interested to buy MAX78615+PPM/A03T,Just Email us.

Sales@zeanoit.com

our sales team will reply you within 24 hours

Shopping Process
1
Confirm the product
2
submit the order
3
payment
4
wait for delivery
5
receive the goods
Specifications

Voltage - Supply:	3 V ~ 3.6 V
Voltage - I/O Low:	0.8V
Voltage - I/O High:	2V
Supplier Device Package:	24-TQFN (4x4)
Series:	-
Packaging:	Tape & Reel (TR)
Package / Case:	24-WFQFN Exposed Pad
Operating Temperature:	-40°C ~ 85°C
Mounting Type:	Surface Mount
Meter Type:	3 Phase
Measurement Error:	-
Input Impedance:	-
Current - Supply:	8.1mA

Related products

MAX78615PPM70EVK1#

KIT ENERGY MEASUREMENT MAX78700

[Maxim Integrated](#)

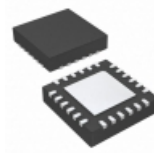
RFQ


MAX78615+PSU/A00

IC ENERGY MEAS PROC LMU TQFN

[Maxim Integrated](#)

RFQ


MAX78615+PPM/C01

IC ENERGY MEAS PROC 3PH TQFN

[Maxim Integrated](#)

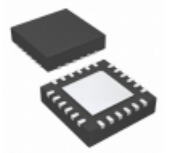
RFQ


MAX78615+PSU/A00T

IC ENERGY MEAS PROC LMU TQFN

[Maxim Integrated](#)

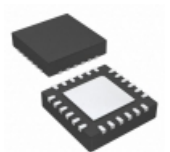
RFQ


MAX78615+PPM/A03

IC ENERGY MEAS PROC 3PH TQFN

[Maxim Integrated](#)

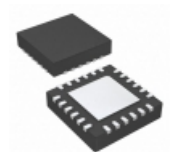
RFQ


MAX78615+LMU/A01T

IC ENERGY MEAS PROC LMU TQFN

[Maxim Integrated](#)

RFQ


MAX78615+PPM/C01T

IC ENERGY MEAS PROC 3PH TQFN

[Maxim Integrated](#)

RFQ


MAX78615+ATL/A02T

IC ENERGY MEASUREMENT TSSOP

[Maxim Integrated](#)

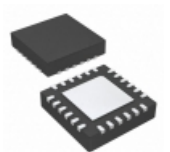
RFQ


MAX78615+ATL/A02

IC ENERGY MEASUREMENT TSSOP

[Maxim Integrated](#)

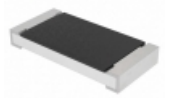
RFQ


MAX78615+LMU/A01

IC ENERGY MEAS PROC LMU TQFN

[Maxim Integrated](#)

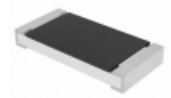
RFQ

Guess You May Looking For

CRCW20103K83FKEFHP

RES SMD 3.83K OHM 1% 1W 2010

[Vishay Dale](#)

RFQ


CRCW201093K1FKEFHP

RES SMD 93.1K OHM 1% 1W 2010

[Vishay Dale](#)

RFQ


RG3216N-2370-D-T5

RES SMD 237 OHM 0.5% 1/4W 1206

[Susumu](#)

RFQ


RNCF2512DKE30R9

RES SMD 30.9 OHM 0.5% 1W 2512

[Stackpole Electronics Inc.](#)

RFQ


RNCF2512DKE590K

RES SMD 590K OHM 0.5% 1/2W 2512

[Stackpole Electronics Inc.](#)

RFQ


RNCF2512DKE5R23

RES SMD 5.23 OHM 0.5% 1W 2512

[Stackpole Electronics Inc.](#)

RFQ


RNCF2512DKE750R

RES SMD 750 OHM 0.5% 3/4W 2512

[Stackpole Electronics Inc.](#)

RFQ


RT1206CRD074R75L

RES SMD 4.75 OHM 0.25% 1/4W 1206

[Yageo](#)

RFQ


RT0402CRB071KL

RES SMD 1K OHM 0.25% 1/16W 0402

[Yageo](#)

RFQ


RNCF1210DTC9K10

RES SMD 9.1K OHM 0.5% 1/3W 1210

[Stackpole Electronics Inc.](#)

RFQ