

STK672-640AN-E



AMI Semiconductor / ON Semiconductor

IC MOTOR DRIVER PAR SIP19

Lead free / RoHS Compliant

Integrated Circuits (ICs)

[STK672-640AN-E.pdf](#)

Buy Now

We can supply AMI Semiconductor / ON Semiconductor STK672-640AN-E, use the request quote form to request STK672-640AN-E price, AMI Semiconductor / ON Semiconductor Datasheet PDF and lead time. Zeanoit.com is a professional electronic components distributor. With 3+ Million line items of available electronic components can ship in short lead-time, over 250 thousand part numbers of electronic components in stock for immediately delivery, which may include part number STK672-640AN-E. The price and lead time for STK672-640AN-E depending on the quantity required, availability and warehouse location.

In Stock

13 pcs

Minimum:1

Multiples:100

Manufacturer lead time 10 weeks

PRICE

1 pcs	\$6.66
10 pcs	\$6.02
100 pcs	\$4.984
500 pcs	\$4.34
1000 pcs	\$3.78

Shopping Process

1

Confirm the product

2

submit the order

3

payment

4

wait for delivery

5

receive the goods

Specifications

Voltage - Supply:	4.75 V ~ 5.25 V
Voltage - Load:	0 V ~ 42 V
Technology:	Power MOSFET
Supplier Device Package:	19-SIP
Step Resolution:	1, 1/2
Series:	-
Packaging:	Tube
Package / Case:	19-SSIP Formed Leads
Output Configuration:	Half Bridge (2)
Operating Temperature:	0°C ~ 105°C (TC)
Mounting Type:	Through Hole
Motor Type - Stepper:	Unipolar
Motor Type - AC, DC:	-
Interface:	Parallel
Function:	Driver - Fully Integrated, Control and Power Stage
Current - Output:	3.3A
Applications:	General Purpose

Related products



STK672-640A-E

IC MOTOR DRIVER PAR 19SIP

[ON Semiconductor](#)

RFQ



STK672-732A-E

IC MOTOR DRIVER PAR 19SIP

[ON Semiconductor](#)

RFQ



STK672-642A-E

IC MOTOR DRIVER PAR 19SIP

[ON Semiconductor](#)

RFQ



STK672-642AN-E

IC MOTOR DRIVER PAR SIP19

[ON Semiconductor](#)

RFQ



STK672-640CN-E

IC MOTOR DRIVER PAR SIP19

[ON Semiconductor](#)

RFQ



STK672-631A-E

IC MOTOR DRIVER

[ON Semiconductor](#)

RFQ



STK672-632AN-E

IC MOTOR DRIVER PAR 19SIP

[ON Semiconductor](#)

RFQ



STK672-640C-E

IC MOTOR DRIVER PAR SIP19

[ON Semiconductor](#)

RFQ



STK672-632A-E

IC MOTOR DRIVER PAR 19SIP

[ON Semiconductor](#)

RFQ

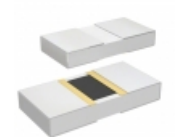


STK672-640A

[SANYO](#)

RFQ

Guess You May Looking For

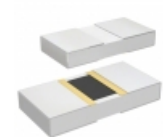


PHP00805H5760BST1

RES SMD 576 OHM 0.1% 5/8W 0805

[Vishay Thin Film](#)

RFQ



PHP00805H5111BST1

RES SMD 5.11K OHM 0.1% 5/8W 0805

[Vishay Thin Film](#)

RFQ

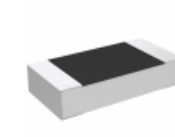


PWR2615WR150JE

RES SMD 0.15 OHM 5% 1W 2615

[Bourns Inc.](#)

RFQ

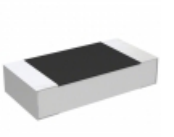


RP73D2B84R5BTG

RES SMD 84.5 OHM 0.1% 1/4W 1206

[TE Connectivity Passive Product](#)

RFQ



RP73D2B14K7BTG

RES SMD 14.7K OHM 0.1% 1/4W 1206

[TE Connectivity Passive Product](#)

RFQ

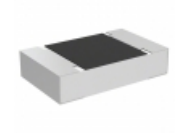


RCP0603W68R0JS3

RES SMD 68 OHM 5% 3.9W 0603

[Vishay Dale](#)

RFQ

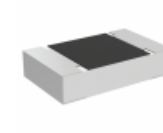


TNPU0805140RBZEN00

RES SMD 140 OHM 0.1% 1/8W 0805

[Vishay Dale](#)

RFQ

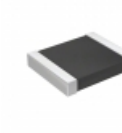


TNPU08055K90BZEN00

RES SMD 5.9K OHM 0.1% 1/8W 0805

[Vishay Dale](#)

RFQ

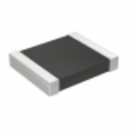


RT1210WRD07649RL

RES SMD 649 OHM 0.05% 1/4W 1210

[Yageo](#)

RFQ



RT1210WRD07412RL

RES SMD 412 OHM 0.05% 1/4W 1210

[Yageo](#)

RFQ

