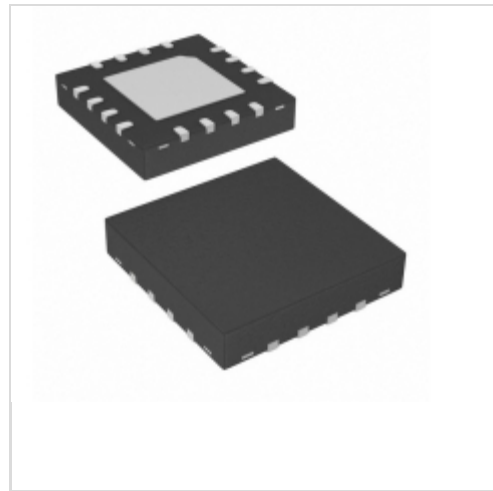


ISL6614CR

Intersil

IC DRIVER MOSF DUAL SYNC 16QFN
 Contains lead / RoHS non-compliant
 Integrated Circuits (ICs)

[ISL6614CR.pdf](#)
Buy Now

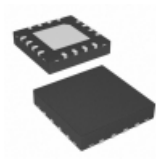
part#ISL6614CR is available, see description of ISL6614CR as below .
 use the request quote form to request ISL6614CR price and lead time.
 Buy Electronic Components at zeanoit.com .we are an independent distributor of
 electronic components with extensive inventory in stock.
 The price and lead time for ISL6614CR depending on the quantity required, availability
 and warehouse location.Contact us today and our sales team will send you quotation
 soon.
 Email: sales@zeanoit.com

Shopping Process
1
Confirm the product
2
submit the order
3
payment
4
wait for delivery
5
receive the goods
Specifications

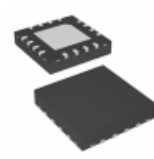
Voltage - Supply:	10.8 V ~ 13.2 V
Supplier Device Package:	16-QFN (4x4)
Series:	-
Rise / Fall Time (Typ):	26ns, 18ns
Packaging:	Tube
Package / Case:	16-VQFN Exposed Pad
Operating Temperature:	0°C ~ 125°C (TJ)
Number of Drivers:	4
Mounting Type:	Surface Mount
Logic Voltage - VIL, VIH:	-
Input Type:	Non-Inverting
High Side Voltage - Max (Bootstrap):	36V
Gate Type:	N-Channel MOSFET
Driven Configuration:	Half-Bridge
Current - Peak Output (Source, Sink):	1.25A, 2A
Channel Type:	Synchronous

Related products

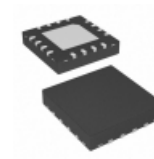

ISL6614CBZR5238
 IC DRVR DUAL SYNC BUCK 14-SOIC
[Intersil](#)

RFQ


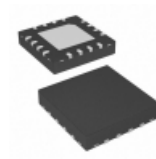
ISL6614CRZ-TR5238
 IC DRVR DUAL SYNC BUCK 16-QFN
[Intersil](#)

RFQ


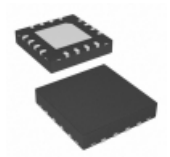
ISL6614CRZ
 IC DRIVER MOSF DUAL SYNC 16QFN
[Intersil](#)

RFQ


ISL6614CRZ-TR5214
 IC DRVR DUAL SYNC BUCK 16-QFN
[Intersil](#)

RFQ


ISL6614CRZ-T
 IC DRIVER DUAL SYNC BUCK 16-QFN
[Intersil](#)

RFQ


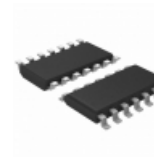
ISL6614CR-T
 IC DRIVER DUAL SYNC BUCK 16-QFN
[Intersil](#)

RFQ

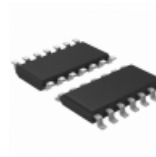

ISL6614CBZ-TR5238
 IC DRVR DUAL SYNC BUCK 14-SOIC
[Intersil](#)

RFQ

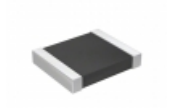

ISL6614CBZA
 IC DRIVER DUAL SYNC BUCK 14-SOIC
[Intersil](#)

RFQ


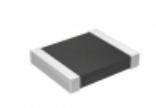
ISL6614CBZA-T
 IC DRIVER DUAL SYNC BUCK 14-SOIC
[Intersil](#)

RFQ


ISL6614CBZR5214
 IC DRVR DUAL SYNC BUCK 14-SOIC
[Intersil](#)

RFQ
Guess You May Looking For


RT1210CRE07560RL
 RES SMD 560 OHM 0.25% 1/4W 1210
[Yageo](#)

RFQ


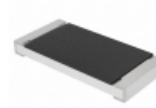
RT1210CRE0718K7L
 RES SMD 18.7KOHM 0.25% 1/4W 1210
[Yageo](#)

RFQ

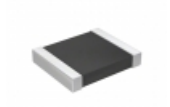

CSR1225JTR330
 RES SMD 0.33 OHM 5% 3W 2512 WIDE
[Stackpole Electronics Inc.](#)

RFQ

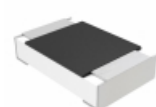

RG1608P-2430-W-T5
 RES SMD 243 OHM 0.05% 1/10W 0603
[Susumu](#)

RFQ


CRCW2512130KJNEGHP
 RES SMD 130K OHM 5% 1.5W 2512
[Vishay Dale](#)

RFQ


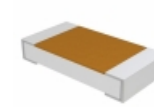
RT1210CRD07191KL
 RES SMD 191K OHM 0.25% 1/4W 1210
[Yageo](#)

RFQ


MCU08050D1300BP100
 RES SMD 130 OHM 0.1% 1/8W 0805
[Vishay Beyschlag](#)

RFQ


RG1608N-512-B-T5
 RES SMD 5.1K OHM 0.1% 1/10W 0603
[Susumu](#)

RFQ


TNPW12066K49BEEA
 RES SMD 6.49K OHM 0.1% 1/4W 1206
[Vishay Dale](#)

RFQ


RT1206BRC0756K2L
 RES SMD 56.2K OHM 0.1% 1/4W 1206
[Yageo](#)

RFQ