

## LNK6415D



### Power Integrations

IC SWITCHER CV/CC 4.5W 8SOIC  
Lead free / RoHS Compliant  
Integrated Circuits (ICs)

[LNK6415D.pdf](#)

**Buy Now**

**Out Stock**  
**0 pcs**  
Minimum:1  
Multiples:100  
Manufacturer lead time 10 weeks

We can supply LNK6415D, use the request quote form to request LNK6415D price and lead time. Zeano is a professional electronic components distributor. With 3+ Million line items of available electronic components can ship in short lead-time, over 250 thousand part numbers of electronic components in stock for immediately delivery, which may include part number LNK6415D. The price and lead time for LNK6415D depending on the quantity required and warehouse location. Contact us and our sales representative will provide you price. We look forward to work with you.

## Shopping Process

**1**

Confirm the product

**2**

submit the order

**3**

payment

**4**

wait for delivery

**5**

receive the goods

## Specifications

|                                    |  |
|------------------------------------|--|
| <b>Voltage - Supply (Vcc/Vdd):</b> | -  |
| <b>Voltage - Breakdown:</b>        | 725V   |
| <b>Topology:</b>                   | Flyback  |
| <b>Supplier Device Package:</b>    | 8-SO   |
| <b>Series:</b>                     | LinkSwitch™-3  |
| <b>Power (Watts):</b>              | 5.1W   |
| <b>Packaging:</b>                  | Tube   |
| <b>Package / Case:</b>             | 8-SOIC (0.154", 3.90mm Width) 7 leads                        |
| <b>Output Isolation:</b>           | Isolated   |
| <b>Operating Temperature:</b>      | -40°C ~ 150°C (TJ)   |
| <b>Mounting Type:</b>              | Surface Mount  |
| <b>Internal Switch(s):</b>         | Yes  |
| <b>Frequency - Switching:</b>      | Up to 85kHz  |
| <b>Fault Protection:</b>           | Current Limiting, Open Loop, Over Temperature, Short Circuit |
| <b>Duty Cycle:</b>                 | 55%  |
| <b>Control Features:</b>           | -  |

## Related products



**LNK6415D-TL**  
IC SWITCHER CV/CC 4.5W 8SOIC  
[Power Integrations](#)

RFQ



**LNK6416D**  
IC SWITCHER CV/CC 5.5W 8SOIC  
[Power Integrations](#)

RFQ



**LNK6408K-TL**  
IC LINKSWITCH CV/CC 10W 12ESOP  
[Power Integrations](#)

RFQ



**LNK6407K**  
IC LINKSWITCH CV/CC 7.5W 12ESOP  
[Power Integrations](#)

RFQ



**LNK6408E**  
IC LINKSWITCH CV/CC 10W 7ESIP  
[Power Integrations](#)

RFQ



**LNK6407K-TL**  
IC LINKSWITCH CV/CC 7.5W 12ESOP  
[Power Integrations](#)

RFQ



**LNK6416D-TL**  
IC SWITCHER CV/CC 5.5W 8SOIC  
[Power Integrations](#)

RFQ



**LNK6417D**  
IC LINKSWITCH CV/CC 7.5W 8SOIC  
[Power Integrations](#)

RFQ



**LNK6408K**  
IC LINKSWITCH CV/CC 10W 12ESOP  
[Power Integrations](#)

RFQ



**LNK6417D-TL**  
IC LINKSWITCH CV/CC 7.5W 8SOIC  
[Power Integrations](#)

RFQ

## Guess You May Looking For



**RNCF0402BTC165R**  
RES SMD 165 OHM 0.1% 1/16W 0402  
[Stackpole Electronics Inc.](#)

RFQ



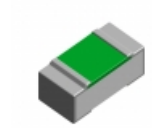
**ERJ-14RQJ5R1U**  
RES SMD 5.1 OHM 5% 1/4W 1210  
[Panasonic Electronic Components](#)

RFQ



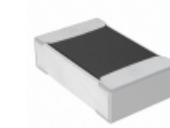
**RT0805CRC07357KL**  
RES SMD 357K OHM 0.25% 1/8W 0805  
[Yageo](#)

RFQ



**ERA-2HEC3300X**  
RES SMD 330 OHM 0.25% 1/16W 0402  
[Panasonic Electronic Components](#)

RFQ



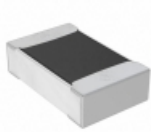
**RNCF0805BTE6K04**  
RES SMD 6.04K OHM 0.1% 1/8W 0805  
[Stackpole Electronics Inc.](#)

RFQ



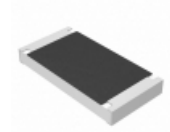
**AT0402CRD07348RL**  
RES SMD 348 OHM 0.25% 1/16W 0402  
[Yageo](#)

RFQ



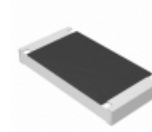
**RNCF0805BTE53R6**  
RES SMD 53.6 OHM 0.1% 1/8W 0805  
[Stackpole Electronics Inc.](#)

RFQ



**ERJ-S1DJ151U**  
RES SMD 150 OHM 5% 3/4W 2010  
[Panasonic Electronic Components](#)

RFQ



**ERJ-S1DJ914U**  
RES SMD 910K OHM 5% 3/4W 2010  
[Panasonic Electronic Components](#)

RFQ



**SR2512MK-071K8L**  
RES SMD 1.8K OHM 20% 1W 2512  
[Yageo](#)

RFQ