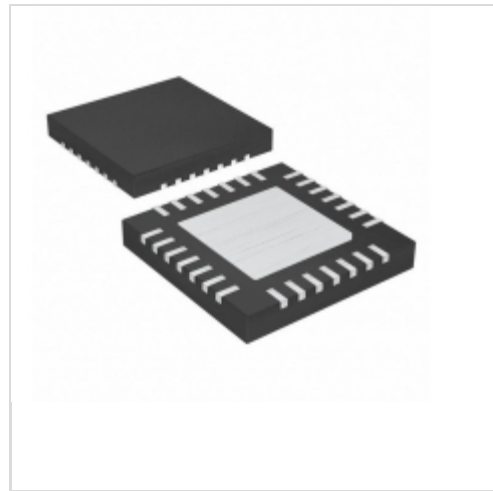


MAX17061AETI+



Maxim Integrated

IC LED DRIVER RGLTR DIM 28TQFN

Lead free / RoHS Compliant

Integrated Circuits (ICs)

1.MAX17061AETI+.pdf

2.MAX17061AETI+.pdf

Buy Now

Out Stock

0 pcs

Minimum:1

Multiples:100

Manufacturer lead time 10 weeks

We can supply Maxim Integrated MAX17061AETI+, use the request quote form to request MAX17061AETI+ price, Maxim Integrated Datasheet PDF and lead time. Zeanoit.com is a professional electronic components distributor. With 3+ Million line items of available electronic components can ship in short lead-time, over 250 thousand part numbers of electronic components in stock for immediately delivery, which may include part number MAX17061AETI+. The price and lead time for MAX17061AETI+ depending on the quantity required, availability and warehouse location.

Shopping Process

1

Confirm the product

2

submit the order

3

payment

4

wait for delivery

5

receive the goods

Specifications

Voltage - Supply (Min):	4.5V
Voltage - Supply (Max):	26V
Voltage - Output:	-
Type:	DC DC Regulator
Topology:	Step-Up (Boost)
Supplier Device Package:	28-TQFN (4x4)
Series:	-
Packaging:	Tube
Package / Case:	28-WFQFN Exposed Pad
Operating Temperature:	-40°C ~ 85°C (TA)
Number of Outputs:	8
Mounting Type:	Surface Mount
Internal Switch(s):	Yes
Frequency:	1MHz
Dimming:	PWM
Current - Output / Channel:	30mA
Applications:	Backlight

Related products



MAX1706

in stock

[MAXIM](#)

RFQ



MAX1705EEE-T

in stock

[MAXIM](#)

RFQ



MAX17061A

in stock

[MAXIM](#)

RFQ

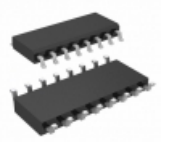


MAX17061

in stock

[MAXIM](#)

RFQ



MAX1705ESE+

IC REG BOOST ADJ 1A

[Maxim Integrated](#)

RFQ

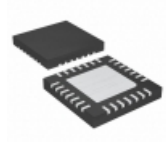


MAX17061ETI

in stock

[MAXIM](#)

RFQ

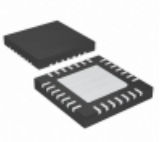


MAX17061ETI+

IC LED DRIVER RGLTR DIM 28TQFN

[Maxim Integrated](#)

RFQ



MAX17061ETI+T

IC LED DRIVER RGLTR DIM 28TQFN

[Maxim Integrated](#)

RFQ

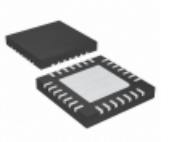


MAX17061AEVKIT+

EVAL KIT FOR MAX17061A

[Maxim Integrated](#)

RFQ



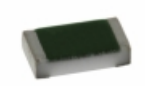
MAX17061AETI+T

IC LED DRIVER RGLTR DIM 28TQFN

[Maxim Integrated](#)

RFQ

Guess You May Looking For

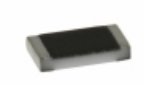


TNPW0603499RBEEN

RES SMD 499 OHM 0.1% 1/10W 0603

[Vishay Dale](#)

RFQ

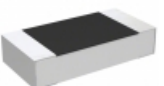


TNPW0805100RBEEN

RES SMD 100 OHM 0.1% 1/8W 0805

[Vishay Dale](#)

RFQ



RP73D2B13K3BTDF

RES SMD 13.3K OHM 0.1% 1/4W 1206

[TE Connectivity Passive Product](#)

RFQ

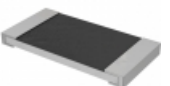


RG1608N-4421-P-T1

RES SMD 4.42K OHM 1/10W 0603

[Susumu](#)

RFQ



RHC2512FT732R

RES SMD 732 OHM 1% 2W 2512

[Stackpole Electronics Inc.](#)

RFQ



LVC25JR750EV

RES SMD 0.75 OHM 5% 1W 2512

[Ohmite](#)

RFQ



HRG3216P-3320-B-T1

RES SMD 332 OHM 0.1% 1W 1206

[Susumu](#)

RFQ

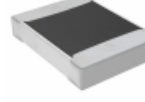


RG1005N-2052-W-T5

RES SMD 20.5K OHM 1/16W 0402

[Susumu](#)

RFQ

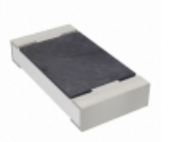


TNPW121020KOBETA

RES SMD 20K OHM 0.1% 1/3W 1210

[Vishay Dale](#)

RFQ



RT1206WRD0720RL

RES SMD 20 OHM 0.05% 1/4W 1206

[Yageo](#)

RFQ

