

**DRV8806PWPR**


N/A  
 IC MOTOR DRIVER SER 16HTSSOP  
 Lead free / RoHS Compliant  
 Integrated Circuits (ICs)

**Buy Now**

Part No. DRV8806PWPR Is this a common-used part? : Yes  
 Shipped from : HK or Singapore warehouse  
 Same model may have multiple batches, images only for reference.  
 ECAD Models : Contact us to get  
 Email:sales@zeanoit.com

**Out Stock**
**0 pcs**

Minimum:1

Multiples:1

Manufacturer lead time 10 weeks

## Shopping Process

**1**
**Confirm the product**
**2**
**submit the order**
**3**
**payment**
**4**
**wait for delivery**
**5**
**receive the goods**

## Specifications

<b>Voltage - Supply:</b>	8.2 V ~ 40 V
<b>Voltage - Load:</b>	8.2 V ~ 40 V
<b>Technology:</b>	Power MOSFET
<b>Supplier Device Package:</b>	16-HTSSOP
<b>Step Resolution:</b>	-
<b>Series:</b>	-
<b>Packaging:</b>	Tape & Reel (TR)
<b>Package / Case:</b>	16-TSSOP (0.173", 4.40mm Width) Exposed Pad
<b>Output Configuration:</b>	Low Side (4)
<b>Operating Temperature:</b>	-40°C ~ 150°C (TJ)
<b>Mounting Type:</b>	Surface Mount
<b>Motor Type - Stepper:</b>	Unipolar
<b>Motor Type - AC, DC:</b>	Brushed DC
<b>Interface:</b>	SPI
<b>Function:</b>	Driver - Fully Integrated, Control and Power Stage
<b>Current - Output:</b>	2A
<b>Applications:</b>	General Purpose

## Related products


**DRV8810PAP**

 IC MOTOR DRIVER SPI 64HTQFP  
 N/A

RFQ


**DRV8807DCAR**

TI

RFQ


**DRV8808DCA**

 IC MOTOR DRIVER SPI 48HTSSOP  
 N/A

RFQ


**DRV8805PWPR**

 IC MOTOR DRIVER PAR 16HTSSOP  
 N/A

RFQ


**DRV8809PAP**

 IC MOTOR DRIVER SPI 64HTQFP  
 N/A

RFQ


**DRV8808DCAR**

 IC MOTOR DRIVER SPI 48HTSSOP  
 N/A

RFQ


**DRV8805PWP**

 IC MOTOR DRIVER PAR 16HTSSOP  
 N/A

RFQ


**DRV8805EVM**

 EVAL MODULE FOR DRV8805  
 N/A

RFQ


**DRV8806PWP**

 IC MOTOR DRIVER SER 16HTSSOP  
 N/A

RFQ


**DRV8806EVM**

 EVAL MODULE FOR DRV8806  
 N/A

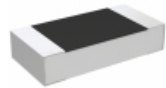
RFQ

## Guess You May Looking For


**RG1005V-1241-D-T10**

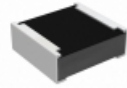
 RES SMD 1.24KOHM 0.5% 1/16W 0402  
 Susumu

RFQ


**RP73D2B562KBTG**

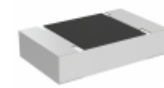
 RES SMD 562K OHM 0.1% 1/4W 1206  
 TE Connectivity Passive Product

RFQ


**RCP0505B75R0JTP**

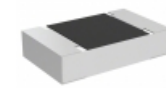
 RES SMD 75 OHM 5% 5W 0505  
 Vishay Dale

RFQ


**TNPU080569K8BZEN00**

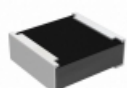
 RES SMD 69.8K OHM 0.1% 1/8W 0805  
 Vishay Dale

RFQ


**TNPU0805820RBZEN00**

 RES SMD 820 OHM 0.1% 1/8W 0805  
 Vishay Dale

RFQ


**RCP0505B430RGE**

 RES SMD 430 OHM 2% 5W 0505  
 Vishay Dale

RFQ


**RG1005V-2801-W-T5**

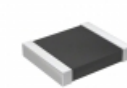
 RES SMD 2.8KOHM 0.05% 1/16W 0402  
 Susumu

RFQ


**RG1608V-2100-W-T1**

 RES SMD 210 OHM 0.05% 1/10W 0603  
 Susumu

RFQ


**RT1210WRD0753K6L**

 RES SMD 53.6KOHM 0.05% 1/4W 1210  
 Yageo

RFQ


**RG1608V-3831-W-T1**

 RES SMD 3.83K OHM 1/10W 0603  
 Susumu

RFQ

