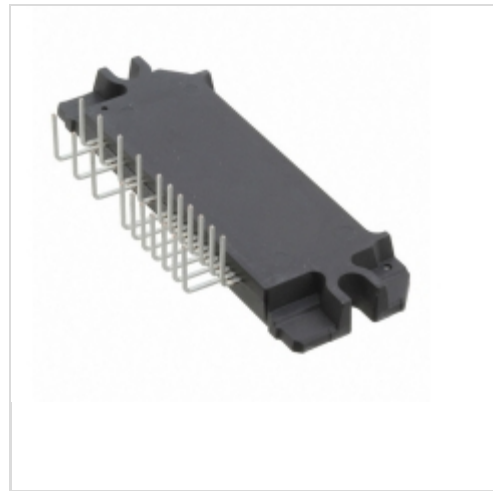


## STK554U362C-E



[AMI Semiconductor / ON Semiconductor](#)

IC BRIDGE DRIVER PAR 29SIP

Lead free / RoHS Compliant

Integrated Circuits (ICs)

[STK554U362C-E.pdf](#)

**Buy Now**

**Out Stock**

**0 pcs**

Minimum:1

Multiples:100

Manufacturer lead time 10 weeks

We can supply AMI Semiconductor / ON Semiconductor STK554U362C-E, use the request quote form to request STK554U362C-E price, AMI Semiconductor / ON Semiconductor Datasheet PDF and lead time. Zeanoit.com is a professional electronic components distributor. With 3+ Million line items of available electronic components can ship in short lead-time, over 250 thousand part numbers of electronic components in stock for immediately delivery, which may include part number STK554U362C-E. The price and lead time for STK554U362C-E depending on the quantity required, availability and warehouse location.

### Shopping Process

**1**

Confirm the product

**2**

submit the order

**3**

payment

**4**

wait for delivery

**5**

receive the goods

### Specifications

<b>Voltage - Supply:</b>	12.5 V ~ 17.5 V
<b>Voltage - Load:</b>	450V (Max)
<b>Technology:</b>	IGBT
<b>Supplier Device Package:</b>	21-SIP
<b>Series:</b>	-
<b>Rds On (Typ):</b>	-
<b>Packaging:</b>	Bulk
<b>Package / Case:</b>	29-SSIP Module, 21 Leads, Formed Leads
<b>Output Configuration:</b>	Half Bridge (3)
<b>Operating Temperature:</b>	-40°C ~ 150°C (TJ)
<b>Mounting Type:</b>	Through Hole
<b>Load Type:</b>	Inductive
<b>Interface:</b>	Logic
<b>Features:</b>	Bootstrap Circuit, Status Flag
<b>Fault Protection:</b>	Current Limiting, Shoot-Through, UVLO
<b>Current - Peak Output:</b>	20A
<b>Current - Output / Channel:</b>	10A
<b>Applications:</b>	AC Motors

### Related products



**STK554U362A-E**

IC BRIDGE DRIVER PAR 29SIP

[ON Semiconductor](#)

RFQ



**STK554-390A-E**

IC MOTOR INVERTER 3PHASE

[ON Semiconductor](#)

RFQ



**STK554U360B-E**

IC MOTOR DRIVER

[ON Semiconductor](#)

RFQ



**STK554U392AGEVB**

EVAL KIT 3 PHASE HYBRID INVERTER

[ON Semiconductor](#)

RFQ



**STK554U362AGEVB**

EVAL KIT 3 PHASE HYBRID INVERTER

[ON Semiconductor](#)

RFQ



**STK554U392A-E**

IC BRIDGE DRIVER PAR 29SIP

[ON Semiconductor](#)

RFQ



**STK554U361A-E**

IC MOTOR DRIVER

[ON Semiconductor](#)

RFQ



**STK554U364A-E**

IC MOTOR DRIVER

[ON Semiconductor](#)

RFQ



**STK554U394A-E**

IC MOTOR DRIVER

[ON Semiconductor](#)

RFQ



**STK554U391A-E**

IC MOTOR DRIVER

[ON Semiconductor](#)

RFQ

### Guess You May Looking For



**SMF32K7JT**

RES SMD 2.7K OHM 5% 3W 4122

[TE Connectivity Passive Product](#)

RFQ



**RG1005N-97R6-D-T10**

RES SMD 97.6 OHM 0.5% 1/16W 0402

[Susumu](#)

RFQ



**RG1005N-2100-D-T10**

RES SMD 210 OHM 0.5% 1/16W 0402

[Susumu](#)

RFQ



**RNCF2010BTC30R0**

RES SMD 30 OHM 0.1% 1/3W 2010

[Stackpole Electronics Inc.](#)

RFQ



**RNCF2010BTC412R**

RES SMD 412 OHM 0.1% 1/3W 2010

[Stackpole Electronics Inc.](#)

RFQ

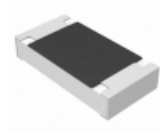


**RNCF2010BTC24K0**

RES SMD 24K OHM 0.1% 1/3W 2010

[Stackpole Electronics Inc.](#)

RFQ

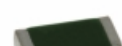


**PE1206DRF070R047L**

RES SMD 0.047 OHM 0.5% 1/4W 1206

[Yageo](#)

RFQ



**TNPW060339R2BEEA**

RES SMD 39.2 OHM 0.1% 1/10W 0603

[Vishay Dale](#)

RFQ



**RNCF2010BTC475K**

RES SMD 475K OHM 0.1% 1/3W 2010

[Stackpole Electronics Inc.](#)

RFQ



**AA2512FK-071K1L**

RES SMD 1.1K OHM 1% 1W 2512

[Yageo](#)

RFQ

