

MAX6324AUT44-T

Maxim Integrated

IC MPU/WATCHDG 1.5-10MS SOT23-6

Contains lead / RoHS non-compliant

Integrated Circuits (ICs)

1.MAX6324AUT44-T.pdf

2.MAX6324AUT44-T.pdf

part#MAX6324AUT44-T is available, see description of MAX6324AUT44-T as below . use the request quote form to request MAX6324AUT44-T price and lead time. Buy Electronic Components at zeanoit.com .we are an independent distributor of electronic components with extensive inventory in stock. The price and lead time for MAX6324AUT44-T depending on the quantity required, availability and warehouse location.Contact us today and our sales team will send you quotation soon. Email: sales@zeanoit.com

Shopping Process

1

Confirm the product

2

submit the order

3

payment

4

wait for delivery

5

receive the goods

Specifications

Voltage - Threshold:	4.38V
Type:	Simple Reset/Power-On Reset
Supplier Device Package:	SOT-23-6
Series:	-
Reset Timeout:	100 ms Minimum
Reset:	Active Low
Packaging:	Tape & Reel (TR)
Package / Case:	SOT-23-6
Output:	Open Drain or Open Collector
Operating Temperature:	-40°C ~ 125°C (TA)
Number of Voltages Monitored:	1
Mounting Type:	Surface Mount

Related products


MAX6324AUT23-T
 IC MPU/WATCHDG 1.5-10MS SOT23-6
[Maxim Integrated](#)

RFQ


MAX6324AUT46-T
 IC MPU/WATCHDG 1.5-10MS SOT23-6
[Maxim Integrated](#)

RFQ


MAX6324BUT29-T
 IC MPU/WATCHDG 15-100MS SOT23-6
[Maxim Integrated](#)

RFQ


MAX6324AUT26-T
 IC MPU/WATCHDG 1.5-10MS SOT23-6
[Maxim Integrated](#)

RFQ


MAX6324BUT31+T
 IC MPU/WATCHDG 15-100MS SOT23-6
[Maxim Integrated](#)

RFQ


MAX6324BUT29+T
[MAXIM](#)

RFQ


MAX6324BUT46+T
 IC SUPERVISOR 4.63V SOT23-6
[Maxim Integrated](#)

RFQ


MAX6324AUT29+T
 IC SUPERVISOR 2.93V SOT23-6
[Maxim Integrated](#)

RFQ

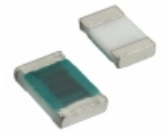

MAX6324AUT31+T
 IC MPU/RESET CIRC 3.08V SOT23-6
[Maxim Integrated](#)

RFQ


MAX6323_UT__-T
 in stock
[MAXIM](#)

RFQ

Guess You May Looking For


RP1005S-5R6-J
 RES SMD 5.6 OHM 5% 1/6W 0402
[Susumu](#)

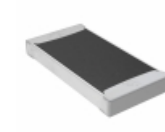
RFQ


RG1608N-2740-B-T1
 RES SMD 274 OHM 0.1% 1/10W 0603
[Susumu](#)

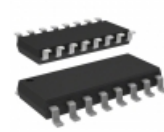
RFQ


RG2012N-161-P-T1
 RES SMD 160 OHM 0.02% 1/8W 0805
[Susumu](#)

RFQ


TNPW20103K57BEEF
 RES SMD 3.57K OHM 0.1% 0.4W 2010
[Vishay Dale](#)

RFQ


4816P-T01-392LF
 RES ARRAY 8 RES 3.9K OHM 16SOIC
[Bourns Inc.](#)

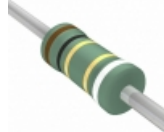
RFQ


YC164-JR-075K1L
 RES ARRAY 4 RES 5.1K OHM 1206
[Yageo](#)

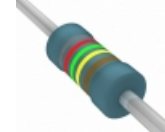
RFQ


743C083513JPTR
 RES ARRAY 4 RES 51K OHM 2008
[CTS Resistor Products](#)

RFQ


FKN50SJR-52-1R
 RES 1 OHM 1/2W 5% AXIAL
[Yageo](#)

RFQ


MBA02040C8254FRP00
 RES 8.25M OHM 0.4W 1% AXIAL
[Vishay BC Components](#)

RFQ


CMF202K7000JKR6
 RES 2.7K OHM 1W 5% AXIAL
[Vishay Dale](#)

RFQ