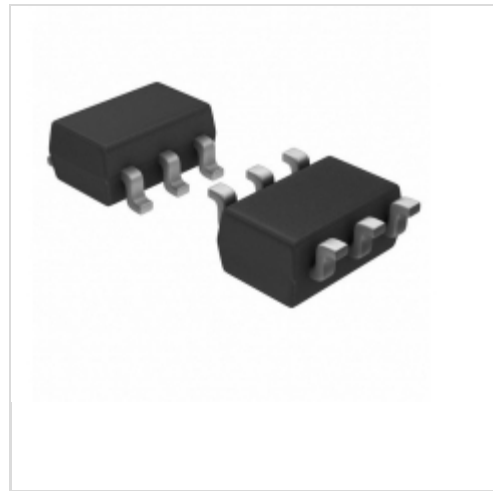


MAX6323GUT31-T

[Maxim Integrated](#)

IC MPU/WATCHDG 39-82MS SOT23-6

Contains lead / RoHS non-compliant

Integrated Circuits (ICs)

[1.MAX6323GUT31-T.pdf](#)
[2.MAX6323GUT31-T.pdf](#)
Buy Now

We can supply Maxim Integrated MAX6323GUT31-T, use the request quote form to request MAX6323GUT31-T price, Maxim Integrated Datasheet PDF and lead time. Zeanoit.com is a professional electronic components distributor. With 3+ Million line items of available electronic components can ship in short lead-time, over 250 thousand part numbers of electronic components in stock for immediately delivery, which may include part number MAX6323GUT31-T. The price and lead time for MAX6323GUT31-T depending on the quantity required, availability and warehouse location.

Shopping Process

1
Confirm the product
2
submit the order
3
payment
4
wait for delivery
5
receive the goods

Specifications

| | |
|--------------------------------------|-----------------------------|
| Voltage - Threshold: | 3.08V |
| Type: | Simple Reset/Power-On Reset |
| Supplier Device Package: | SOT-23-6 |
| Series: | - |
| Reset Timeout: | 100 ms Minimum |
| Reset: | Active Low |
| Packaging: | Tape & Reel (TR) |
| Package / Case: | SOT-23-6 |
| Output: | Push-Pull, Totem Pole |
| Operating Temperature: | -40°C ~ 125°C (TA) |
| Number of Voltages Monitored: | 1 |
| Mounting Type: | Surface Mount |

Related products


MAX6323HUT23-T
 IC MPU/WATCHDG 719-1.3MS SOT23-6
[Maxim Integrated](#)

RFQ


MAX6323GUT29-T
 IC MPU/WATCHDG 39-82MS SOT23-6
[Maxim Integrated](#)

RFQ


MAX6323GUT23-T
 IC MPU/WATCHDG 39-82MS SOT23-6
[Maxim Integrated](#)

RFQ


MAX6323GUT46+T
 IC SUPERVISOR 4.63V SOT23-6
[Maxim Integrated](#)

RFQ


MAX6323GUT44-T
 IC MPU/WATCHDG 39-82MS SOT23-6
[Maxim Integrated](#)

RFQ


MAX6323FUT44-T
 IC MPU/WATCHDG 23-47MS SOT23-6
[Maxim Integrated](#)

RFQ


MAX6323FUT46-T
 IC MPU/WATCHDG 23-47MS SOT23-6
[Maxim Integrated](#)

RFQ


MAX6323GUT26-T
 IC MPU/WATCHDG 39-82MS SOT23-6
[Maxim Integrated](#)

RFQ


MAX6323HUT26-T
 IC MPU/WATCHDG 719-1.3MS SOT23-6
[Maxim Integrated](#)

RFQ


MAX6323HUT29-T
 IC MPU/WATCHDG 719-1.3MS SOT23-6
[Maxim Integrated](#)

RFQ

Guess You May Looking For


RG1005N-1432-C-T10
 RES SMD 14.3K OHM 1/16W 0402
[Susumu](#)

RFQ


TNPW2512174RBEEY
 RES SMD 174 OHM 0.1% 1/2W 2512
[Vishay Dale](#)

RFQ


MNR14ERAPJ470
 RES ARRAY 4 RES 47 OHM 1206
[Rohm Semiconductor](#)

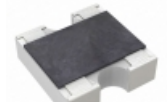
RFQ


CRA04S0831K00JTD
 RES ARRAY 4 RES 1K OHM 0804
[Vishay Dale](#)

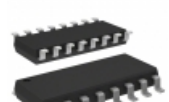
RFQ


TC124-FR-0786R6L
 RES ARRAY 4 RES 86.6 OHM 0804
[Yageo](#)

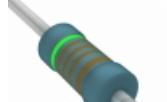
RFQ


YC162-FR-072K15L
 RES ARRAY 2 RES 2.15K OHM 0606
[Yageo](#)

RFQ


4816P-2-361LF
 RES ARRAY 15 RES 360 OHM 16SOIC
[Boums Inc.](#)

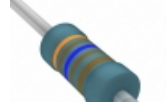
RFQ


MRS25000C5111FRP00
 RES 5.11K OHM 0.6W 1% AXIAL
[Vishay BC Components](#)

RFQ


ON1315E-R58
 RES 130 OHM 2W 5% AXIAL
[Ohmite](#)

RFQ


MRS25000C3168FC100
 RES 3.16 OHM 0.6W 1% AXIAL
[Vishay BC Components](#)

RFQ