

L6474H



STMicroelectronics

IC MOTOR DRIVER SPI 28HTSSOP

Lead free / RoHS Compliant

Integrated Circuits (ICs)

[L6474H.pdf](#)

Buy Now

Images are for reference only.

See Product Specifications for product details.

If you are interested to buy L6474H,Just Email us.

Sales@zeanoit.com

our sales team will reply you within 24 hours

In Stock

752 pcs

Minimum:1

Multiples:100

Manufacturer lead time 10 weeks

PRICE

1 pcs	\$5.62
10 pcs	\$5.046
100 pcs	\$4.134
500 pcs	\$3.519
1000 pcs	\$2.968

Shopping Process

1

Confirm the product

2

submit the order

3

payment

4

wait for delivery

5

receive the goods

Specifications

Voltage - Supply:	3.3V, 5V
Voltage - Load:	8 V ~ 45 V
Technology:	DMOS
Supplier Device Package:	28-HTSSOP
Step Resolution:	1 ~ 1/16
Series:	easySPIN
Packaging:	Tube
Package / Case:	28-TSSOP (0.173", 4.40mm Width) Exposed Pad
Output Configuration:	Half Bridge (4)
Operating Temperature:	-40°C ~ 150°C (TJ)
Mounting Type:	Surface Mount
Motor Type - Stepper:	Bipolar
Motor Type - AC, DC:	-
Interface:	SPI
Function:	Driver - Fully Integrated, Control and Power Stage
Current - Output:	3A
Applications:	General Purpose

Related products

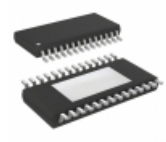


L6474PD

IC MOTOR DRIVER SPI 36POWERSO

[STMicroelectronics](#)

RFQ



L6472HTR

IC MOTOR DRIVER SPI 28HTSSOP

[STMicroelectronics](#)

RFQ



L64734C-45

[LSI](#)

RFQ



L64734

[LSI](#)

RFQ

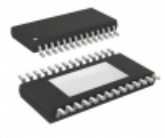


L6474PDTR

IC MOTOR DRIVER SPI 36POWERSO

[STMicroelectronics](#)

RFQ



L6474HTR

IC MOTOR DRIVER SPI 28HTSSOP

[STMicroelectronics](#)

RFQ



L6480HTR

IC MOTOR CONTROLLER SPI 38HTSSOP

[STMicroelectronics](#)

RFQ



L6480H

IC MOTOR CONTROLLER SPI 38HTSSOP

[STMicroelectronics](#)

RFQ



L6472PD

IC MOTOR DRIVER SPI 36POWERSO

[STMicroelectronics](#)

RFQ



L6472PDTR

IC MOTOR DRIVER SPI 36POWERSO

[STMicroelectronics](#)

RFQ

Guess You May Looking For



RP73D1J2K74BTG

RES SMD 2.74KOHM 0.1% 1/10W 0603

[TE Connectivity Passive Product](#)

RFQ



RP73D1J3K65BTG

RES SMD 3.65KOHM 0.1% 1/10W 0603

[TE Connectivity Passive Product](#)

RFQ

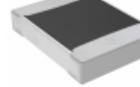


RG1608V-1961-B-T5

RES SMD 1.96KOHM 0.1% 1/10W 0603

[Susumu](#)

RFQ



TNPW12101M50BEEN

RES SMD 1.5M OHM 0.1% 1/3W 1210

[Vishay Dale](#)

RFQ

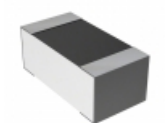


RG1005V-2551-B-T5

RES SMD 2.55KOHM 0.1% 1/16W 0402

[Susumu](#)

RFQ

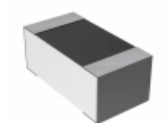


RN73C1J5K36BTG

RES SMD 5.36KOHM 0.1% 1/16W 0603

[TE Connectivity Passive Product](#)

RFQ

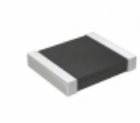


RN73C1J12R4BTG

RES SMD 12.4 OHM 0.1% 1/16W 0603

[TE Connectivity Passive Product](#)

RFQ

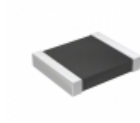


RT1210WRD0764R9L

RES SMD 64.9 OHM 0.05% 1/4W 1210

[Yageo](#)

RFQ

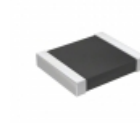


RT1210WRD071K87L

RES SMD 1.87KOHM 0.05% 1/4W 1210

[Yageo](#)

RFQ



RT1210WRD07267RL

RES SMD 267 OHM 0.05% 1/4W 1210

[Yageo](#)

RFQ

