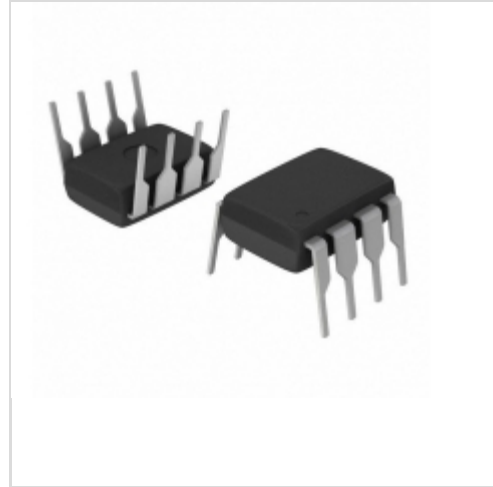


AT24C08-10PI-1.8



Microchip Technology

IC EEPROM 8KBIT 400KHZ 8DIP
 Contains lead / RoHS non-compliant
 Integrated Circuits (ICs)

[AT24C08-10PI-1.8.pdf](#)

Buy Now

We can supply AT24C08-10PI-1.8, use the request quote form to request AT24C08-10PI-1.8 price and lead time. Zeano is a professional electronic components distributor. With 3+ Million line items of available electronic components can ship in short lead-time, over 250 thousand part numbers of electronic components in stock for immediately delivery, which may include part number AT24C08-10PI-1.8. The price and lead time for AT24C08-10PI-1.8 depending on the quantity required and warehouse location. Contact us and our sales representative will provide you price. We look forward to work with you.

Shopping Process

1

Confirm the product

2

submit the order

3

payment

4

wait for delivery

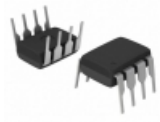
5

receive the goods

Specifications

Voltage - Supply:	1.8 V ~ 5.5 V
Supplier Device Package:	8-PDIP
Speed:	400kHz
Series:	-
Packaging:	Tube
Package / Case:	8-DIP (0.300", 7.62mm)
Operating Temperature:	-40°C ~ 85°C (TA)
Memory Type:	Non-Volatile
Memory Size:	8Kb (1K x 8)
Memory Format:	EEPROM
Interface:	I ² C, 2-Wire Serial

Related products



AT24C08-10PI-2.7
 IC EEPROM 8KBIT 400KHZ 8DIP
[Microchip Technology](#)

RFQ



AT24C08-10PC-2.7
 in stock
[ATMEL](#)

RFQ



AT24C08-10PI
 in stock
[ATMEL](#)

RFQ



AT24C08-10PC-2.7
 IC EEPROM 8KBIT 400KHZ 8DIP
[Microchip Technology](#)

RFQ



AT24C08-10PI-2.5
 IC EEPROM 8KBIT 400KHZ 8DIP
[Microchip Technology](#)

RFQ



AT24C08-10PC-2.5
 in stock
[ATMEL](#)

RFQ



AT24C08-10PU-2.7
 in stock
[ATMEL](#)

RFQ



AT24C08-10PI-2.5
 in stock
[ATMEL](#)

RFQ



AT24C08-10PI
 IC EEPROM 8KBIT 400KHZ 8DIP
[Microchip Technology](#)

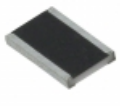
RFQ



AT24C08-10SC
 in stock
[ATMEL](#)

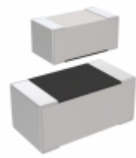
RFQ

Guess You May Looking For



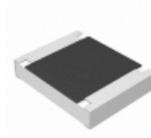
RCL121810K0FKEK
 RES SMD 10K OHM 1W 1812 WIDE
[Vishay Dale](#)

RFQ



RC0201JR-0713KL
 RES SMD 13K OHM 5% 1/20W 0201
[Yageo](#)

RFQ



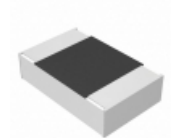
ERJ-14NF1781U
 RES SMD 1.78K OHM 1% 1/2W 1210
[Panasonic Electronic Components](#)

RFQ



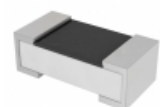
RT0402DRE0747KL
 RES SMD 47K OHM 0.5% 1/16W 0402
[Yageo](#)

RFQ



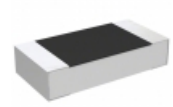
ERA-6AEB304V
 RES SMD 300K OHM 0.1% 1/8W 0805
[Panasonic Electronic Components](#)

RFQ



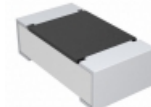
AC0402FR-075K11L
 RES SMD 5.11K OHM 1% 1/16W 0402
[Yageo](#)

RFQ



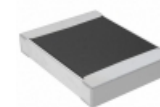
CRGH1206F806R
 RES SMD 806 OHM 1% 1/2W 1206
[TE Connectivity Passive Product](#)

RFQ



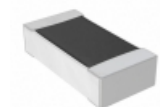
CRCW0603806RFKTA
 RES SMD 806 OHM 1% 1/10W 0603
[Vishay Dale](#)

RFQ



RMCF1210FT1K91
 RES SMD 1.91K OHM 1% 1/3W 1210
[Stackpole Electronics Inc.](#)

RFQ



RNCF0603DKE162R
 RES SMD 162 OHM 0.5% 1/10W 0603
[Stackpole Electronics Inc.](#)

RFQ