

## NCP1011AP065G



AMI Semiconductor / ON Semiconductor

IC OFFLINE SWIT SMPS CM OVP 7DIP

Lead free / RoHS Compliant

Integrated Circuits (ICs)

[NCP1011AP065G.pdf](#)

**Buy Now**

part#NCP1011AP065G is available, see description of NCP1011AP065G as below .

use the request quote form to request NCP1011AP065G price and lead time.

Buy Electronic Components at zeanoit.com .we are an independent distributor of electronic components with extensive inventory in stock.

The price and lead time for NCP1011AP065G depending on the quantity required, availability and warehouse location.Contact us today and our sales team will send you quotation soon.

Email: sales@zeanoit.com

**Out Stock**

**0 pcs**

Minimum:1

Multiples:100

Manufacturer lead time 10 weeks

### Shopping Process

**1**

Confirm the product

**2**

submit the order

**3**

payment

**4**

wait for delivery

**5**

receive the goods

### Specifications

<b>Voltage - Supply (Vcc/Vdd):</b>	8.5 V ~ 10 V
<b>Voltage - Breakdown:</b>	700V
<b>Topology:</b>	Flyback
<b>Supplier Device Package:</b>	7-PDIP
<b>Series:</b>	-
<b>Power (Watts):</b>	19W
<b>Packaging:</b>	Tube
<b>Package / Case:</b>	8-DIP (0.300", 7.62mm), 7 Leads
<b>Output Isolation:</b>	Isolated
<b>Operating Temperature:</b>	-40°C ~ 150°C (TJ)
<b>Mounting Type:</b>	Through Hole
<b>Internal Switch(s):</b>	Yes
<b>Frequency - Switching:</b>	65kHz
<b>Fault Protection:</b>	Over Load, Over Temperature, Over Voltage
<b>Duty Cycle:</b>	67%
<b>Control Features:</b>	-

### Related products



**NCP1010ST130T3**

IC OFFLINE SWIT SMPS CM SOT223

[ON Semiconductor](#)

RFQ



**NCP1010ST65T3**

IC OFFLINE SWIT SMPS CM SOT223

[ON Semiconductor](#)

RFQ



**NCP1011AP130**

IC OFFLINE SWIT SMPS CM OVP 7DIP

[ON Semiconductor](#)

RFQ



**NCP1011AP100G**

IC OFFLINE SWITCH SMPS OVP 7DIP

[ON Semiconductor](#)

RFQ

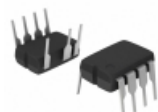


**NCP1010ST130T3G**

IC CTRLR/MOSFET 130KHZ SOT223

[ON Semiconductor](#)

RFQ



**NCP1011AP100**

IC OFFLINE SWIT SMPS CM OVP 7DIP

[ON Semiconductor](#)

RFQ



**NCP1011APL065R2G**

IC CTRLR/MOSFET 65KHZ 7DIPGW

[ON Semiconductor](#)

RFQ



**NCP1011AP130G**

IC OFFLINE SWIT SMPS CM OVP 7DIP

[ON Semiconductor](#)

RFQ



**NCP1011AP065**

IC OFFLINE SWIT SMPS CM OVP 7DIP

[ON Semiconductor](#)

RFQ



**NCP1010ST65T3G**

IC CTRLR/MOSFET 65KHZ SOT223

[ON Semiconductor](#)

RFQ

### Guess You May Looking For

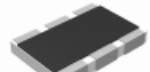


**RNCF0805BTC340R**

RES SMD 340 OHM 0.1% 1/8W 0805

[Stackpole Electronics Inc.](#)

RFQ



**RC1218FK-07453RL**

RES SMD 453 OHM 1W 1812 WIDE

[Yageo](#)

RFQ



**RNCF0603BTE442R**

RES SMD 442 OHM 0.1% 1/10W 0603

[Stackpole Electronics Inc.](#)

RFQ



**SMM02070C2260FBS00**

RES SMD 226 OHM 1% 1W MELF

[Vishay Beyschlag](#)

RFQ



**RG1005P-3322-B-T5**

RES SMD 33.2KOHM 0.1% 1/16W 0402

[Susumu](#)

RFQ



**RT0805BRE0724RL**

RES SMD 24 OHM 0.1% 1/8W 0805

[Yageo](#)

RFQ



**RT0805BRE0756RL**

RES SMD 56 OHM 0.1% 1/8W 0805

[Yageo](#)

RFQ

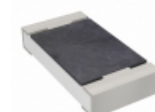


**CRCW1210732RFKEAHP**

RES SMD 732 OHM 1% 3/4W 1210

[Vishay Dale](#)

RFQ

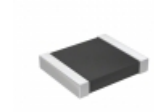


**RT1206CRE0711R8L**

RES SMD 11.8 OHM 0.25% 1/4W 1206

[Yageo](#)

RFQ



**RT1210DRD07261RL**

RES SMD 261 OHM 0.5% 1/4W 1210

[Yageo](#)

RFQ