

## MIC4811YMM



**Microchip Technology**

IC LED DRVR LIN DIM 50MA 10MSOP

Lead free / RoHS Compliant

Integrated Circuits (ICs)

[MIC4811YMM.pdf](#)

**Buy Now**

**Out Stock**

**0 pcs**

Minimum:1

Multiples:100

Manufacturer lead time 10 weeks

We can supply MIC4811YMM, use the request quote form to request MIC4811YMM price and lead time. Zeano is a professional electronic components distributor. With 3+ Million line items of available electronic components can ship in short lead-time, over 250 thousand part numbers of electronic components in stock for immediately delivery, which may include part number MIC4811YMM. The price and lead time for MIC4811YMM depending on the quantity required and warehouse location. Contact us and our sales representative will provide you price. We look forward to work with you.

### Shopping Process

**1**

**Confirm the product**

**2**

**submit the order**

**3**

**payment**

**4**

**wait for delivery**

**5**

**receive the goods**

### Specifications

<b>Voltage - Supply (Min):</b>	3V
<b>Voltage - Supply (Max):</b>	5.5V
<b>Voltage - Output:</b>	-
<b>Type:</b>	Linear
<b>Topology:</b>	-
<b>Supplier Device Package:</b>	10-MSOP
<b>Series:</b>	-
<b>Packaging:</b>	Tube
<b>Package / Case:</b>	10-TFSOP, 10-MSOP (0.118", 3.00mm Width)
<b>Operating Temperature:</b>	-40°C ~ 125°C (TJ)
<b>Number of Outputs:</b>	6
<b>Mounting Type:</b>	Surface Mount
<b>Internal Switch(s):</b>	Yes
<b>Frequency:</b>	-
<b>Dimming:</b>	PWM
<b>Current - Output / Channel:</b>	50mA
<b>Applications:</b>	Signage

### Related products

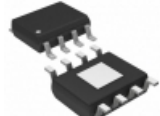


**MIC4807BN**

IC DRIVER 80V 8CH ADDRESS 18-DIP

[Microchip Technology](#)

**RFQ**



**MIC4802YME**

IC LED DRVR LIN DIM 800MA 8SOIC

[Microchip Technology](#)

**RFQ**



**MIC4812YMME-TR**

IC LED DRVR LIN DIM 100MA 10MSOP

[Microchip Technology](#)

**RFQ**



**MIC4811YMM-TR**

IC LED DRVR LIN DIM 50MA 10MSOP

[Microchip Technology](#)

**RFQ**



**MIC4801YM**

IC LED DRVR LIN DIM 600MA 8SOIC

[Microchip Technology](#)

**RFQ**



**MIC4826BMM TR**

[MICREL](#)

**RFQ**



**MIC4826BMM**

IC EL DRIVER 160VPP OUT 8-MSOP

[Microchip Technology](#)

**RFQ**



**MIC4801YM-TR**

IC LED DRVR LIN DIM 600MA 8SOIC

[Microchip Technology](#)

**RFQ**



**MIC4802YME-TR**

IC LED DRVR LIN DIM 800MA 8SOIC

[Microchip Technology](#)

**RFQ**



**MIC4812YMME**

IC LED DRVR LIN DIM 100MA 10MSOP

[Microchip Technology](#)

**RFQ**

### Guess You May Looking For

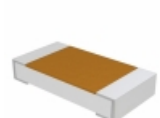


**HRG3216P-5231-D-T1**

RES SMD 5.23K OHM 0.5% 1W 1206

[Susumu](#)

**RFQ**

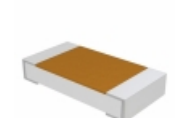


**TNPW12061K18BEEN**

RES SMD 1.18K OHM 0.1% 1/4W 1206

[Vishay Dale](#)

**RFQ**

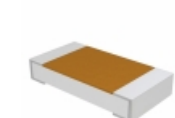


**TNPW12064K64BEEN**

RES SMD 4.64K OHM 0.1% 1/4W 1206

[Vishay Dale](#)

**RFQ**



**TNPW1206332KBEEN**

RES SMD 332K OHM 0.1% 1/4W 1206

[Vishay Dale](#)

**RFQ**



**RG2012N-1240-W-T1**

RES SMD 124 OHM 0.05% 1/8W 0805

[Susumu](#)

**RFQ**

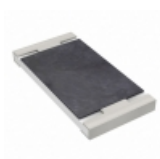


**RG2012N-3401-W-T1**

RES SMD 3.4K OHM 0.05% 1/8W 0805

[Susumu](#)

**RFQ**

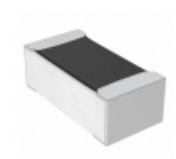


**RT2512CKB07560RL**

RES SMD 560 OHM 0.25% 3/4W 2512

[Yageo](#)

**RFQ**



**RN73C1E162RBDF**

RES SMD 162 OHM 0.1% 1/16W 0402

[TE Connectivity Passive Product](#)

**RFQ**



**RG1005N-333-W-T1**

RES SMD 33K OHM 0.05% 1/16W 0402

[Susumu](#)

**RFQ**



**RG2012V-1690-D-T5**

RES SMD 169 OHM 0.5% 1/8W 0805

[Susumu](#)

**RFQ**

