

IS42S32800B-6TLI

ISSI (Integrated Silicon Solution, Inc.)

IC SDRAM 256MBIT 166MHZ 86TSOP

Lead free / RoHS Compliant

Integrated Circuits (ICs)

[1.IS42S32800B-6TLI.pdf](#)
[2.IS42S32800B-6TLI.pdf](#)

We can supply ISSI (Integrated Silicon Solution, Inc.) IS42S32800B-6TLI, use the request quote form to request IS42S32800B-6TLI price, ISSI (Integrated Silicon Solution, Inc.) Datasheet PDF and lead time. Zeano.com is a professional electronic components distributor. With 3+ Million line items of available electronic components can ship in short lead-time, over 250 thousand part numbers of electronic components in stock for immediately delivery, which may include part number IS42S32800B-6TLI. The price and lead time for IS42S32800B-6TLI depending on the quantity required, availability and warehouse location.

Shopping Process

1

Confirm the product

2

submit the order

3

payment

4

wait for delivery

5

receive the goods

Specifications

Voltage - Supply:	3 V ~ 3.6 V
Supplier Device Package:	86-TSOP II
Speed:	166MHz
Series:	-
Packaging:	Tray
Package / Case:	86-TFSOP (0.400", 10.16mm Width)
Operating Temperature:	-40°C ~ 85°C (TA)
Memory Type:	Volatile
Memory Size:	256Mb (8M x 32)
Memory Format:	DRAM
Interface:	Parallel

Related products


IS42S32800B-6TL

 IC SDRAM 256MBIT 166MHZ 86TSOP
[ISSI, Integrated Silicon Solution Inc](#)

RFQ


IS42S32800B-7BI

 IC SDRAM 256MBIT 143MHZ 90BGA
[ISSI, Integrated Silicon Solution Inc](#)

RFQ


IS42S32800B-7B

 IC SDRAM 256MBIT 143MHZ 90BGA
[ISSI, Integrated Silicon Solution Inc](#)

RFQ


IS42S32800B-6TI

 in stock
[ISSI](#)

RFQ


IS42S32800B-6TL-TR

 IC SDRAM 256MBIT 166MHZ 86TSOP
[ISSI, Integrated Silicon Solution Inc](#)

RFQ


IS42S32800B-6TLI-TR

 IC SDRAM 256MBIT 166MHZ 86TSOP
[ISSI, Integrated Silicon Solution Inc](#)

RFQ


IS42S32800B-6T

 IC SDRAM 256MBIT 166MHZ 86TSOP
[ISSI, Integrated Silicon Solution Inc](#)

RFQ


IS42S32800B-6T-TR

 IC SDRAM 256MBIT 166MHZ 86TSOP
[ISSI, Integrated Silicon Solution Inc](#)

RFQ


IS42S32800B-7B-TR

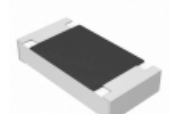
 IC SDRAM 256MBIT 143MHZ 90BGA
[ISSI, Integrated Silicon Solution Inc](#)

RFQ


IS42S32800B-7BA1
[ISSI](#)

RFQ

Guess You May Looking For


ERJ-8ENF3743V

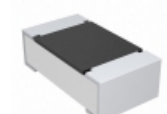
 RES SMD 374K OHM 1% 1/4W 1206
[Panasonic Electronic Components](#)

RFQ


ERJ-PB3B1621V

 RES SMD 1.62K OHM 0.1% 1/5W 0603
[Panasonic Electronic Components](#)

RFQ


CRCW06038R25FNEB

 RES SMD 8.25 OHM 1% 1/10W 0603
[Vishay Dale](#)

RFQ


RT0805FRD0715K4L

 RES SMD 15.4K OHM 1% 1/8W 0805
[Yageo](#)

RFQ


KTR18EZPJ331

 RES SMD 330 OHM 5% 1/4W 1206
[Rohm Semiconductor](#)

RFQ


ERJ-S08F3401V

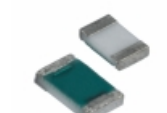
 RES SMD 3.4K OHM 1% 1/4W 1206
[Panasonic Electronic Components](#)

RFQ


RT0805BRD07221RL

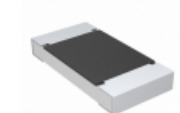
 RES SMD 221 OHM 0.1% 1/8W 0805
[Yageo](#)

RFQ


RL1220T-R013-J

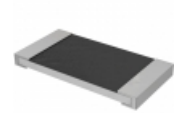
 RES SMD 0.013 OHM 5% 1/4W 0805
[Susumu](#)

RFQ


CRCW20107R68FNEF

 RES SMD 7.68 OHM 1% 3/4W 2010
[Vishay Dale](#)

RFQ


RMCF2512FT90R9

 RES SMD 90.9 OHM 1% 1W 2512
[Stackpole Electronics Inc.](#)

RFQ